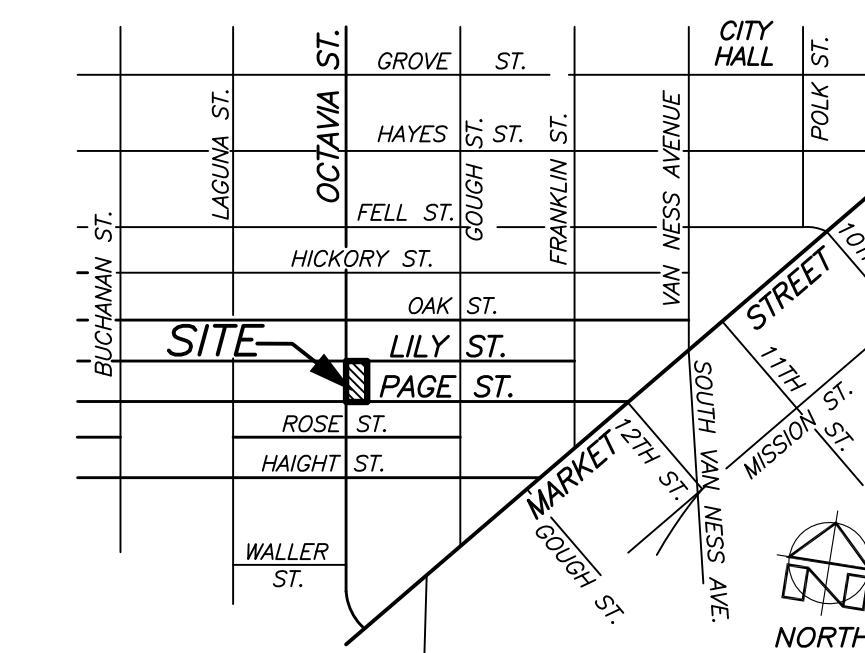


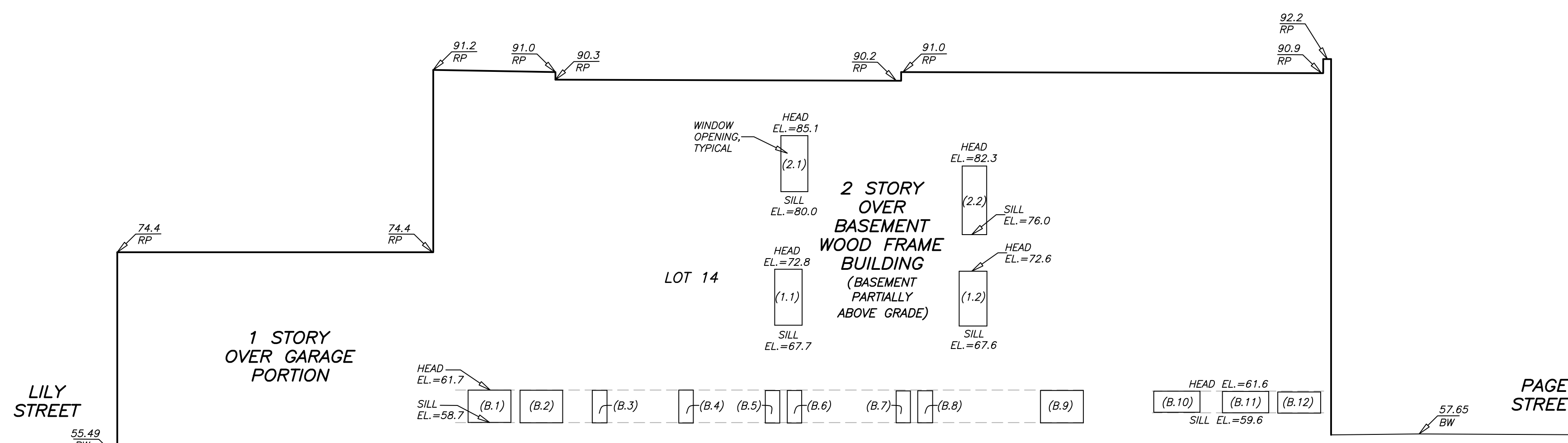
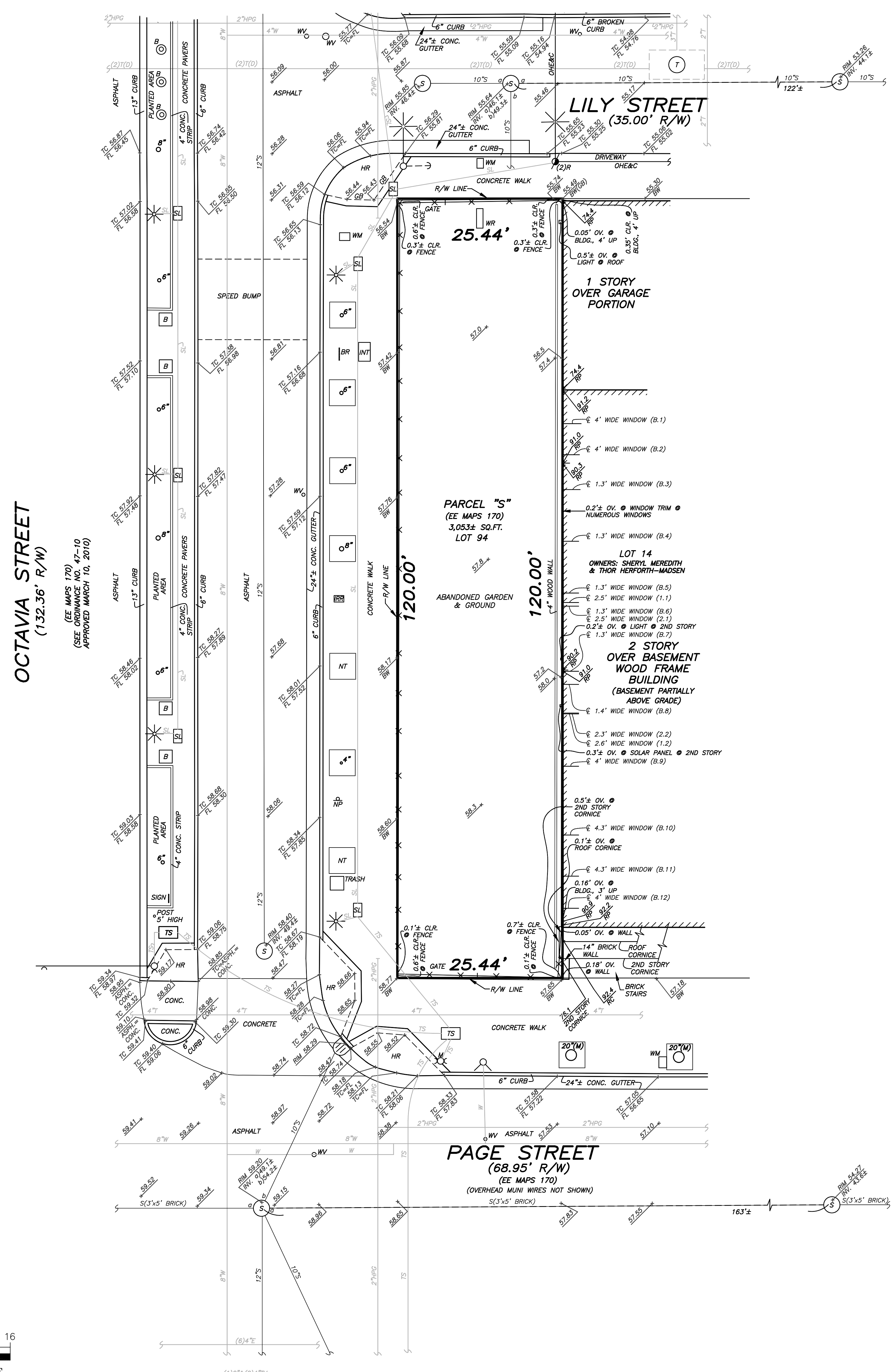


LEGEND

- CLR. CLEAR OF PROPERTY LINE
- OV. OVER PROPERTY LINE
- BLDG. BUILDING
- CONC. CONCRETE
- ASPH. ASPHALT
- HR HANDICAP RAMP
- R/W RIGHT OF WAY
- TC TOP OF CURB
- FL FLOW LINE
- BW BACK OF WALK
- GB GRADE BREAK
- RP ROOF PARAPET
- RC ROOF CORNICE
- EL. ELEVATION
- TREE TREE
- 6" TREE PIT W/TREE
- NT TREE PIT (NO TREE)
- WM WATER METER
- TS TRAFFIC SIGNAL PULLBOX
- M/GP M/GP & TRAFFIC SIGNAL
- SLP STREET LIGHT PULLBOX
- ELECTROLIER ELECTROLIER
- IRRIGATION COVER IRRIGATION COVER
- BOLLARD 3.5" HIGH OV CONCRETE BASE BOLLARD, 3.5" HIGH OV CONCRETE BASE
- CATCH BASIN CATCH BASIN
- FIRE HYDRANT FIRE HYDRANT
- NO PARKING SIGN NO PARKING SIGN
- INTERCONNECTION PULLBOX INTERCONNECTION PULLBOX
- BIKE RACK BIKE RACK
- BENCH, 1.5' HIGH BENCH, 1.5' HIGH
- TRASH TRASH CAN
- GUY WIRE ANCHOR GUY WIRE ANCHOR
- JOINT POLE & ELECTROLIER JOINT POLE & ELECTROLIER
- ELECTROLIER ELECTROLIER
- TRAFFIC SIGNAL TRAFFIC SIGNAL
- WATER VALVE WATER VALVE
- SEWER MANHOLE SEWER MANHOLE
- TELEPHONE MANHOLE TELEPHONE MANHOLE
- WATER RISER BOX WATER RISER BOX
- TREE PIT W/METAL FENCE TREE PIT W/METAL FENCE
- OVERHEAD ELECTRIC & COMMUNICATION WIRES OVERHEAD ELECTRIC & COMMUNICATION WIRES
- E ELECTRIC LINE
- HPG HIGH PRESSURE GAS LINE
- S SEWER LINE
- SL STREET LIGHT LINE
- T TELEPHONE LINE
- TS TRAFFIC SIGNAL LINE
- W WATER LINE
- (D) DUCT



VICINITY MAP
NO SCALE



ELEVATION VIEW
(EAST PROPERTY LINE LOOKING EAST)
(BUILDING APPURTENANCES ALONG PAGE STREET AND LILY STREET BUILDING FRONTAGES NOT SHOWN)

OCTAVIA STREET
(132.36' R/W)
(SEE MAPS 170)
(SEE ORDINANCE NO. 47-10
APPROVED MARCH 10, 2010)

PAGE STREET
(68.95' R/W)
(SEE MAPS 170)
(OVERHEAD MUNI WIRES NOT SHOWN)

GENERAL NOTES

- ELEVATIONS ARE ON SAN FRANCISCO CITY DATUM.
- DETAILS NEAR PROPERTY LINES MAY NOT BE TO SCALE.
- ALL PROPERTY LINE ANGLES ARE 90 DEGREES UNLESS NOTED OTHERWISE.
- DIMENSIONS ARE IN FEET AND DECIMALS THEREOF.

BASIS OF SURVEY

- CITY OF SAN FRANCISCO MONUMENT MAP NO. 26 ON FILE IN THE OFFICE OF THE CITY AND COUNTY SURVEYOR.
- FINAL MAP NO. 7639A FILED MAY 9, 2014 IN BOOK EE OF SURVEY MAPS, PAGES 170-176, OFFICIAL RECORDS OF THE CITY AND COUNTY OF SAN FRANCISCO.

UTILITY NOTE

THE UTILITIES EXISTING ON THE SURFACE AND SHOWN ON THIS DRAWING HAVE BEEN LOCATED BY FIELD SURVEY. ALL UNDERGROUND UTILITIES SHOWN ON THIS DRAWING ARE FROM RECORDS OF THE VARIOUS UTILITY COMPANIES AND THE SURVEYOR DOES NOT ASSUME RESPONSIBILITY FOR THEIR COMPLETENESS, INDICATED LOCATION OR SIZE. RECORD UTILITY LOCATION SHOULD BE CONFIRMED BY EXPOSING THE UTILITY. DUE TO THE PROLIFERATION OF TELECOMMUNICATION COMPANIES, NOT ALL UNDERGROUND RECORDS ARE AVAILABLE. THEREFORE, THERE MAY BE TELECOMMUNICATION LINES NOT SHOWN HEREON.

PRELIMINARY

12-16-14
(TITLE REPORT NOT PROVIDED)

ALTA/ACSM LAND TITLE SURVEY AND SITE SURVEY
OF A PORTION OF ASSESSOR'S BLOCK NO. 838
FOR
BUILD ACQUISITION, LLC

SAN FRANCISCO CALIFORNIA

SCALE: 1" = 8'	MARTIN M. RON ASSOCIATES LAND SURVEYORS 859 HARRISON STREET, SUITE 200 SAN FRANCISCO, CA 94107 (415) 543-4500	SURV: RS
DATE: 7/14		DES: JES
SHEET: 1		DRW: JP
DF: 1		CHK: BR
JOB NO. S-8773		REV. NO.

