



Image Details (/media/165405)



## Wetlands Mapper

The Wetlands mapper is designed to deliver easy-to-use, map like views of America's Wetland resources. It integrates digital map data along with other resource information to produce current information on the status, extent, characteristics and functions of wetlands, riparian, and deepwater habitats. The Wetland Mapper fulfills the U.S. Fish and Wildlife Service's strategic plan for the development, revision and dissemination of wetlands data and information to resource managers and the public. This information is intended to promote the understanding and conservation of wetland resources through discovery and education as well as to aid in resource management, research and decision making.

The wetlands displayed on the Wetlands Mapper show wetland type and extent using a biological definition of wetlands. There is no attempt to define the limits of proprietary jurisdiction of any federal, state, or local government, or to establish the geographical scope of the regulatory programs of government agencies.

## Getting Started

Please read the Disclaimer (/node/268028), Data Limitations, Exclusions and Precautions (/node/264582), and the Wetlands Geodatabase User Caution (/node/264583).

## Documentation and Instructions

Refer to the following links for documentation and instructions:

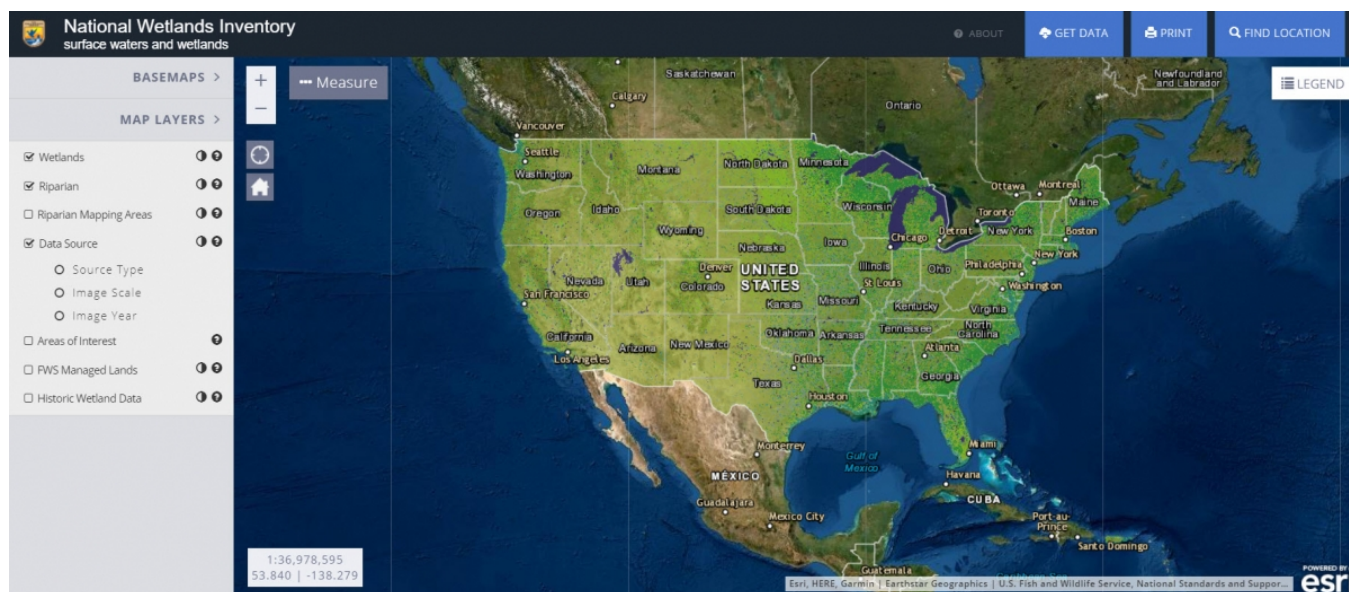
 Wetlands Mapper Documentation and Instructions Manual (/media/156363)

**VIDEO:** How to find and use the U.S Fish and Wildlife Service's Wetlands Mapper ([https://www.youtube.com/watch?feature=player\\_detailpage&v=UElpQelOZ8I](https://www.youtube.com/watch?feature=player_detailpage&v=UElpQelOZ8I))

## Launch the Wetlands Mapper

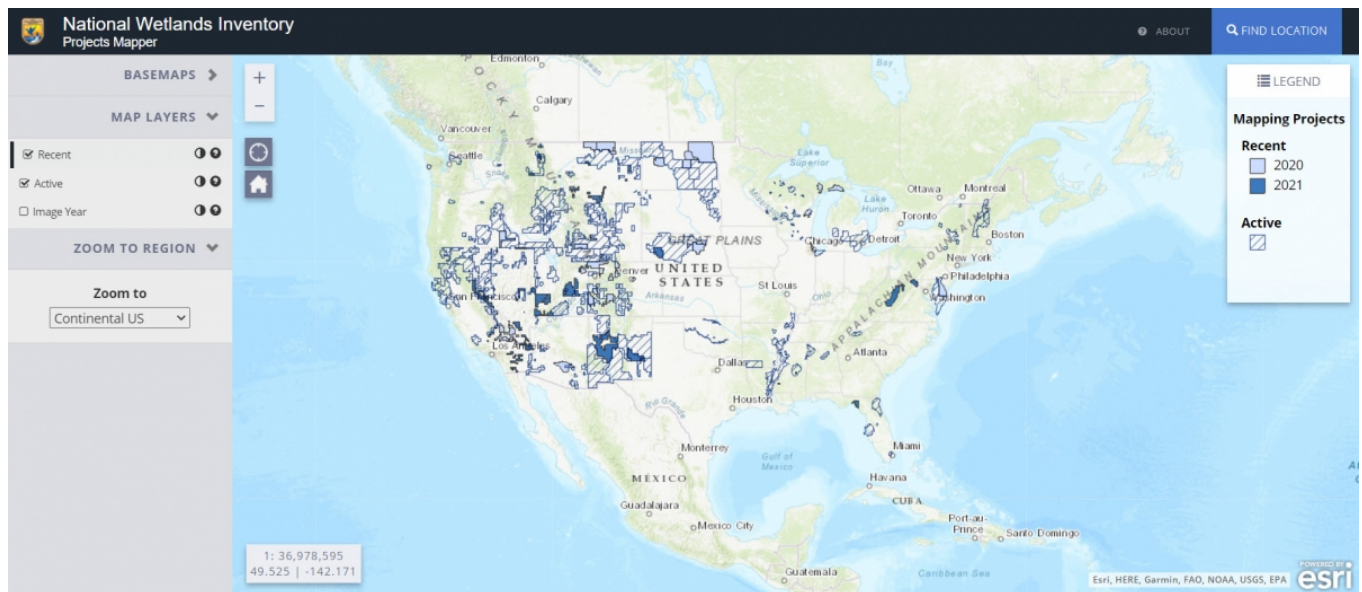
Open either mapper by **clicking on the links below** (best viewed by maximizing your browser window):

Wetlands Mapper (<https://fwsprimary.wim.usgs.gov/wetlands/apps/wetlands-mapper/>)



| Image Details (/media/nwi-mapper)

Projects Mapper (<https://fwsprimary.wim.usgs.gov/wetland-projects-v2/>)



| Image Details (/media/wetlands-project-mapper)



*Working with others to conserve, protect and enhance fish, wildlife, plants and their habitats for the continuing benefit of the American people.*

---

## CAREERS & INTERNSHIPS (/CAREERS)

---

**Employees at FWS (/about/staff)**

**Contact Us (/contact-us)**

**Site Map (/sitemap)**

---

**Accessibility (/help/accessibility.html)**

**Freedom of Information Act (/program/fws-freedom-information-act-foia)**

**Notices (/notices)**

**Privacy Policy (https://www.doi.gov/privacy)**



**Disclaimers (/disclaimer)**

**Information Quality (/program/information-quality)**

**Vulnerability Disclosure Policy (/vulnerability-disclosure-policy)**

---

**DOI (<https://www.doi.gov>)**

**USA.GOV (<https://www.usa.gov>)**

**f** (<https://www.facebook.com/usfws>)      **ig** (<https://www.instagram.com/usfws>)

**t** (<https://www.twitter.com/usfws>)

**in** (<https://www.linkedin.com/company/usfws>)

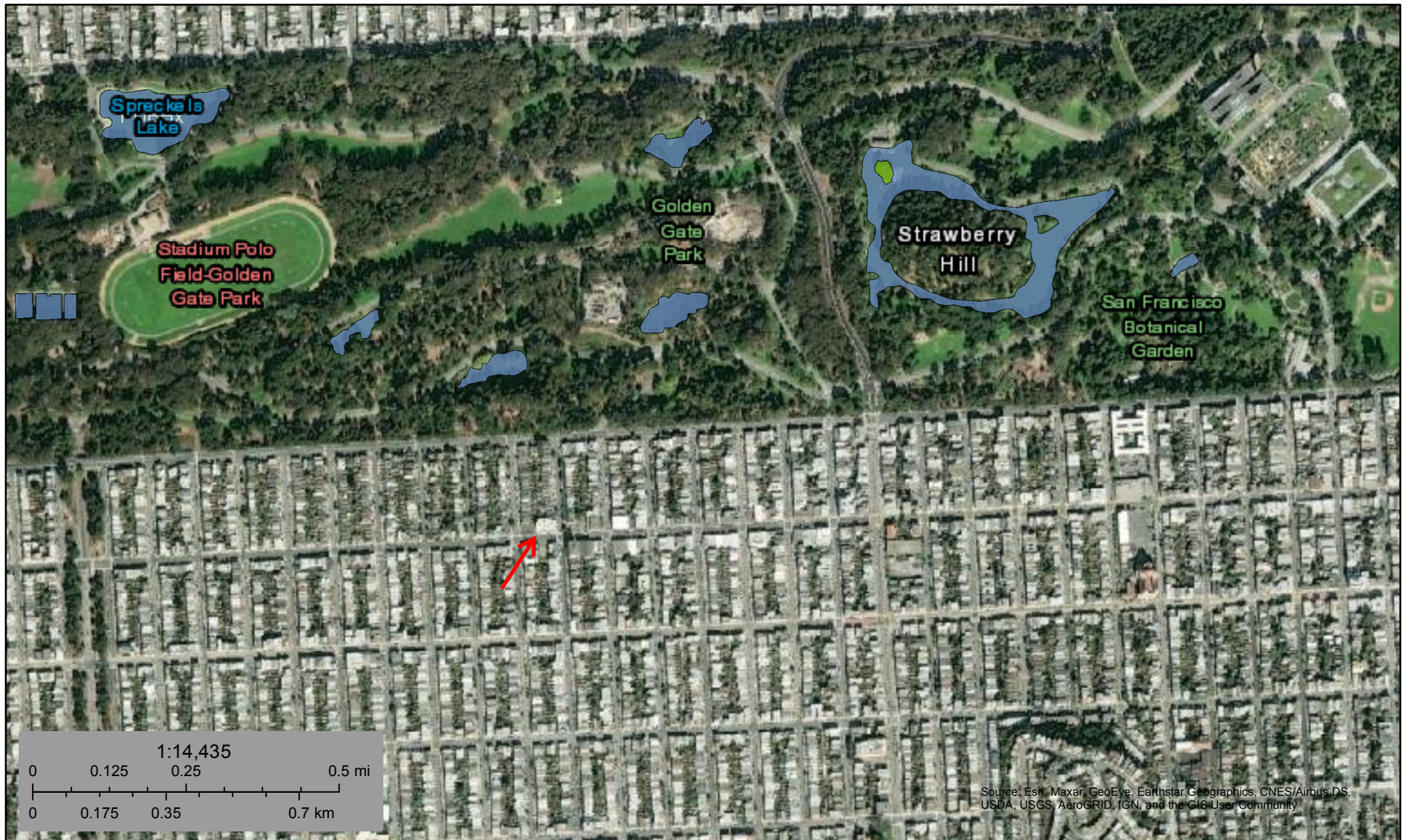
**o** (<https://www.flickr.com/photos/usfwshq>)      **YouTube** (<https://www.youtube.com/usfws>)



U.S. Fish and Wildlife Service




# National Wetlands Inventory

## 31-Irving Wetlands



September 9, 2021

### Wetlands

	Estuarine and Marine Deepwater		Freshwater Emergent Wetland		Lake
	Estuarine and Marine Wetland		Freshwater Forested/Shrub Wetland		Other
			Freshwater Pond		Riverine

This map is for general reference only. The US Fish and Wildlife Service is not responsible for the accuracy or currentness of the base data shown on this map. All wetlands related data should be used in accordance with the layer metadata found on the Wetlands Mapper web site.