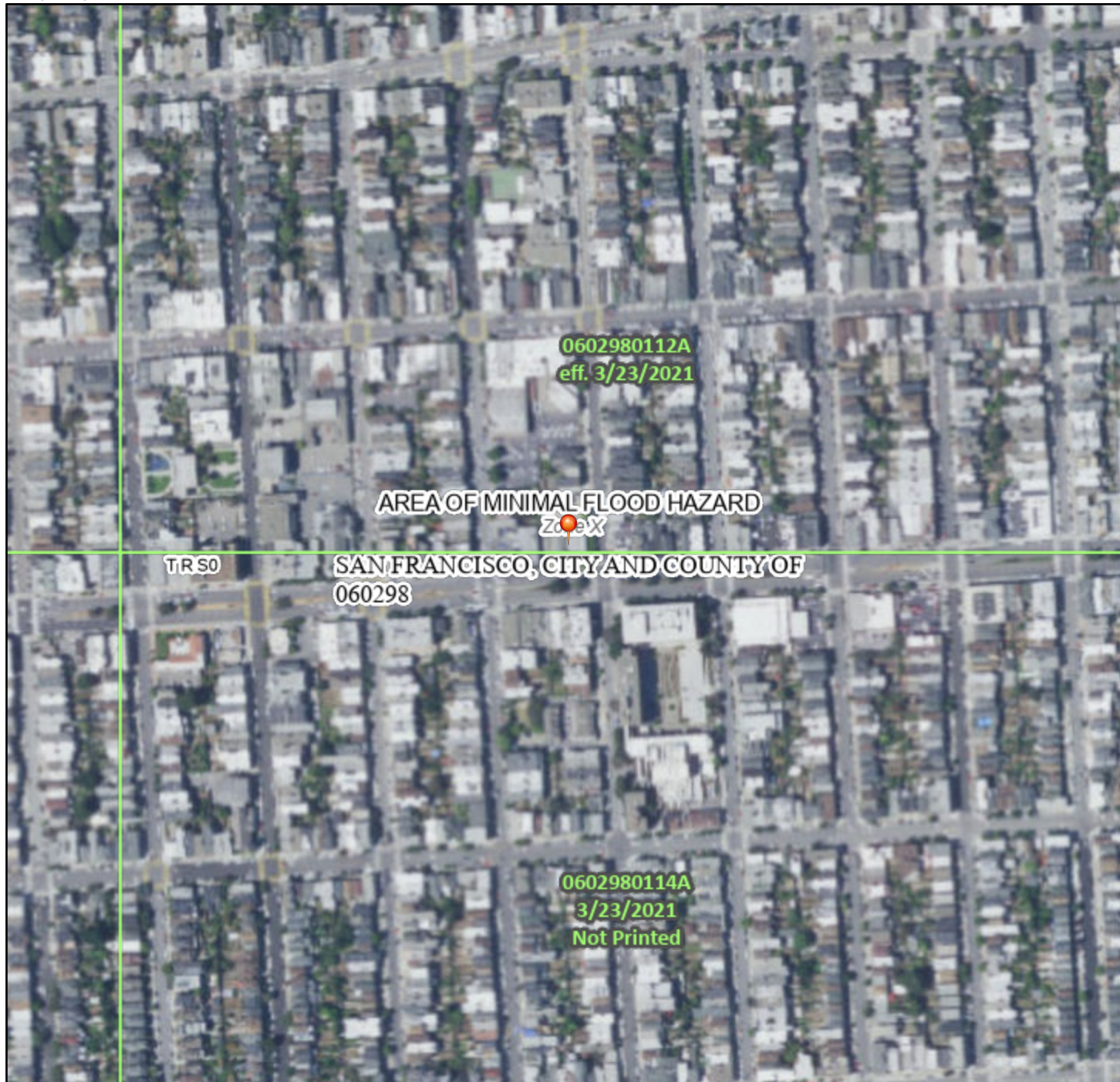


National Flood Hazard Layer FIRMMette



122°28'11"W 37°47'7"N



0 250 500 1,000 1,500 2,000 Feet 1:6,000

122°27'34"W 37°46'39"N

Basemap: USGS National Map: Orthoimagery: Data refreshed October, 2020

Legend

SEE FIS REPORT FOR DETAILED LEGEND AND INDEX MAP FOR FIRM PANEL LAYOUT

SPECIAL FLOOD HAZARD AREAS		Without Base Flood Elevation (BFE) Zone A, V, A99
		With BFE or Depth Zone AE, AO, AH, VE, AR
		Regulatory Floodway
OTHER AREAS OF FLOOD HAZARD		0.2% Annual Chance Flood Hazard, Areas of 1% annual chance flood with average depth less than one foot or with drainage areas of less than one square mile Zone X
		Future Conditions 1% Annual Chance Flood Hazard Zone X
		Area with Reduced Flood Risk due to Levee. See Notes. Zone X
		Area with Flood Risk due to Levee Zone D
OTHER AREAS		NO SCREEN Area of Minimal Flood Hazard Zone X
		Effective LOMRs
GENERAL STRUCTURES		Area of Undetermined Flood Hazard Zone D
		Channel, Culvert, or Storm Sewer
		Levee, Dike, or Floodwall
OTHER FEATURES		Cross Sections with 1% Annual Chance Water Surface Elevation
		Coastal Transect
		Base Flood Elevation Line (BFE)
		Limit of Study
		Jurisdiction Boundary
		Coastal Transect Baseline
		Profile Baseline
MAP PANELS		Digital Data Available
		No Digital Data Available
		Unmapped



The pin displayed on the map is an approximate point selected by the user and does not represent an authoritative property location.

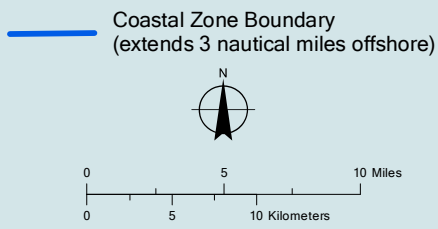
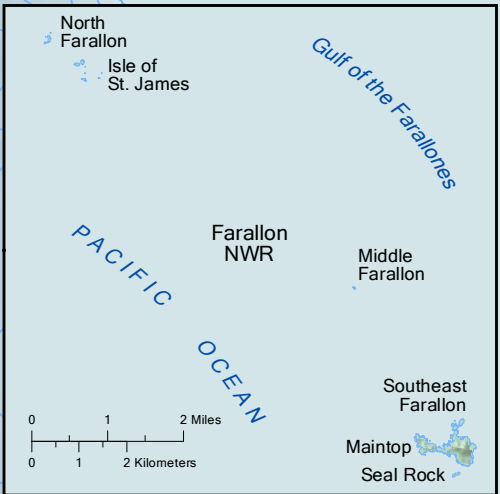
This map complies with FEMA's standards for the use of digital flood maps if it is not void as described below. The basemap shown complies with FEMA's basemap accuracy standards

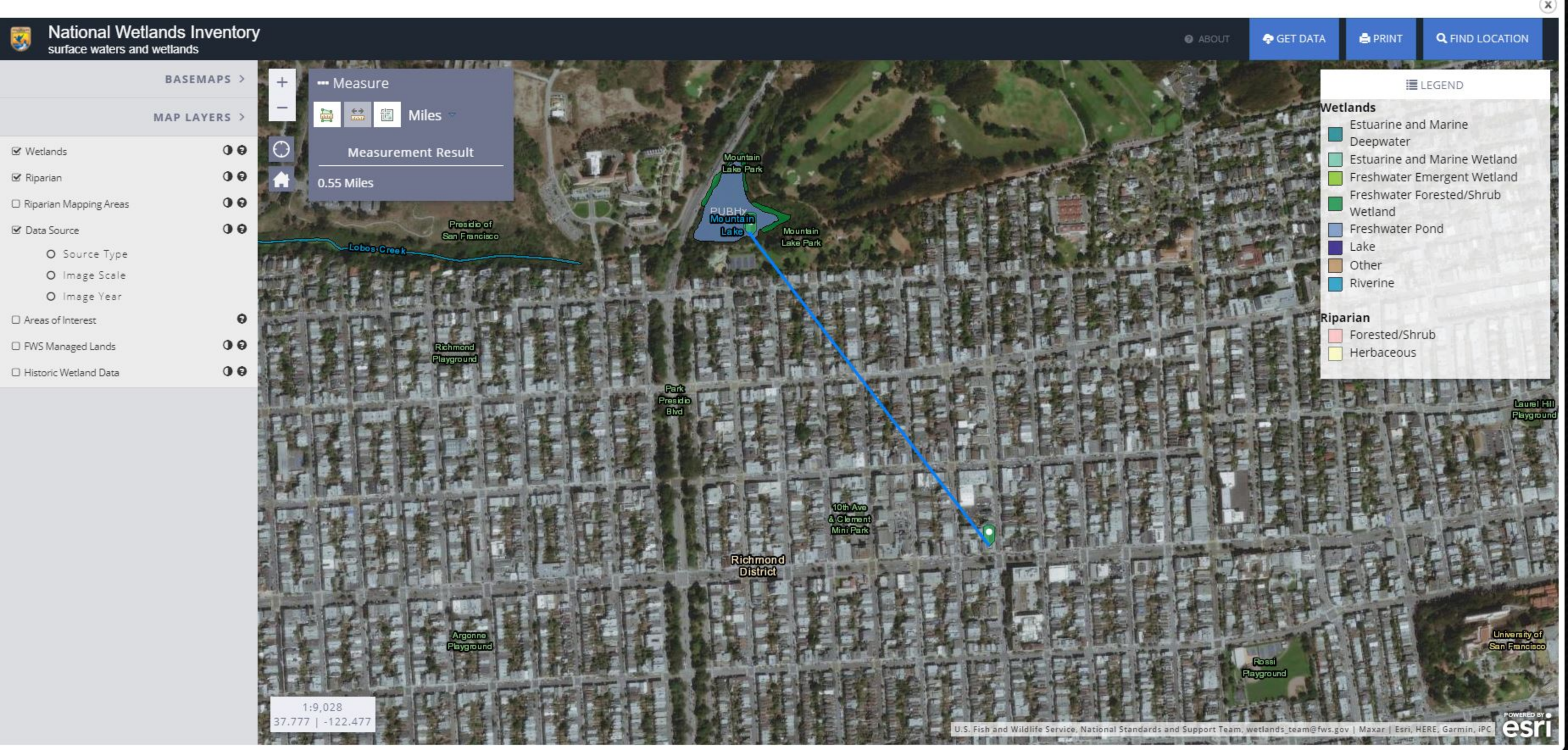
The flood hazard information is derived directly from the authoritative NFHL web services provided by FEMA. This map was exported on 6/28/2021 at 4:47 PM and does not reflect changes or amendments subsequent to this date and time. The NFHL and effective information may change or become superseded by new data over time.

This map image is void if the one or more of the following map elements do not appear: basemap imagery, flood zone labels, legend, scale bar, map creation date, community identifiers, FIRM panel number, and FIRM effective date. Map images for unmapped and unmodernized areas cannot be used for regulatory purposes.



Farallon Islands (S.F. Co.)
See Inset Below









NATIONAL WILD AND SCENIC RIVERS SYSTEM

[NATIONAL SYSTEM](#)[MANAGEMENT](#)[RESOURCES](#)[PUBLICATIONS](#)[CONTACT US](#)[50 YEARS](#)[SITE INDEX](#)

AMERICAN RIVER (LOWER), CALIFORNIA

[+ View larger map](#)

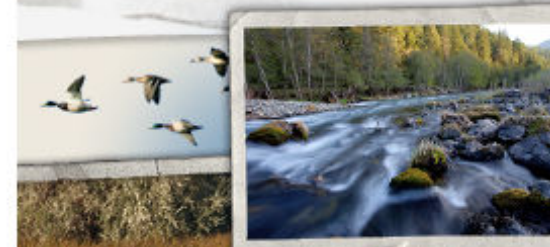
Managing Agency:

California Resources Agency

EXPLORE DESIGNATED RIVERS

 Choose A State Choose A River

*While progress should never come to a halt,
there are many places it should never come to
at all. — Paul Newman*



[Home \(/\)](#) > [Programs \(/programs/\)](#) > [Environmental Review \(/programs/environmental-review/\)](#) > ASD Calculator

Acceptable Separation Distance (ASD) Electronic Assessment Tool

The Environmental Planning Division (EPD) has developed an electronic-based assessment tool that calculates the Acceptable Separation Distance (ASD) from stationary hazards. The ASD is the distance from above ground stationary containerized hazards of an explosive or fire prone nature, to where a HUD assisted project can be located. The ASD is consistent with the Department's standards of blast overpressure (0.5 psi-buildings) and thermal radiation (450 BTU/ft² - hr - people and 10,000 BTU/ft² - hr - buildings). Calculation of the ASD is the first step to assess site suitability for proposed HUD-assisted projects near stationary hazards. Additional guidance on ASDs is available in the Department's guidebook "Siting of HUD- Assisted Projects Near Hazardous Facilities" and the regulation 24 CFR Part 51, Subpart C, Siting of HUD-Assisted Projects Near Hazardous Operations Handling Conventional Fuels or Chemicals of an Explosive or Flammable Nature.

Note: Tool tips, containing field specific information, have been added in this tool and may be accessed by hovering over the ASD result fields with the mouse.

Acceptable Separation Distance Assessment Tool

Is the container above ground?	Yes: <input checked="" type="checkbox"/> No: <input type="checkbox"/>
Is the container under pressure?	Yes: <input checked="" type="checkbox"/> No: <input type="checkbox"/>
Does the container hold a cryogenic liquified gas?	Yes: <input type="checkbox"/> No: <input checked="" type="checkbox"/>
Is the container diked?	Yes: <input type="checkbox"/> No: <input type="checkbox"/>
What is the volume (gal) of the container?	<input type="text" value="900"/>
What is the Diked Area Length (ft)?	<input type="text"/>
What is the Diked Area Width (ft)?	<input type="text"/>

<div>Calculate Acceptable Separation Distance</div>	
Diked Area (sqft)	
ASD for Blast Over Pressure (ASDBOP)	211.53
ASD for Thermal Radiation for People (ASDPPU)	264.69
ASD for Thermal Radiation for Buildings (ASDBPU)	47.89
ASD for Thermal Radiation for People (ASDPNPD)	
ASD for Thermal Radiation for Buildings (ASDBNPD)	

For mitigation options, please click on the following link: [Mitigation Options \(/resource/3846/acceptable-separation-distance-asd-hazard-mitigation-options/\)](/resource/3846/acceptable-separation-distance-asd-hazard-mitigation-options/)

Providing Feedback & Corrections

After using the ASD Assessment Tool following the directions in this User Guide, users are encouraged to provide feedback on how the ASD Assessment Tool may be improved. Users are also encouraged to send comments or corrections for the improvement of the tool.

Please send comments or other input using the **Contact Us** (<https://www.hudexchange.info/contact-us/>) form.

Related Information

- [ASD User Guide \(/resource/3839/acceptable-separation-distance-asd-assessment-tool-user-guide/\)](/resource/3839/acceptable-separation-distance-asd-assessment-tool-user-guide/)
- [ASD Flow Chart \(/resource/3840/acceptable-separation-distance-asd-flowchart/\)](/resource/3840/acceptable-separation-distance-asd-flowchart/)

