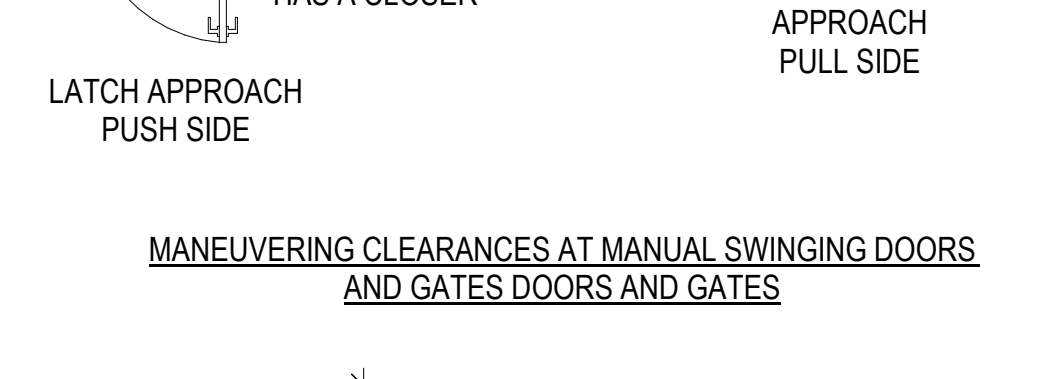
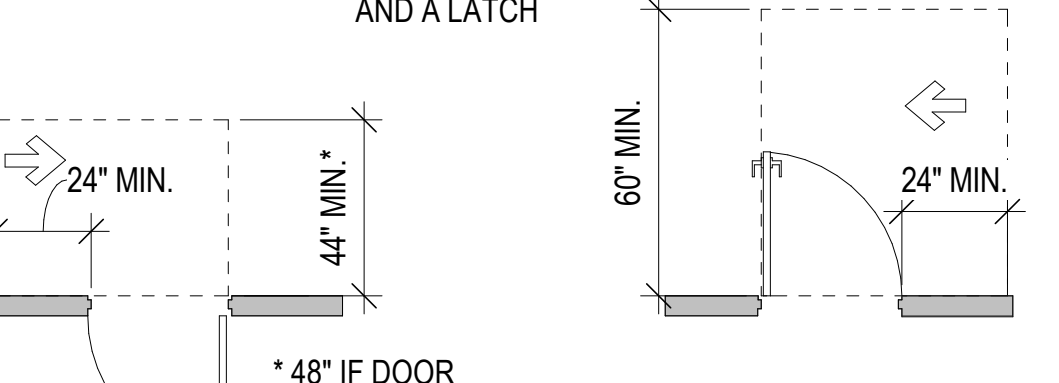
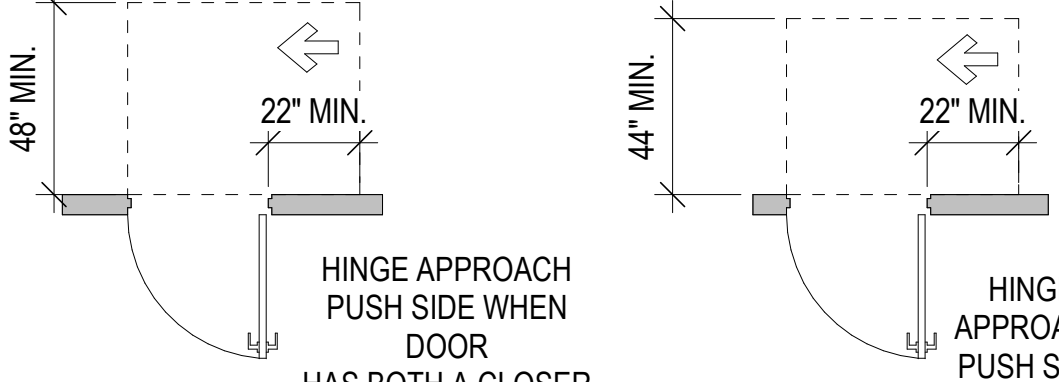
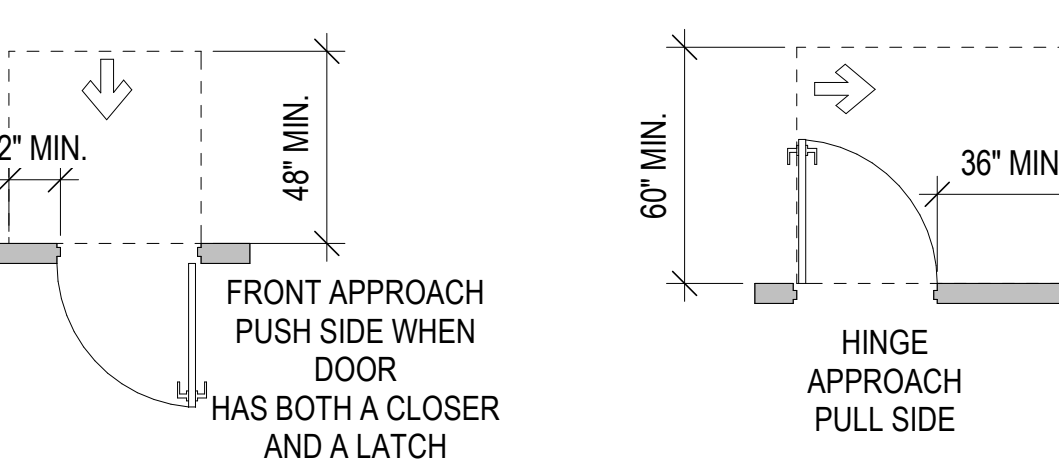
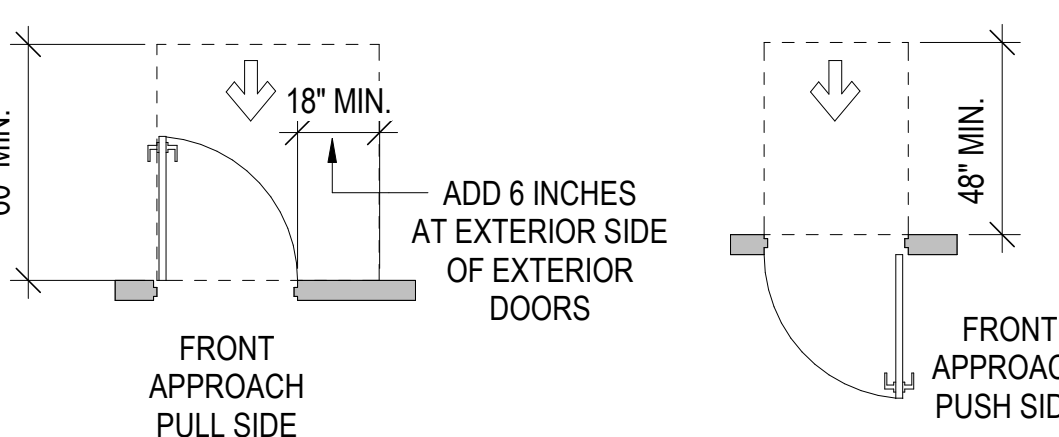
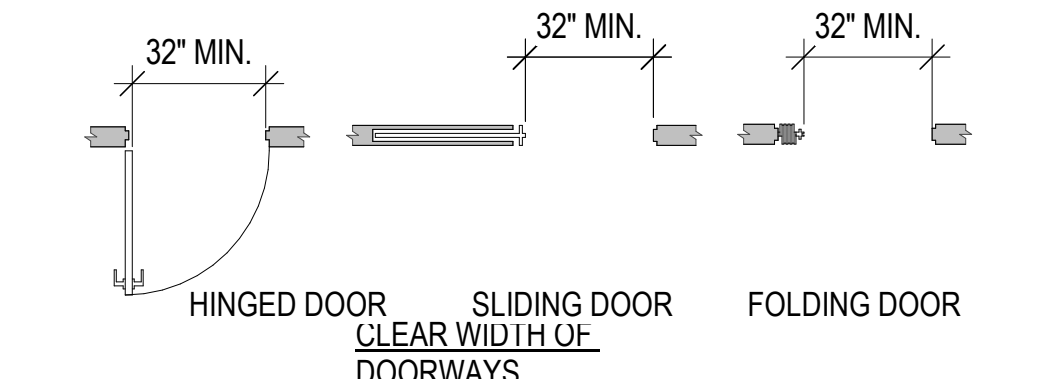
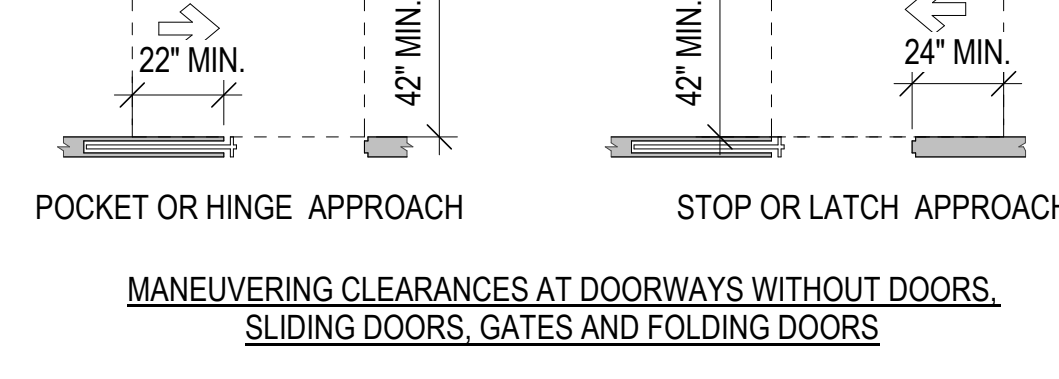
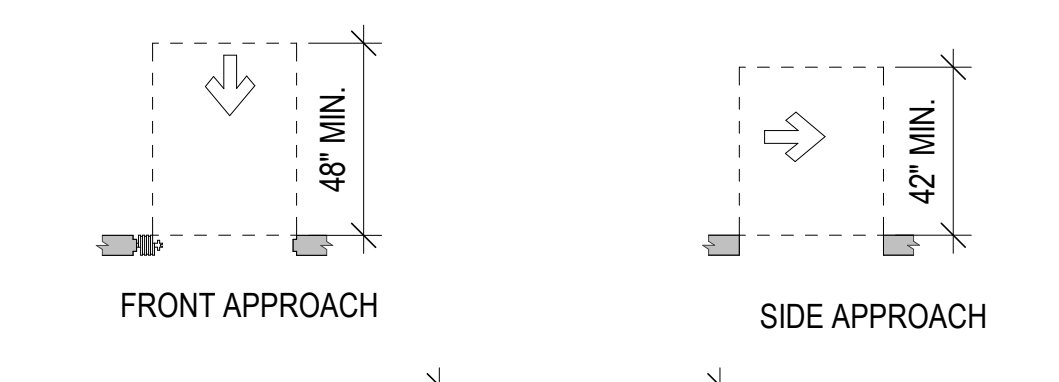


DOORS CONTD (11B-404) (11A-88 THRU 11A-8H)

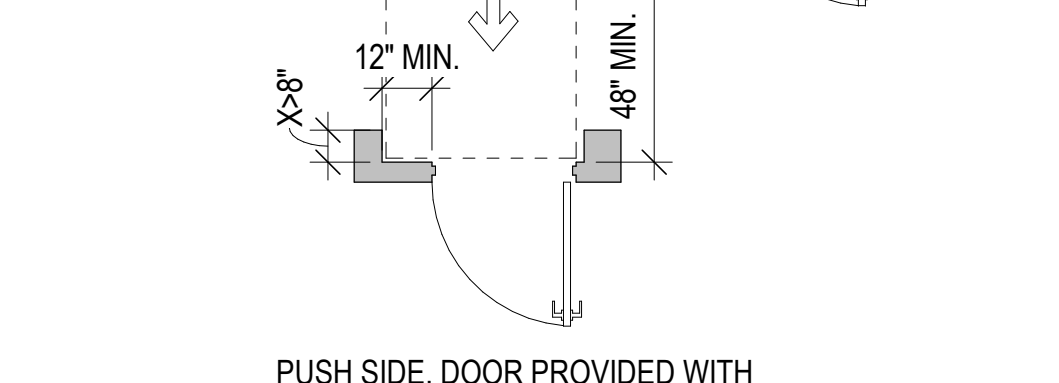
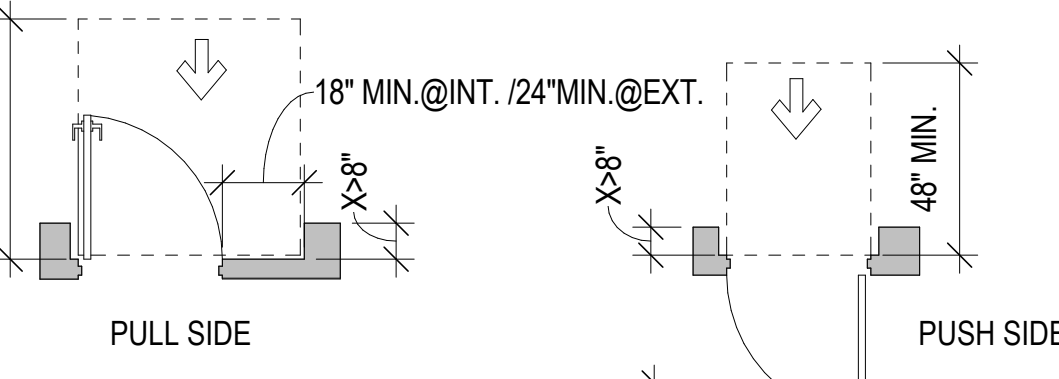
DOOR OPENINGS SHALL PROVIDE A CLEAR WIDTH OF 32 INCHES MINIMUM. CLEAR OPENINGS OF DOORWAYS WITH SWINGING DOORS SHALL BE MEASURED BETWEEN THE FACE OF THE DOOR AND THE STOP, WITH THE DOOR OPEN 90 DEGREES.



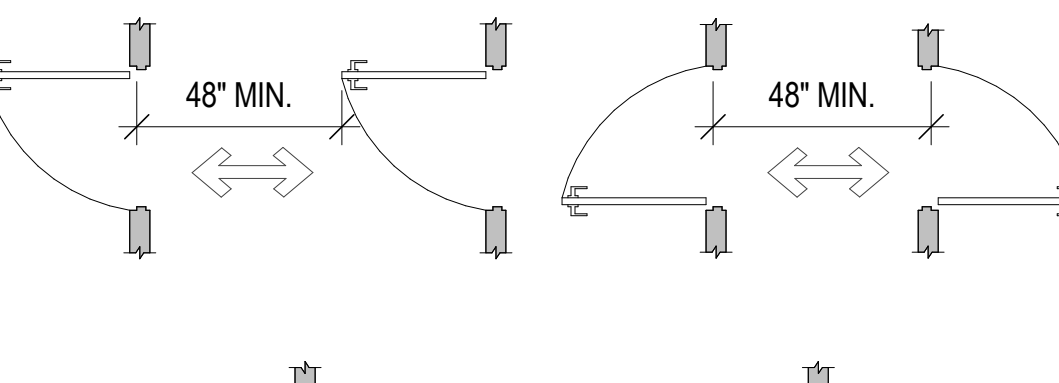
MANEUVERING CLEARANCES AT MANUAL SWINGING DOORS AND GATES, DOORS AND GATES



MANEUVERING CLEARANCES AT DOORWAYS WITHOUT DOORS, SLIDING DOORS, GATES AND FOLDING DOORS



MANEUVERING CLEARANCES AT RECESSED DOORS AND GATES

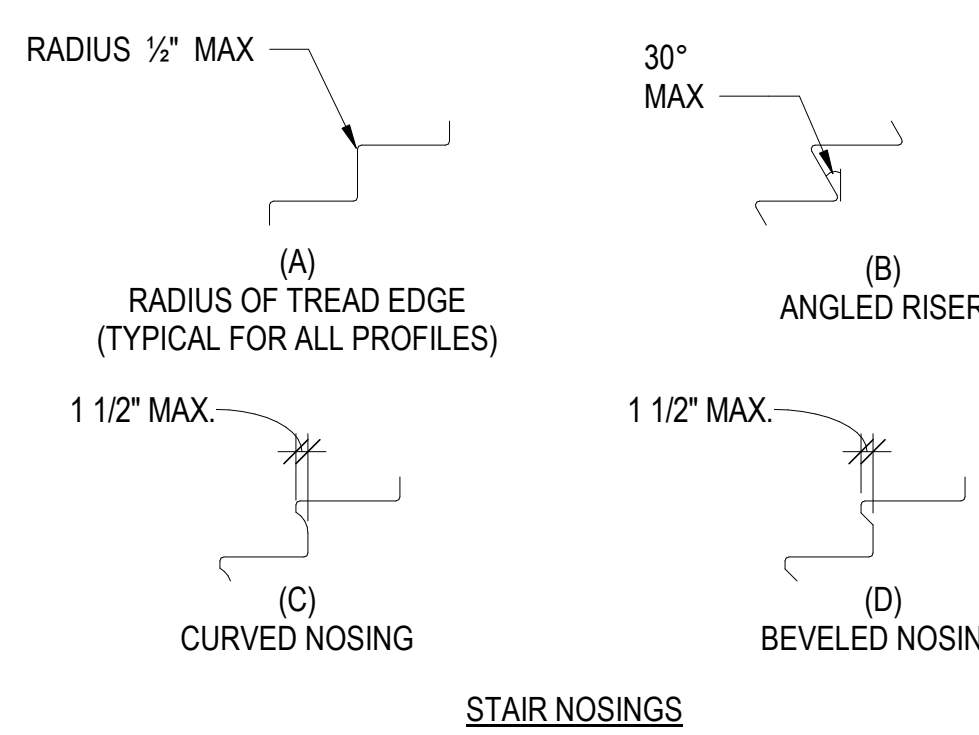


DOORS IN SERIES AND GATES IN SERIES



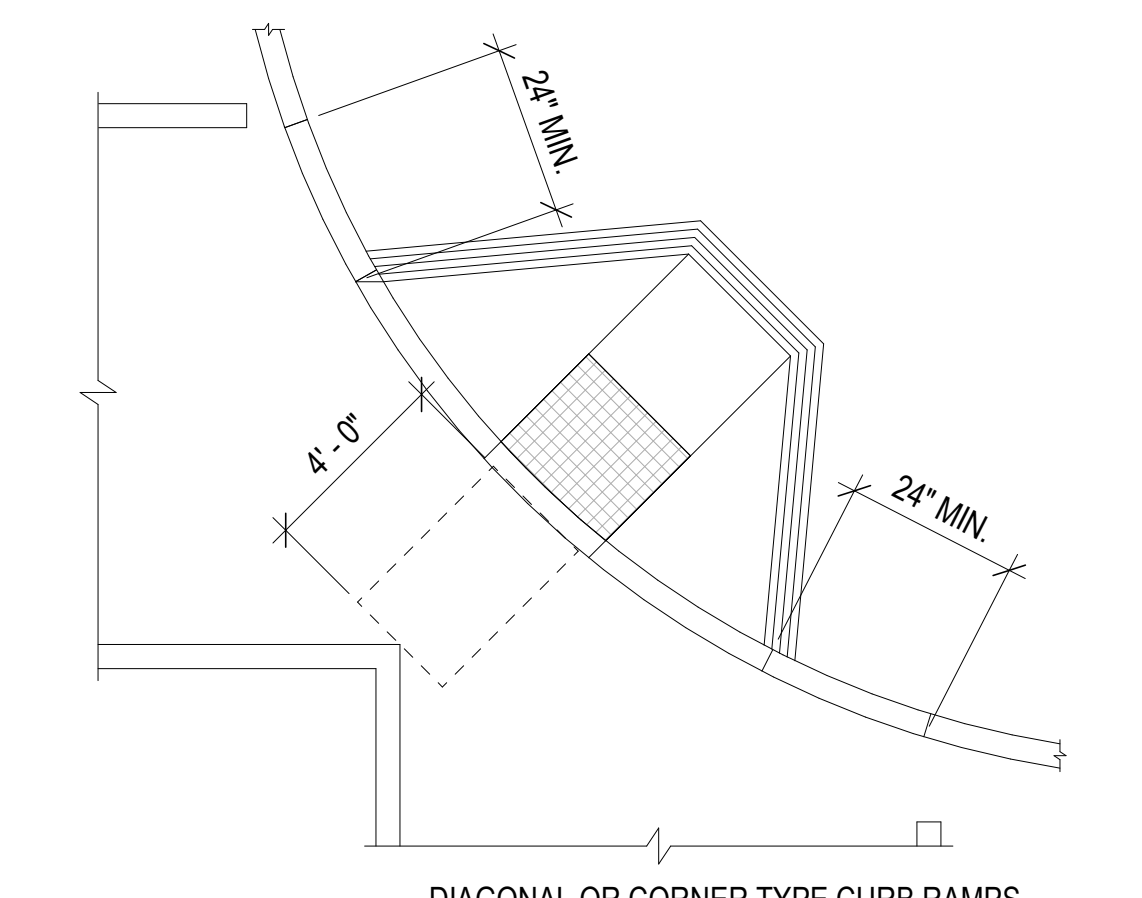
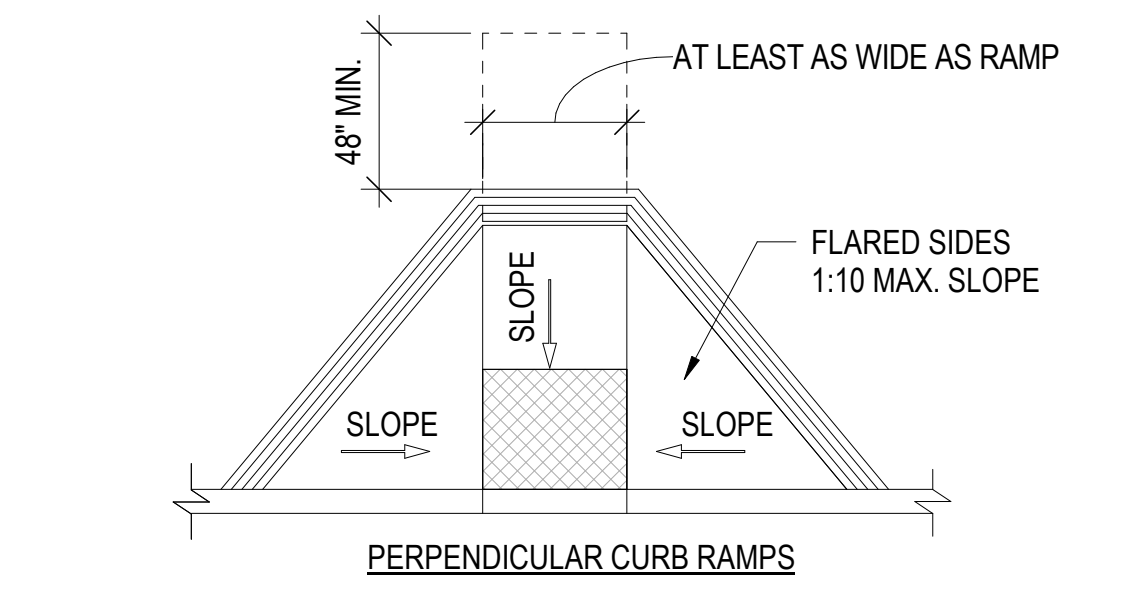
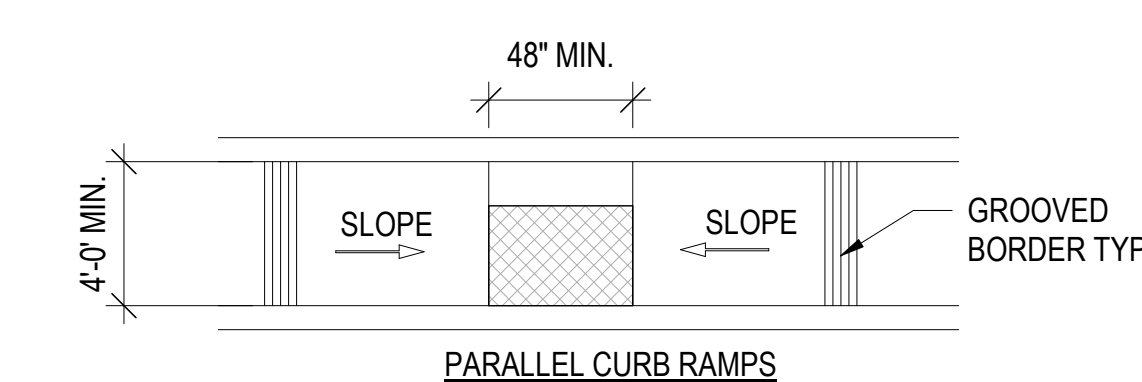
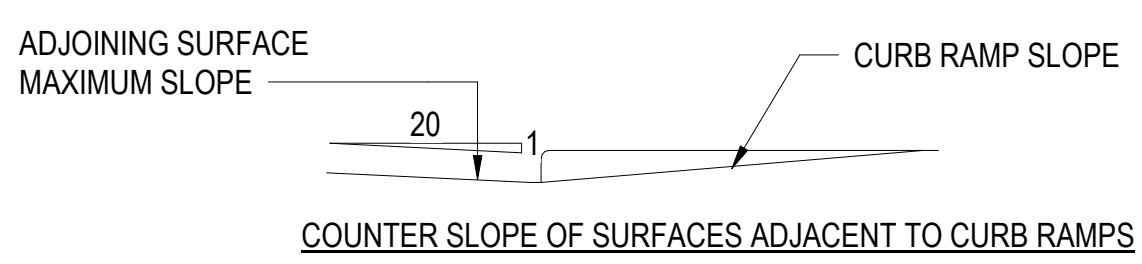
STAIRWAYS (11B-502)

TREADS AND RISERS
• ALL STEPS ON A FLIGHT OF STAIRS SHALL HAVE UNIFORM RISER HEIGHTS AND UNIFORM TREAD DEPTHS. RISERS SHALL BE 4 INCHES HIGH MINIMUM AND 7 INCHES HIGH MAXIMUM. TREADS SHALL BE 11 INCHES DEEP MINIMUM.
OPEN RISERS
• OPEN RISERS ARE NOT PERMITTED.
TREAD SURFACE
• STAIR TREADS SHALL COMPLY WITH 11B-302. CHANGES IN LEVEL ARE NOT PERMITTED.
CONTRASTING STRIPE
• INTERIOR STAIRS SHALL HAVE THE UPPER APPROACH AND LOWER TREAD MARKED BY A STRIPE PROVIDING CLEAR VISUAL CONTRAST. EXTERIOR STAIRS SHALL HAVE THE UPPER APPROACH AND ALL TREADS MARKED BY A STRIPE PROVIDING CLEAR VISUAL CONTRAST. THE STRIPE SHALL BE A MINIMUM OF 2 INCHES WIDE TO A MAXIMUM OF 4 INCHES WIDE PLACED PARALLEL TO AND NOT MORE THAN 1 INCH FROM THE NOSE OF THE STEP OR UPPER APPROACH. THE STRIPE SHALL EXTEND THE FULL WIDTH OF THE STEP OR UPPER APPROACH AND SHALL BE OF MATERIAL THAT IS AT LEAST AS SLIP RESISTANT AS THE OTHER TREADS OF THE STAIR. A PAINTED STRIPE SHALL BE ACCEPTABLE. GROOVES SHALL NOT BE USED TO SATISFY THIS REQUIREMENT.
NOSINGS
• THE RADIUS OF CURVATURE AT THE LEADING EDGE OF THE TREAD SHALL BE 1/2 INCH MAXIMUM. NOSINGS THAT PROJECT BEYOND RISERS SHALL HAVE THE UNDERSIDE OF THE LEADING EDGE CURVED OR BEVELLED. RISERS SHALL BE PERMITTED TO SLOPE UNDER THE TREAD AT AN ANGLE OF 30 DEGREES MAXIMUM FROM VERTICAL. THE PERMITTED PROJECTION OF THE NOSING SHALL EXTEND 1 1/2 INCHES MAXIMUM OVER THE TREAD BELOW.



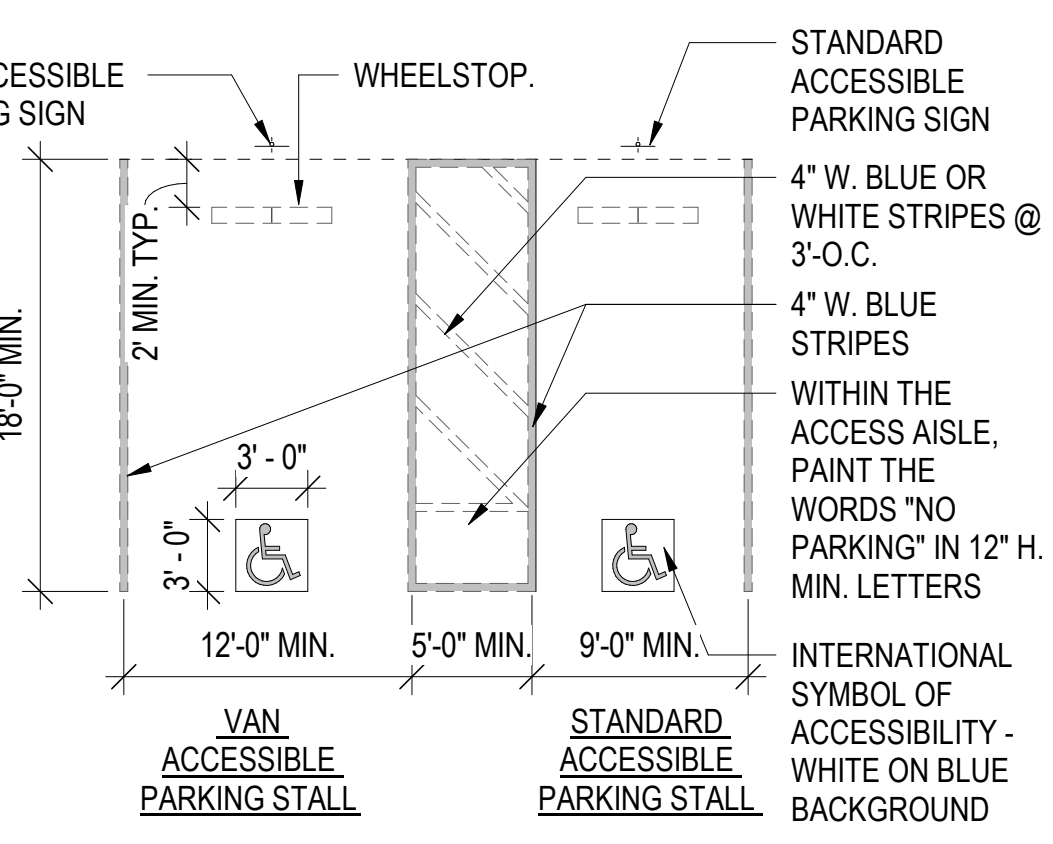
CURB RAMPS 11B-406 (81112A)

CURB RAMPS LOCATION
• CURB RAMPS AND THE FLARED SIDES OF CURB RAMPS SHALL BE LOCATED SO THAT THEY DO NOT PROJECT INTO VEHICULAR TRAFFIC LANES, PARKING SPACES, OR PARKING ACCESS AISLES. CURB RAMPS AT MARKED CROSSINGS SHALL BE WHOLLY CONTAINED WITHIN THE MARKINGS, EXCLUDING ANY FLARED SIDES.
LANDINGS
• LANDINGS SHALL BE PROVIDED AT THE TOPS OF CURB RAMPS. THE LANDING CLEAR LENGTH SHALL BE 48 INCHES MINIMUM. THE LANDING CLEAR WIDTH SHALL BE AT LEAST AS WIDE AS THE CURB RAMP, EXCLUDING FLARED SIDES, LEADING TO THE LANDING. SLOPE OF THE LANDING IN ALL DIRECTIONS SHALL BE 1:48 MAXIMUM.
WIDTH
• THE CLEAR WIDTH OF CURB RAMP RUNS (EXCLUDING ANY FLARED SIDES) SHALL BE 48" MINIMUM.
SLOPE
• RAMP RUNS SHALL HAVE A RUNNING SLOPE NO STEEPER THAN 1:12 WHERE PROVIDED. CURB RAMP FLARES SHALL NOT BE STEEPER THAN 1:10.
• CROSS SLOPE OF CURB RAMP SHALL BE 1:48 MAXIMUM.
GROOVED BORDER
• CURB RAMPS SHALL HAVE A GROOVED BORDER 12 INCHES WIDE ALONG THE TOP OF THE CURB RAMP AT THE LEVEL SURFACE OF THE TOP LANDING AND AT THE OUTSIDE EDGES OF THE FLARED SIDES. THE GROOVED BORDER SHALL CONSIST OF A SERIES OF GROOVES 1/4 INCH WIDE BY 1/4 INCH DEEP AT 3/4 INCH ON CENTER.
DIAGONAL CURB RAMPS
• DIAGONAL OR CORNER TYPE CURB RAMPS WITH RETURNED CURBS OR OTHER WELL-DEFINED EDGES SHALL HAVE THE EDGES PARALLEL TO THE DIRECTION OF PEDESTRIAN FLOW. DIAGONAL CURB RAMPS WITH FLARED SIDES SHALL HAVE A SEGMENT OF CURB 24 INCHES LONG MINIMUM LOCATED ON EACH SIDE OF THE CURB RAMP AND WITHIN THE MARKED CROSSING.



PARKING SPACES (11B-502) (ALSO APPLIES TO 11094)

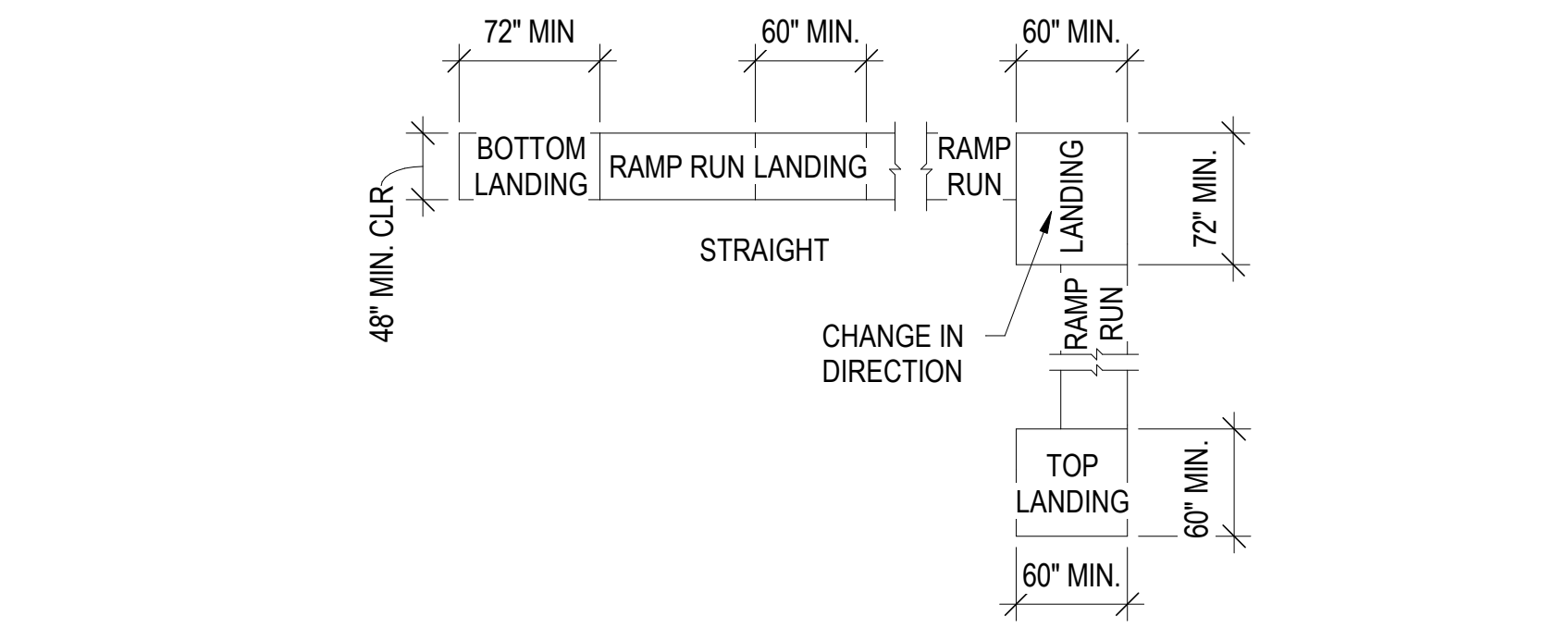
GENERAL WHERE PARKING SPACES ARE MARKED WITH LINES, WIDTH MEASUREMENTS OF PARKING SPACES AND ACCESS AISLES SHALL BE MADE FROM THE CENTERLINE OF THE MARKINGS.
EXCEPTION: WHERE PARKING SPACES OR ACCESS AISLES ARE NOT ADJACENT TO ANOTHER PARKING SPACE OR ACCESS AISLE, MEASUREMENTS SHALL BE PERMITTED TO INCLUDE THE FULL WIDTH OF THE LINE DEFINING THE PARKING SPACE OR ACCESS AISLE.
VEHICLE SPACES
CAR AND VAN PARKING SPACES SHALL BE 216 INCHES LONG MINIMUM. CAR PARKING SPACES SHALL BE 108 INCHES WIDE MINIMUM AND VAN PARKING SPACES SHALL BE 144 INCHES WIDE MINIMUM. SHALL BE MARKED TO DEFINE THE WIDTH, AND SHALL HAVE AN ADJACENT ACCESS AISLE.
EXCEPTION: VAN PARKING SPACES SHALL BE PERMITTED TO BE 108 INCHES WIDE MINIMUM WHERE THE ACCESS AISLE IS 96 INCHES WIDE MINIMUM.
ACCESS AISLES
ACCESS AISLES SERVING PARKING SPACES SHALL BE 60 INCHES WIDE MINIMUM. ACCESS AISLES SHALL ADJOIN AN ACCESSIBLE ROUTE. ACCESS AISLES SHALL BE PERMITTED ON EITHER SIDE OF THE PARKING SPACE EXCEPT FOR VAN PARKING SPACES WHICH SHALL HAVE ACCESS AISLES LOCATED ON THE PASSENGER SIDE OF THE PARKING SPACES. ACCESS AISLES SHALL BE MARKED WITH A BLUE PAINTED BORDERLINE AROUND THEIR PERIMETER. (NOTE: PER 11094.8.5, SINGLE SPACE ACCESS AISLE LOCATED ON PASSENGER SIDE OF VEHICLE)
FLOOR OR GROUND SURFACES
PARKING SPACES AND ACCESS AISLES SERVING THEM SHALL COMPLY WITH 11B-302. ACCESS AISLES SHALL BE AT THE SAME LEVEL AS THE PARKING SPACES THEY SERVE. CHANGES IN LEVEL ARE NOT PERMITTED.
EXCEPTION: SLOPES NOT STEEPER THAN 1:48 SHALL BE PERMITTED.
VERTICAL CLEARANCE PARKING SPACES FOR VANS AND ACCESS AISLES AND VEHICULAR ROUTES SERVING THEM SHALL PROVIDE A VERTICAL CLEARANCE OF 98 INCHES MINIMUM.
IDENTIFICATION
PARKING SPACE IDENTIFICATION SIGNS SHALL INCLUDE THE INTERNATIONAL SYMBOL OF ACCESSIBILITY COMPLYING WITH 11B-703.7.2.1. SIGNS IDENTIFYING VAN PARKING SPACES SHALL CONTAIN THE DESIGNATION "VAN ACCESSIBLE". SIGNS SHALL BE 60 INCHES (80 INCHES MIN. IF IN P.O.T.) MINIMUM ABOVE THE FINISH FLOOR OR GROUND SURFACE MEASURED TO THE BOTTOM OF THE SIGN.
RELATIONSHIP TO ACCESSIBLE ROUTES
PARKING SPACES AND ACCESS AISLES SHALL BE DESIGNED SO THAT CARS AND VANS, WHEN PARKED, CANNOT OBSTRUCT THE REQUIRED CLEAR WIDTH OF ADJACENT ACCESSIBLE ROUTES.
ADDITIONAL SIGNAGE
AN "UNAUTHORIZED PARKING" SIGN SHALL BE POSTED EITHER: 1) IN A CONSPICUOUS PLACE AT EACH ENTRANCE TO AN OFFSET PARKING FACILITY OR 2) IMMEDIATELY ADJACENT TO AN ON-SITE ACCESSIBLE PARKING AND VISIBLE FROM EACH PARKING SPACE.



RAMPS (11B-405)

SLOPE
RAMP RUNS SHALL HAVE A RUNNING SLOPE NOT STEEPER THAN 1:12.
CROSS SLOPE
CROSS SLOPE OF RAMP RUNS SHALL NOT BE STEEPER THAN 1:48.
CLEAR WIDTH
• THE CLEAR WIDTH OF A RAMP SHALL BE 48 INCHES.
EXCEPTIONS:
• HANDRAILS MAY PROJECT INTO THE REQUIRED CLEAR WIDTH OF THE RAMP AT EACH SIDE BY 3 1/2 INCHES MAXIMUM.
• THE CLEAR WIDTH OF RAMPS IN RESIDENTIAL USES SERVING AN OCCUPANT LOAD OF 50 OR LESS SHALL BE 36" MINIMUM BETWEEN HANDRAILS.

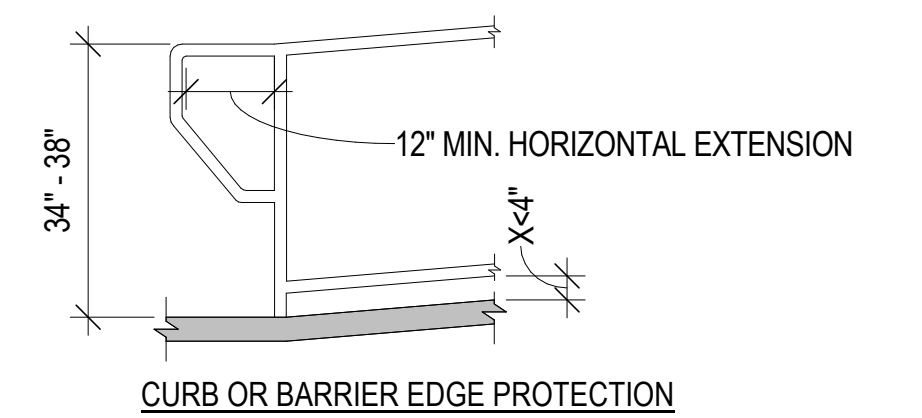
RISE
THE RISE FOR ANY RAMP RUN SHALL BE 30 INCHES MAXIMUM. LANDINGS, RAMPS SHALL HAVE LANDINGS AT THE TOP AND THE BOTTOM OF EACH RAMP RUN.



RAMP LANDINGS

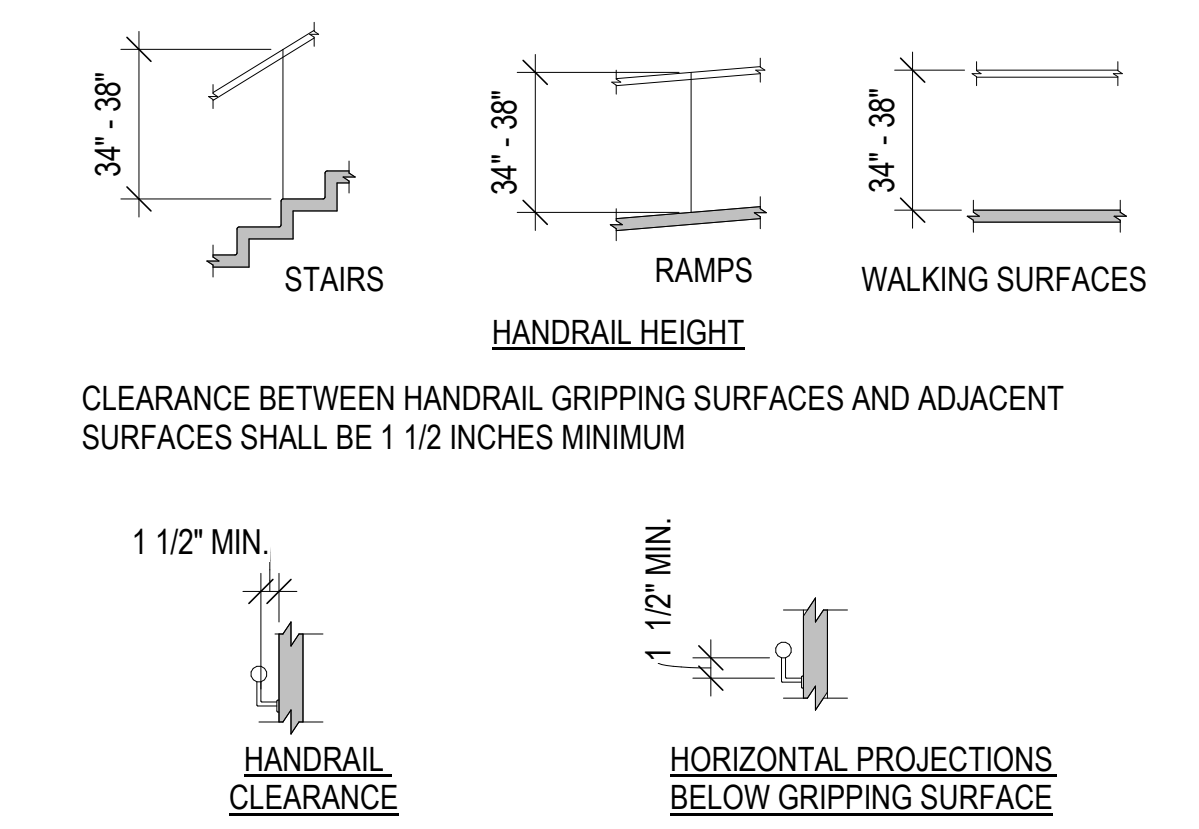
SLOPE
• LANDINGS SHALL HAVE SLOPE NO STEEPER THAN 1:48. CHANGES IN LEVEL ARE NOT PERMITTED.
WIDTH
• THE LANDING CLEAR WIDTH SHALL BE AT LEAST AS WIDE AS THE WIDEST RAMP RUN LEADING TO THE LANDING.
LENGTH
• THE LANDING CLEAR LENGTH SHALL BE 60 INCHES LONG MINIMUM.
CHANGE IN DIRECTION
• RAMPS THAT CHANGE DIRECTION BETWEEN RUNS AT LANDINGS SHALL HAVE A CLEAR LANDING 60 INCHES MINIMUM BY 72 INCHES MINIMUM IN THE DIRECTION OF DOWNWARD TRAVEL FROM THE UPPER RAMP RUN DOORWAYS.

• WHERE DOORWAYS ARE LOCATED ADJACENT TO A RAMP LANDING, MANEUVERING CLEARANCES REQUIRED SHALL BE PERMITTED TO OVERLAP THE REQUIRED LANDING AREA.
• DOORS FULLY OPEN SHALL NOT REDUCE THE REQUIRED RAMP LANDING BY MORE THAN 3 INCHES.
• DOORS IN ANY POSITION SHALL NOT REDUCE THE MINIMUM DIMENSION OF THE RAMP LANDING TO LESS THAN 42 INCHES.
HANDRAILS
• RAMP RUNS SHALL HAVE HANDRAILS COMPLYING WITH 11B-505
EDGE PROTECTION
• SHALL BE PROVIDED ON EACH SIDE OF RAMP RUNS AND EACH SIDE OF RAMP LANDINGS. A CURB 2 INCHES HIGH MINIMUM OR BARRIER SHALL BE PROVIDED THAT PREVENTS THE PASSAGE OF A 4 INCH DIAMETER SPHERE. TO PREVENT WHEEL ENTRAPMENT THE CURB OR BARRIER SHALL PROVIDE A CONTINUOUS AND UNINTERRUPTED BARRIER ALONG THE LENGTH OF THE RAMP.

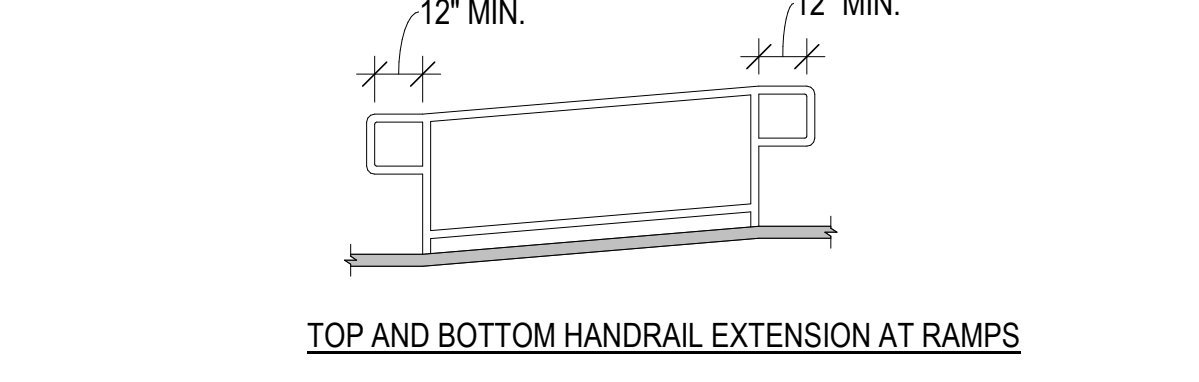


HANDRAILS (11B-505)

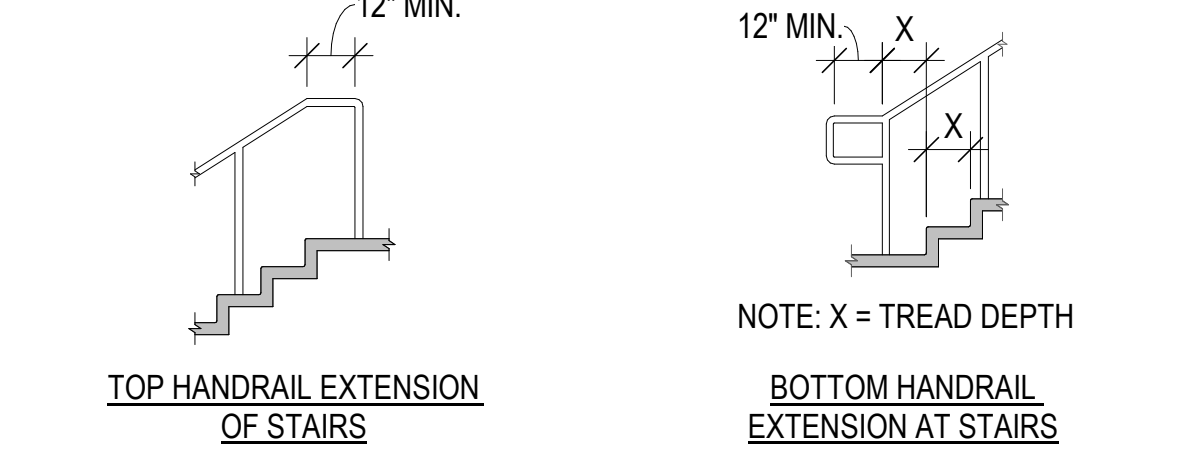
HANDRAILS SHALL BE PROVIDED ON BOTH SIDES OF STAIRS AND RAMPS.
EXCEPTIONS:
- IN ASSEMBLY AREAS, HANDRAILS SHALL NOT BE REQUIRED ON BOTH SIDES OF AISLE RAMP WHERE A HANDRAIL IS PROVIDED AT EITHER SIDE OR WITHIN THE AISLE WIDTH.
- CURB RAMPS DO NOT REQUIRE HANDRAILS.
- AT DOOR LANDINGS, HANDRAILS ARE NOT REQUIRED WHEN A RAMP RUN IS LESS THAN 6 INCHES IN RISE OR 72 INCHES IN LENGTH.
- STAIRWAYS WITHIN DWELLING UNITS ARE PERMITTED TO HAVE A HANDRAIL ON ONE SIDE ONLY (1009.15).
CONTINUITY HANDRAILS SHALL BE CONTINUOUS WITHIN THE FULL LENGTH OF EACH STAIR FLIGHT OR RAMP RUN. INSIDE HANDRAILS ON SWITCHBACK OR DOGLEG STAIRS AND RAMPS SHALL BE CONTINUOUS BETWEEN FLIGHTS OR RUNS. IN ASSEMBLY AREAS, RAMP HANDRAILS ADJACENT TO SEATING OR WITHIN THE AISLE ARE NOT REQUIRED TO BE CONTINUOUS.
HEIGHT
TOP OF GRIPPING SURFACES OF HANDRAILS SHALL BE 34 INCHES MINIMUM AND 38 INCHES MAXIMUM VERTICALLY ABOVE WALKING SURFACES, STAIR NOSINGS, AND RAMP SURFACES. HANDRAILS SHALL BE AT A CONSISTENT HEIGHT ABOVE WALKING SURFACES, STAIR NOSINGS, AND RAMP SURFACES.



GRIPPING SURFACE
HANDRAIL GRIPPING SURFACES SHALL BE CONTINUOUS ALONG THEIR LENGTH AND SHALL NOT BE OBSTRUCTED ALONG THEIR TOPS OR SIDES, WHERE PROVIDED. HORIZONTAL PROJECTIONS SHALL OCCUR 1 1/2 INCHES MINIMUM BELOW THE BOTTOM OF THE HANDRAIL GRIPPING SURFACE.
CIRCULAR CROSS SECTION
HANDRAIL GRIPPING SURFACES WITH A CIRCULAR CROSS SECTION SHALL HAVE AN OUTSIDE DIAMETER OF 1 1/4 INCHES MINIMUM AND 2 INCHES MAXIMUM.
SURFACES
HANDRAIL GRIPPING SURFACES AND ANY SURFACES ADJACENT TO THEM SHALL BE FREE OF SHARP OR ABRASIVE ELEMENTS AND SHALL HAVE ROUNDED EDGES.
FITTINGS
HANDRAILS SHALL NOT ROTATE WITHIN THEIR FITTINGS.
HANDRAIL EXTENSIONS
HANDRAIL GRIPPING SURFACES SHALL EXTEND BEYOND AND IN THE SAME DIRECTION OF STAIR FLIGHTS AND RAMP RUNS.
EXCEPTIONS:
- EXTENSIONS SHALL NOT BE REQUIRED FOR CONTINUOUS HANDRAILS AT THE INSIDE TURN OF SWITCH BACK OR DOGLEG STAIRS AND RAMPS.
- IN ASSEMBLY AREAS EXTENSIONS SHALL NOT BE REQUIRED FOR RAMP HANDRAILS IN AISLES SERVING SEATING WHERE THE HANDRAILS ARE DISCONTINUOUS TO PROVIDE ACCESS TO SEATING AND TO PERMIT CROSSOVER WITHIN AISLES.
- IN ALTERATIONS WHERE THE EXTENSION OF THE HANDRAIL IN THE DIRECTION OF RAMP RUN WOULD CREATE A HAZARD THE EXTENSION OF THE HANDRAIL MAY BE TURNED 90 DEG. FROM THE RAMP RUN TOP AND BOTTOM EXTENSION AT RAMPS.
RAMP HANDRAILS SHALL EXTEND HORIZONTALLY ABOVE THE LANDING FOR 12 INCHES MINIMUM BEYOND THE TOP AND BOTTOM OF RAMP RUNS. EXTENSIONS SHALL RETURN TO A WALL, GUARD, OR THE LANDING SURFACE, OR SHALL BE CONTINUOUS TO THE HANDRAIL OF AN ADJACENT RAMP RUN.



TOP EXTENSION AT STAIRS
AT THE TOP OF A STAIR FLIGHT, HANDRAILS SHALL EXTEND HORIZONTALLY ABOVE THE LANDING FOR 12 INCHES MINIMUM BEGINNING DIRECTLY ABOVE THE FIRST RISER NOSING. EXTENSIONS SHALL RETURN TO A WALL, GUARD, OR THE LANDING SURFACE, OR SHALL BE CONTINUOUS TO THE HANDRAIL OF AN ADJACENT STAIR FLIGHT.



BOTTOM EXTENSION AT STAIRS
AT THE BOTTOM OF A STAIR FLIGHT, HANDRAILS SHALL EXTEND AT THE SLOPE OF THE STAIR FLIGHT FOR A HORIZONTAL DISTANCE AT LEAST EQUAL TO ONE TREAD DEPTH BEYOND THE LAST RISER NOSING. SUCH EXTENSION SHALL CONTINUE WITH A HORIZONTAL EXTENSION OR SHALL BE CONTINUOUS TO THE HANDRAIL OF AN ADJACENT STAIR FLIGHT OR SHALL RETURN TO THE WALL, GUARD, OR THE WALKING SURFACE. AT THE BOTTOM OF A STAIR FLIGHT, A HORIZONTAL EXTENSION SHALL BE 12 INCHES LONG MINIMUM AND A HEIGHT EQUAL TO THAT OF THE SLOPING PORTION OF THE HANDRAIL AS MEASURED ABOVE THE STAIR NOSINGS. EXTENSION SHALL RETURN TO A WALL, GUARD, OR THE LANDING SURFACE, OR SHALL BE CONTINUOUS TO THE HANDRAIL OF AN ADJACENT STAIR FLIGHT.

OPERABLE PARTS (11B-309)

CLEAR FLOOR SPACE
A CLEAR FLOOR OR GROUND SPACE COMPLYING WITH 11B-305 SHALL BE PROVIDED.
HEIGHT
OPERABLE PARTS SHALL BE PLACED WITHIN ONE OR MORE OF THE REACH RANGES (11B-308).
OPERATION
OPERABLE PARTS SHALL BE OPERABLE WITH ONE HAND AND SHALL NOT REQUIRE TIGHT GRASPING, PINCHING, OR TWISTING OF THE WRIST. THE FORCE REQUIRED TO ACTIVATE OPERABLE PARTS SHALL BE 5 POUNDS MAXIMUM.