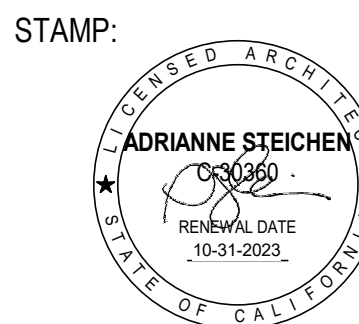




TNDC
201 Eddy Street
San Francisco, CA
94102

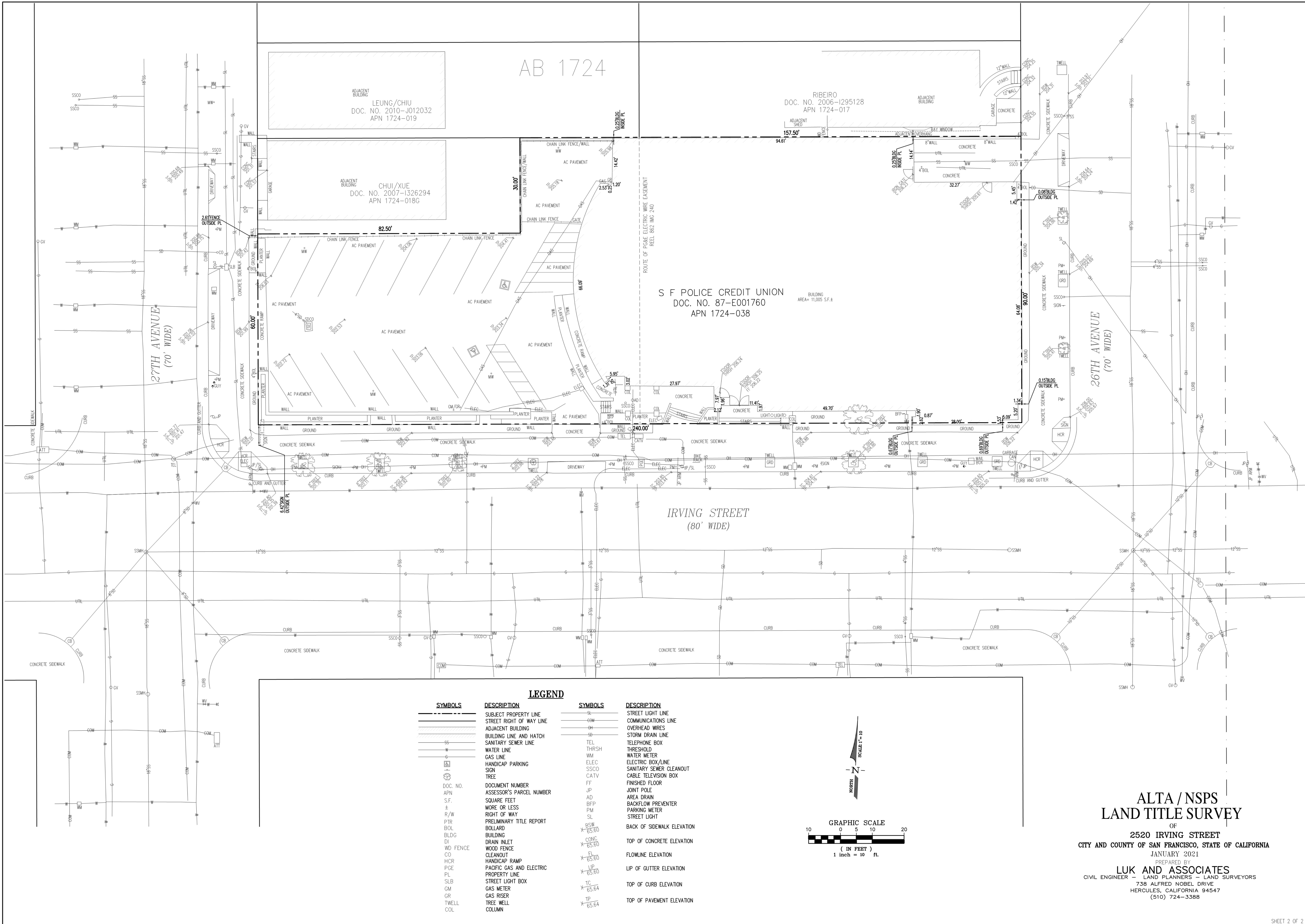
2550 IRVING ST
2550 Irving Street
San Francisco, CA 94122



REVISION SCHEDULE
NO. | ISSUE | DATE
SITE PERMIT 04/27/2021

JOB NUMBER 1941
DRAWN BY Author
CHECKED BY Checker
ISSUE DATE 04/27/2022

SHEET:
SS2.00



F:\Jobs\FILE2019\19210A10\ALTA-19179A10

JOB NO.: 19210A10 PLOT DATE: JANUARY 22, 2021

SHEET 2 OF 2

2550 IRVING ST. SITE IMPROVEMENTS

2550 IRVING ST.
SAN FRANCISCO, CA 94122

GENERAL NOTES:

- WORK SHOWN HEREON SHALL BE DONE IN ACCORDANCE WITH THE "CALTRANS STANDARD SPECIFICATIONS," LATEST EDITION AND SUPPLEMENTS, THE CALIFORNIA BUILDING CODE (EXCAVATION AND GRADING), AND CITY OF SAN FRANCISCO LOCAL ORDINANCES AS APPLICABLE.
- EXISTING TOPOGRAPHY SHOWN HEREON WAS TAKEN FROM A SURVEY DATED JANUARY 2021 BY LUK AND ASSOCIATES.
- THE CONTRACTOR SHALL ASSUME SOLE AND COMPLETE RESPONSIBILITY FOR THE JOB SITE CONDITIONS, INCLUDING SAFETY OF ALL PERSONS AND PROPERTY, DURING THE COURSE OF CONSTRUCTION OF THIS PROJECT. THIS REQUIREMENT SHALL APPLY CONTINUOUSLY, AND SHALL NOT BE LIMITED TO NORMAL WORKING HOURS.
- PRIOR TO COMMENCING CONSTRUCTION, THE CONTRACTOR SHALL VERIFY ALL SITE CONDITIONS FOR GRADING, DRAINAGE AND UNDERGROUND FACILITIES INCLUDING LOCATION AND ELEVATION OF EXISTING UNDERGROUND FACILITIES AT CROSSINGS WITH PROPOSED UNDERGROUND FACILITIES. IF CONDITIONS DIFFER FROM THOSE SHOWN ON THE PLANS, THE CONTRACTOR SHALL NOTIFY THE ENGINEER AND SHALL NOT BEGIN CONSTRUCTION UNTIL THE CHANGED CONDITIONS HAVE BEEN EVALUATED.
- ALL DRAWINGS ARE CONSIDERED TO BE A PART OF THE CONTRACT DOCUMENTS. THE CONTRACTOR SHALL BE RESPONSIBLE FOR THE REVIEW AND COORDINATION OF ALL DRAWINGS AND SPECIFICATIONS PRIOR TO THE START OF CONSTRUCTION. ANY DISCREPANCIES THAT OCCUR SHALL BE BROUGHT TO THE ATTENTION OF THE ARCHITECT PRIOR TO THE START OF CONSTRUCTION SO THAT A CLARIFICATION CAN BE ISSUED. ANY WORK PERFORMED IN CONFLICT WITH THE CONTRACT DOCUMENTS OR ANY CODE REQUIREMENTS SHALL BE CORRECTED BY THE CONTRACTOR AT THEIR OWN EXPENSE AND AT NO EXPENSE TO THE OWNER OR ARCHITECT.
- THE ENGINEER PREPARING THESE PLANS WILL NOT BE RESPONSIBLE FOR, OR LIABLE FOR, UNAUTHORIZED CHANGES TO OR USES OF THESE PLANS. ALL CHANGES TO THE PLANS MUST BE IN WRITING AND MUST BE APPROVED BY THE PREPARER OF THESE PLANS.
- NOTES AND DETAILS ON DRAWINGS SHALL TAKE PRECEDENCE OVER GENERAL NOTES AND TYPICAL DETAILS. WHERE NO DETAILS ARE GIVEN, CONSTRUCTION SHALL BE AS SHOWN FOR SIMILAR WORK.
- THE EXISTENCE, LOCATION AND CHARACTERISTICS OF UNDERGROUND UTILITY INFORMATION SHOWN ON THESE PLANS HAVE BEEN OBTAINED FROM A REVIEW OF AVAILABLE RECORD DATA. NO REPRESENTATION IS MADE AS TO THE ACCURACY OR COMPLETENESS OF SAID UTILITY INFORMATION. THE CONTRACTOR SHALL TAKE PRECAUTIONARY MEASURES TO PROTECT THE UTILITY LINES SHOWN AND ANY OTHER LINES NOT OF RECORD OR NOT SHOWN ON THESE PLANS.
- IF AT ANY TIME DURING GRADING OPERATIONS, ANY UNFAVORABLE GEOLOGICAL CONDITIONS ARE ENCOUNTERED, GRADING IN THAT AREA WILL STOP UNTIL APPROVED CORRECTIVE MEASURES ARE OBTAINED.
- THE PROPOSED GRADE IS THE FINAL GRADE AND NOT THE ROUGH GRADE. THE CONTRACTOR SHALL SUBTRACT THE THICKNESS OF THE PAVED SECTION AND/OR LANDSCAPE TOPSOIL SECTION TO ARRIVE AT THE ROUGH GRADE ELEVATION.
- STRAIGHT GRADE SHALL BE MAINTAINED BETWEEN CONTOUR LINES AND SPOT ELEVATIONS UNLESS OTHERWISE SHOWN ON THE PLANS.
- ALL DEBRIS AND FOREIGN MATERIAL SHALL BE REMOVED FROM THE SITE AND DISPOSED OF AT APPROVED DISPOSAL SITES. THE CONTRACTOR SHALL OBTAIN NECESSARY PERMITS FOR THE TRANSPORTATION OF MATERIAL TO AND FROM THE SITE.
- ALL FILL SOILS OR SOILS DISTURBED OR OVEREXCAVATED DURING CONSTRUCTION SHALL BE COMPACTED PER THE REQUIREMENTS OF THE SOILS REPORT BUT NOT LESS THAN 90% MAXIMUM DENSITY AS DETERMINED BY A.S.T.M. SOIL COMPACTION TEST D-1557.
- THE CONTRACTOR SHALL OBTAIN AN O.S.H.A. PERMIT FROM THE CALIFORNIA DIVISION OF INDUSTRIAL SAFETY PRIOR TO THE CONSTRUCTION OF TRENCHES OR EXCAVATIONS WHICH ARE FIVE FEET OR DEEPER.
- DIMENSIONS TO PIPELINES ARE TO CENTERLINE UNLESS OTHERWISE NOTED.
- ALL WATER LINES SHALL BE INSTALLED WITH 36" MINIMUM COVER FROM TOP OF PIPE TO FINISHED GRADE, UNLESS OTHERWISE NOTED.
- THRUST BLOCKS SHALL BE INSTALLED AT WATERLINE HORIZONTAL AND VERTICAL BENDS, TEES, CAPPED ENDS AND REDUCERS ACCORDING TO THE DETAILS PROVIDED ON THESE PLANS.
- CONSTRUCTION STAKING FOR IMPROVEMENTS SHOWN ON THESE PLANS SHALL BE PERFORMED BY A LICENSED LAND SURVEYOR.
- THE CONTRACTOR SHALL REPLACE ALL EXISTING IMPROVEMENTS DAMAGED DURING CONSTRUCTION TO MATCH EXISTING, INCLUDING PERMANENT TRENCH RESURFACING.
- CONTRACTOR TO CONTACT UNDERGROUND SERVICE ALERT (800-227-2600) PRIOR TO EXCAVATION.
- ALL DIMENSIONS ARE IN FEET OR DECIMALS THEREOF.
- ALL CURB DIMENSIONS AND RADII ARE TO PAVEMENT FACE OF CURB.
- CONTRACTOR TO BE AWARE OF ALL OVERHEAD LINES AT ALL TIMES, SO AS NOT TO DISTURB THEM.
- CONTRACTOR SHALL OBTAIN ANY NECESSARY PERMITS FROM THE CITY OF NEWARK FOR ALL WORK WITHIN THE PUBLIC RIGHT-OF-WAY.
- STORM DRAINAGE SYSTEMS SHOWN ON THESE PLANS HAVE BEEN DESIGNED FOR THE FINAL SITE CONDITION AT COMPLETION OF THE PROJECT. THE CONTRACTOR IS RESPONSIBLE FOR MAINTAINING ADEQUATE DRAINAGE OF THE SITE, DURING INTERIM CONDITIONS OF CONSTRUCTION.
- CONTRACTOR SHALL OBTAIN ALL REQUIRED PERMITS, INCLUDING NPDES, FROM THE APPROPRIATE JURISDICTIONAL AGENCIES FOR DISCHARGE OF GROUNDWATER THAT MAY BE NECESSARY TO ACCOMPLISH EXCAVATIONS SHOWN ON THESE PLANS.

LEGEND:

CONTOUR	
SPOT ELEVATION	
FLOW (DIRECTION AND SLOPE)	
SANITARY SEWER	
WATER	
DOMESTIC WATER	
STORM DRAIN	
GAS	
ELECTRIC	
FIRE WATER	
STORM DRAIN INLET	
SAND TRAP	
SEWER CLEANOUT	
AREA DRAIN	
CAP OR PLUG	
FIRE HYDRANT	
FDC	
PV	
WATER VALVE	
WATER METER	
INLET PROTECTION	
FILTER BAGS	
SAWCUT	
CURB AND GUTTER	
LIMIT OF DISTURBANCE	
TO BE DEMOLISHED	
PROPERTY LINE/R.O.W.	
GRADE BREAK LINE	
CHAINLINK FENCE	
SEDIMENT BARRIER	
BUILDING FOOTPRINT	
CONCRETE PAVEMENT	
ASPHALT PAVEMENT	
LANDSCAPE AREA	
BIORETENTION ON STRUCTURE	
BIORETENTION ON GRADE	
CONCRETE PAVEMENT REMOVAL	
DEMOLISH STRUCTURE	
ASPHALT CONCRETE PAVEMENT REMOVAL	

ABBREVIATIONS:

AC	ASPHALTIC CONCRETE	MH	MANHOLE
BW	BACK OF WALK	NTS	NOT TO SCALE
BLDG	BUILDING	PA	PLANTER AREA
BM	BENCH MARK	POC	POINT OF CONNECTION
BOS	BOTTOM OF STAIRS	PW	POST INDICATOR VALVE
CB	CATCH BASIN	POC	PORTLAND CEMENT CONCRETE
CI	CAST IRON	PRV	PRESSURE REDUCING VALVE
CL	CENTER LINE	PVC	POLYVINYL CHLORIDE
CMU	CONCRETE MASONRY UNIT	R	RADIUS
CO	CLEANOUT	RCIP	RECTANGULAR CAST IRON PIPE
CONC	CONCRETE	RCIP	REINFORCED CONCRETE PIPE
CF	CURB FACE	RD	ROOF DRAIN
DW	DOMESTIC WATER	SD	STORM DRAIN
EL. OR ELEV	ELEVATION	SSMH	SANITARY SEWER MANHOLE
ELEC	ELECTRIC, ELECTRICAL	SS	SANITARY SEWER
EX. OR EXST.	EXISTING	STD	STANDARD
FDC	FIRE DEPARTMENT CONNECTION	SDMH	STORM DRAIN MANHOLE
FF	FINISHED FLOOR	TC	TOP OF CURB
FG	FINISHED GRADE (LANDSCAPE)	TEL	TELEPHONE
FS	FINISHED SURFACE (HARDSCAPE)	TG	TOP OF GRATE
FH	FIRE HYDRANT	TOS	TOP OF STAIRS
FL	FLOW LINE	TW	TOP OF WALL
FT	FOOT OR FEET	TS	TRAFFIC SIGNAL
FS	FIRE SERVICE	TSB	TRAFFIC SIGNAL BOX
GV	GATE VALVE	TYP	TYPICAL
HDPE	HIGH DENSITY POLYETHYLENE	TV	TELEVISION
HP	HIGH POINT	VIF	VERIFY IN FIELD
INV.	INVERT	VLT	VAULT
LP	LOW POINT	VCP	VITRIFIED CLAY PIPE
MAX.	MAXIMUM	W	WATER
MIN.	MINIMUM	WM	WATER METER
		WV	WATER VALVE

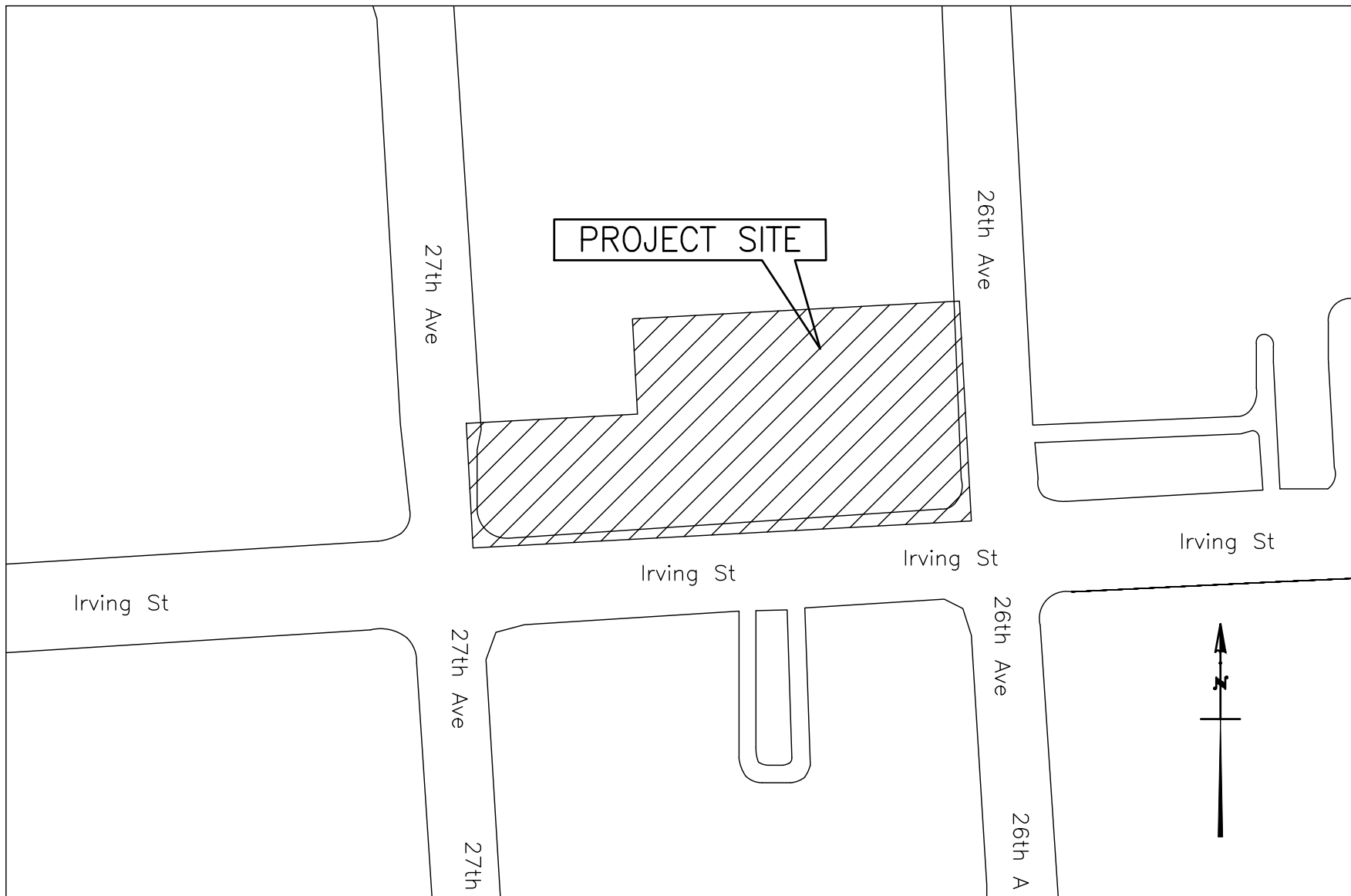
CITY OF SAN FRANCISCO APPLICABLE STANDARD DETAILS

- 87.170 - STANDARD COMBINED CURB AND PARKING STRIP OR GUTTER
- 87.171 - DRIVEWAY CONSTRUCTION
- 87.173 - STANDARD CONSTRUCTION JOINTS FOR CONCRETE SIDEWALK AND CURB
- 87.196 - TYP INSTALLATION OF BUILDING SEWER AND SIDE SEWER
- 102.858 - STANDARD CURB RAMP PLANS

SHEET INDEX:

CIVIL DRAWINGS

C0.1	TITLE SHEET & GENERAL NOTES
C0.2	EXISTING CONDITIONS
C0.3	FIRE ACCESS PLAN
C1.1	DEMOLITION PLAN
C1.2	EROSION CONTROL PLAN NOTES
C2.1	SITE LAYOUT PLAN
C3.1	GRADING AND DRAINAGE PLAN
C4.1	UTILITY PLAN
C5.1	DETAILS



VICINITY MAP
NOT TO SCALE

kpff

45 Fremont Street, 28th Floor
San Francisco, CA 94105
415.989.1004 | kpff.com
CEOR Name: Ryan Beaton
CEOR Email: ryan.beaton@kpff.com

PYATOK
1611 TELEGRAPH AVE.
SUITE 200
OAKLAND, CA 94612
T: 510.465.7010 | F: 510.465.8575
www.pyatok.com

TNDC

201 Eddy Street
San Francisco, CA
94102

2550 IRVING ST

2550 Irving Street
San Francisco, CA 94122

STAMP:



REVISION SCHEDULE
NO. | ISSUE | DATE

JOB NUMBER: 1941
DRAWN BY: JK
CHECKED BY: RB
ISSUE DATE: 4/27/2022
SCALE: PER PLAN
TITLE: TITLE SHEET & GENERAL NOTES

SHEET:

C0.1

PRELIMINARY - Not for Construction -

© 2019 PYATOK ARCHITECTURE & URBAN DESIGN

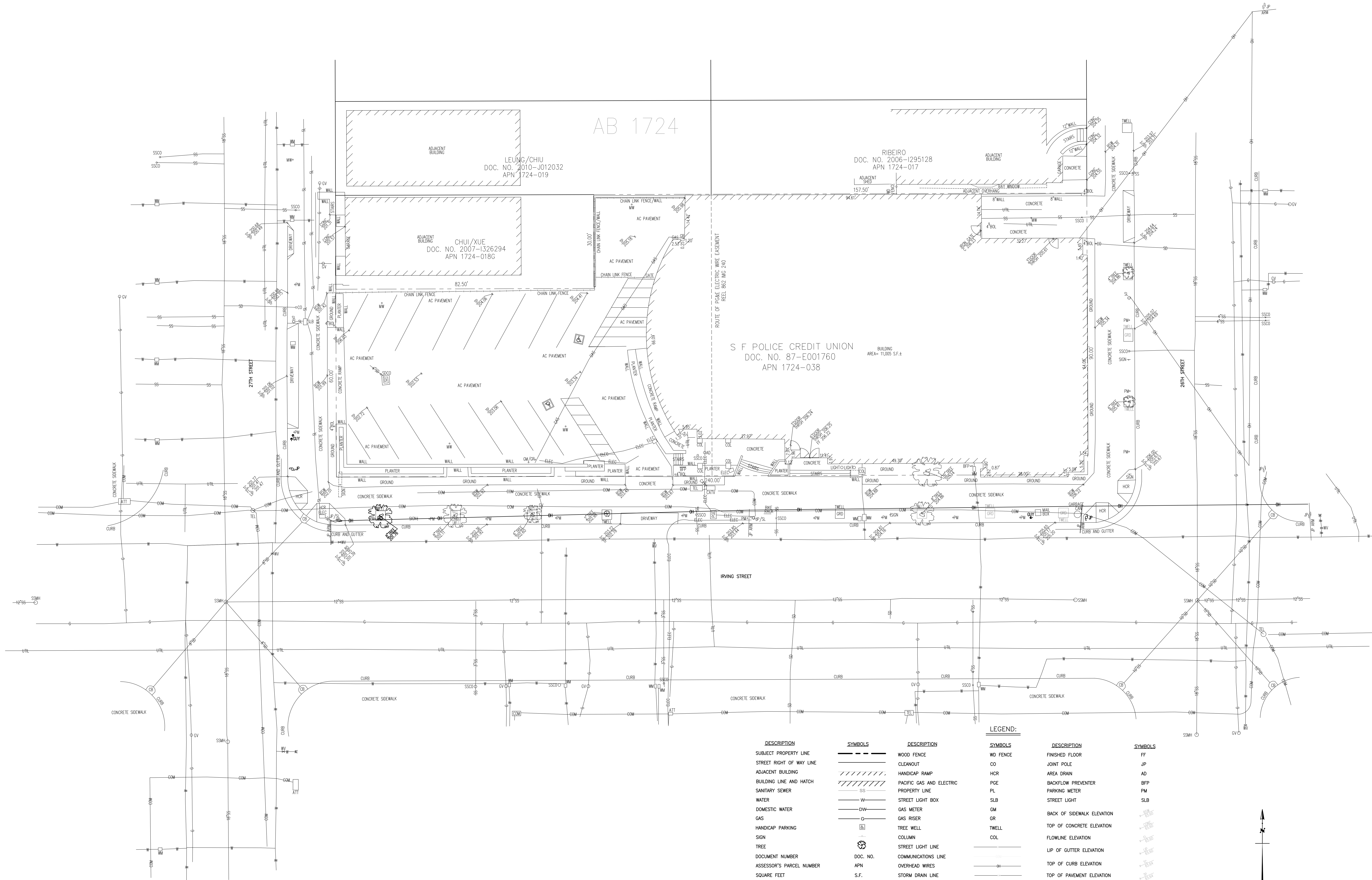


REVISION SCHEDULE
NO. | ISSUE | DATE

JOB NUMBER: 1941
DRAWN BY: JK
CHECKED BY: RB
ISSUE DATE: 4/27/2022
SCALE: PER PLAN
TITLE: EXISTING CONDITIONS

SHEET:

C0.2





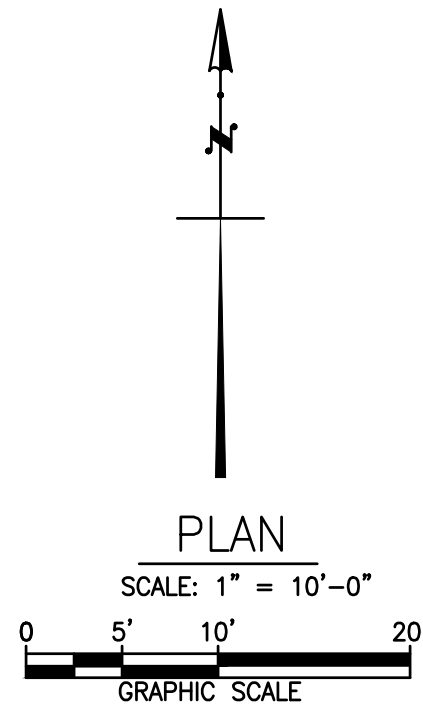
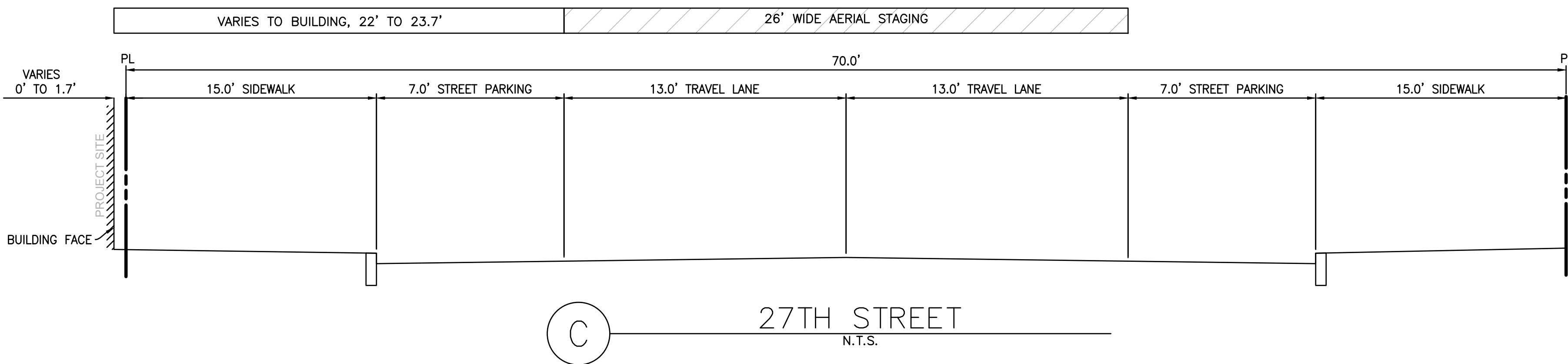
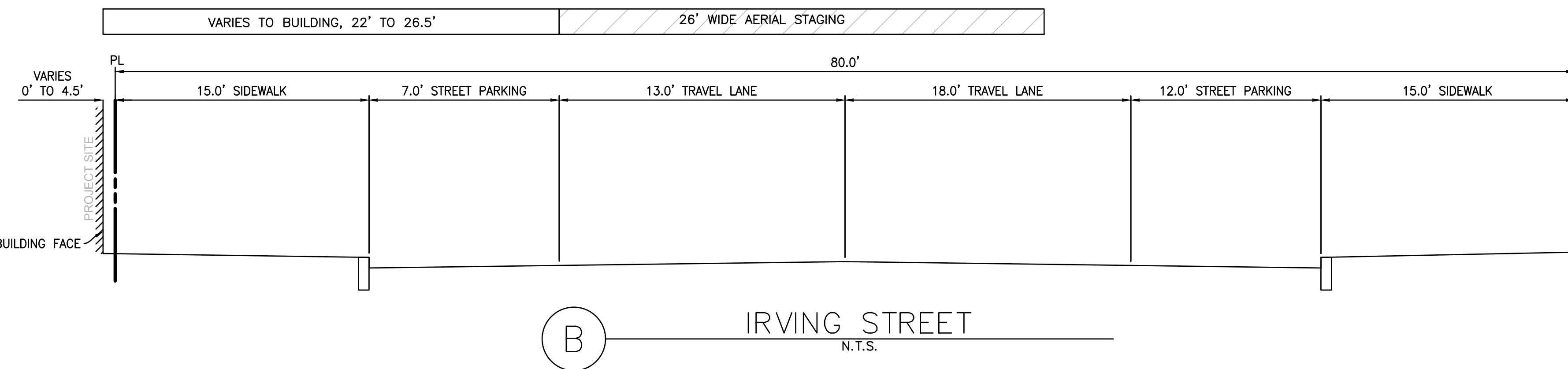
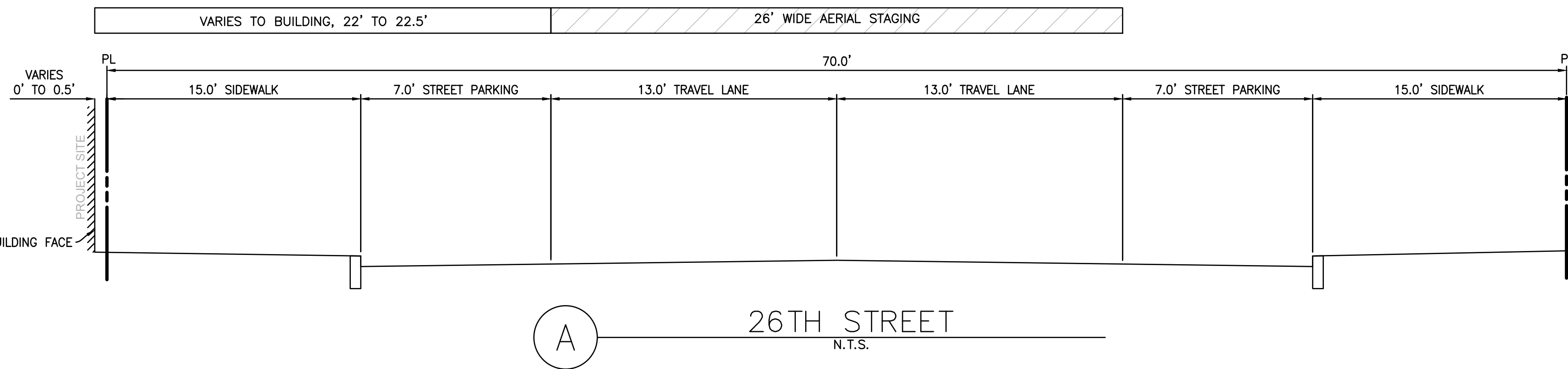
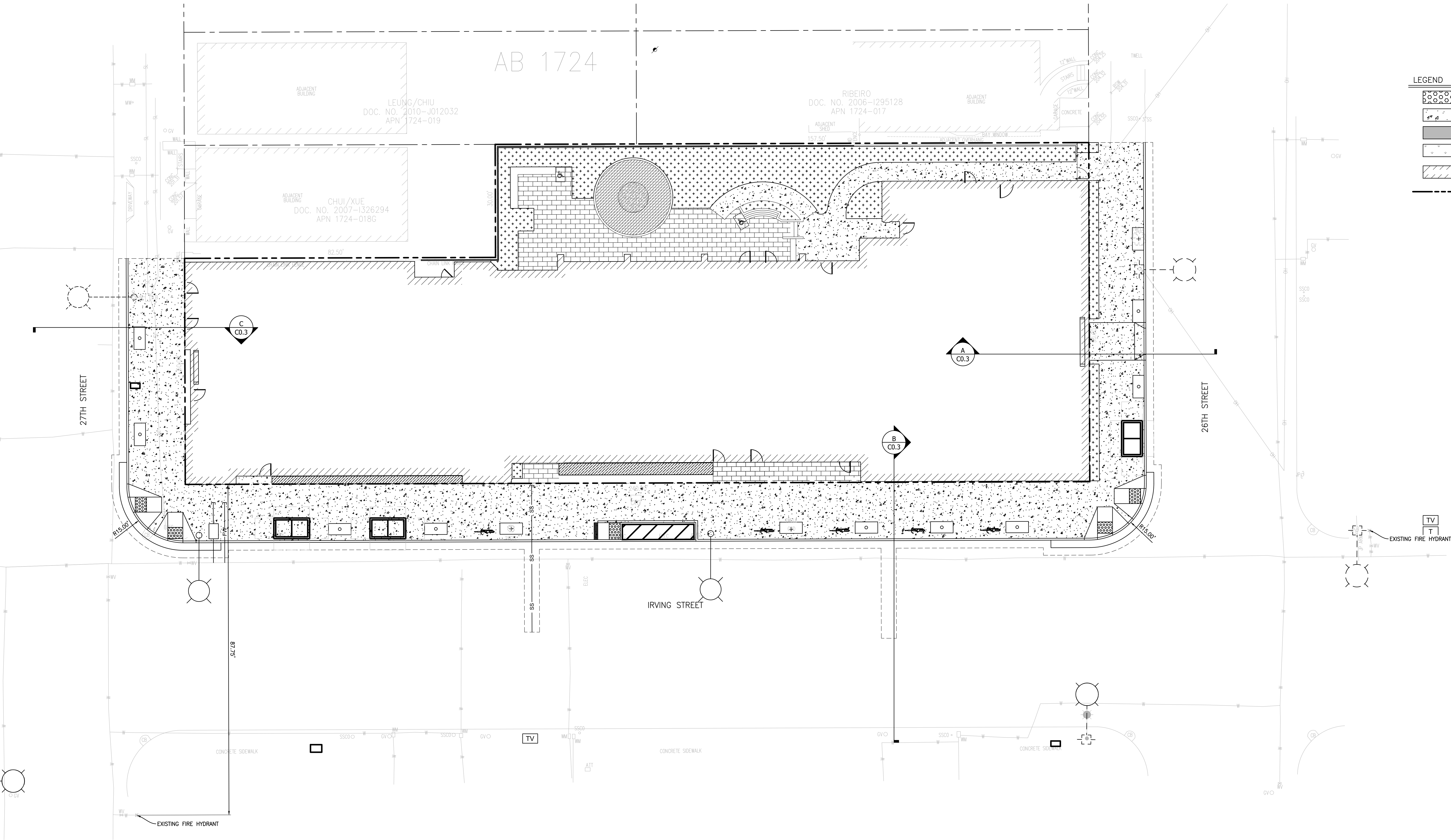
REVISION SCHEDULE	DATE
NO. ISSUE	DATE

JOB NUMBER:	1941
DRAWN BY:	JK
CHECKED BY:	RB
ISSUE DATE:	4/27/2022
SCALE:	PER PLAN
TITLE:	FIRE ACCESS PLAN

SHEET:

C0.3

LEGEND	
	TRUNCATED DOMES - SEE DETAIL 1 - SHEET C5.1
	CONCRETE PAVING - SEE DETAIL 2 - SHEET C5.1
	ASPHALT PAVING - SEE DETAIL 3 - SHEET C5.1
	LANDSCAPING/TREE WELL (SEE LANDSCAPE PLAN)
	BUILDING FACE
	PROPERTY LINE





- GENERAL DEMOLITION NOTES:
1. CONTRACTOR TO CLEAR PROJECT SITE AREA WITHIN THE CONFINES OF THE DEMOLITION LIMIT LINE. THE CONTRACTOR SHALL DEMOLISH AND REMOVE FROM THE SITE ALL EXISTING UTILITIES, STRUCTURES, PLANTERS, TREES, AND ALL OTHER SITE FEATURES, UNLESS OTHERWISE NOTED ON THE PLAN.
 2. REMOVAL OF LANDSCAPING SHALL INCLUDE ROOTS AND ORGANIC MATERIALS.
 3. THE CONTRACTOR SHALL BE RESPONSIBLE FOR OBTAINING ANY AND ALL PERMITS AND SHALL PAY ALL FEES NECESSARY FOR ENCROACHMENT, GRADING, DEMOLITION AND DISPOSAL OF SAID MATERIALS AS REQUIRED BY PRIVATE, LOCAL AND STATE JURISDICTIONS.
 4. THE CONTRACTOR SHALL BE RESPONSIBLE FOR A SITE INSPECTION TO FULLY ACKNOWLEDGE THE EXTENT OF THE DEMOLITION WORK.
 5. THE CONTRACTOR SHALL VERIFY AND LOCATE ALL EXISTING ABOVE AND UNDERGROUND UTILITIES. LOCATIONS SHOWN ON THE PLANS ARE APPROXIMATE AND ARE SHOWN FOR GENERAL INFORMATION ONLY.
 6. DAMAGE TO ANY EXISTING UTILITIES AND SERVICES TO REMAIN SHALL BE THE RESPONSIBILITY OF THE CONTRACTOR. CONTRACTOR SHALL REPAIR AND/OR REPLACE IN KIND.
 7. EROSION CONTROL MEASURES SHALL BE IMPLEMENTED TO PREVENT DEBRIS AND UNSUITABLE MATERIALS FROM ENTERING STORM DRAINS, SANITARY SEWERS AND STREETS.
 8. DUST CONTROL SHALL BE IMPLEMENTED DURING DEMOLITION.
 9. DEMOLITION IS LIMITED TO WITHIN DEMOLITION LIMIT LINE UNLESS NOTED OTHERWISE.
 10. THE CONTRACTOR SHALL ADJUST TO GRADE ALL EXISTING UTILITY STRUCTURE TO REMAIN.

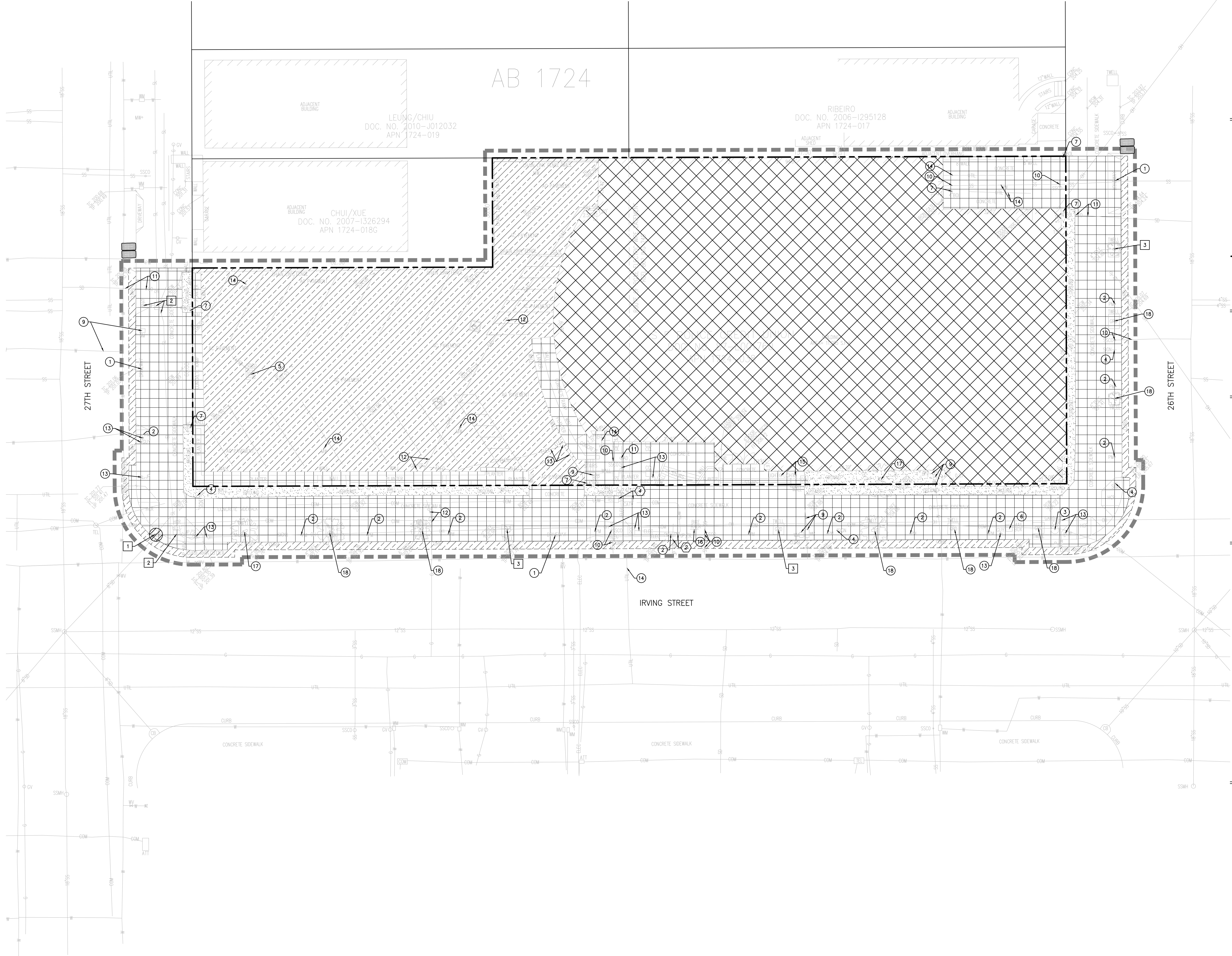
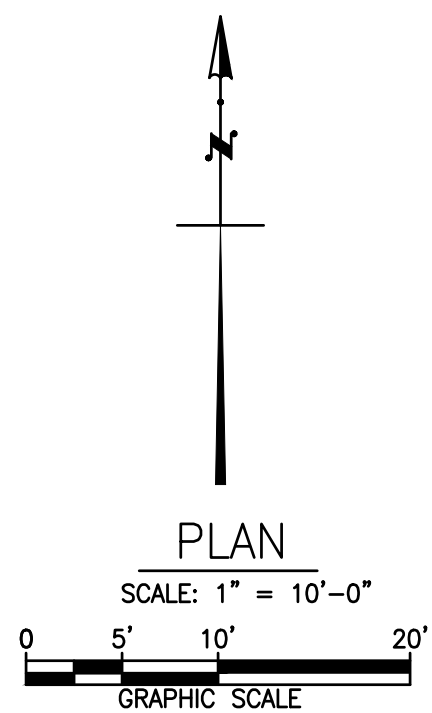
- DEMOLITION LEGEND:
- | | |
|--|-----------------------------|
| | CONCRETE HARDSCAPE REMOVAL |
| | ASPHALT CONCRETE REMOVAL |
| | DEMOLISH BUILDING/STRUCTURE |
| | CLEAR AND GRUB |
| | SAWCUT EXISTING PAVEMENT |
| | LIMIT OF WORK |
| | PROPERTY LINE |

- EROSION LEGEND:
- | | |
|--|---|
| | CURB GUTTER CONTAINMENT –
SEE DETAIL 1, SHEET C1.2 |
| | DRAIN INLET PROTECTION –
SEE DETAIL 2, SHEET C1.2 |

- PROTECT IN PLACE:
- | | |
|---|--|
| 1 | CATCH BASIN |
| 2 | ELECTRICAL VAULT, POLE, GUY WIRE, STREET LIGHTS, CONDUITS, AND APPURTENANCES |
| 3 | TREE |

- REMOVE/DEMOLISH:
- | | |
|----|--|
| 1 | CURB AND DRIVEWAY CURB CUTS |
| 2 | PARKING METER |
| 3 | GARBAGE CAN |
| 4 | SIGN |
| 5 | STORM DRAIN STRUCTURE |
| 6 | MAIL BOX |
| 7 | BOLLARD |
| 8 | FENCE |
| 9 | WATER LINE, STRUCTURE, AND APPURTENANCES |
| 10 | SANITARY SEWER LINE, STRUCTURE, AND APPURTENANCES |
| 11 | STORM DRAIN LINE, STRUCTURE, AND APPURTENANCES |
| 12 | GAS CONDUIT, STRUCTURE, AND APPURTENANCES |
| 13 | ELECTRICAL CONDUIT, STRUCTURE, AND APPURTENANCES |
| 14 | UNKNOWN UTILITY LINE, STRUCTURE, AND APPURTENANCES |
| 15 | LIGHTS |
| 16 | BIKE RACK |
| 17 | TREE |
| 18 | REMOVE AND REPLACE TREE |

- SALVAGE, RELOCATE
- | | |
|---|---|
| 1 | NOT USED |
| 2 | RELOCATE STREETLIGHT, BOX, CONDUITS, APPURTENANCES, OUT OF ELECTRICAL TRANSFORMER EXTENTS |
| 3 | RELOCATE CATV PULLBOX OUT OF CURB RAMP EXTENTS |
| 4 | RELOCATE CATV AND TEL BOX OUT OF CLEAR SPACE FOR LOADING ZONE |



1. THIS PLAN MAY NOT COVER ALL THE SITUATIONS OR PHASES THAT ARISE DURING CONSTRUCTION DUE TO UNANTICIPATED FIELD CONDITIONS. IN GENERAL, THE CONTRACTOR IS RESPONSIBLE FOR KEEPING SEDIMENT STORM RUNOFF FROM LEAVING THE SITE. SEDIMENT ROLLS AND SILT FENCES SHALL BE USED BY THE CONTRACTOR ON AN AS NEEDED BASIS TO INHIBIT SILT FROM LEAVING THE SITE AND ENTERING THE STORM DRAIN SYSTEM. TEMPORARY EROSION CONTROL DEVICES SHOWN ON GRADING PLAN WHICH INTERFERE WITH THE WORK SHALL BE RELOCATED OR MODIFIED WHEN THE INSPECTOR SO DIRECTS AS THE WORK PROGRESSES.

2. EROSION CONTROL FACILITIES SHALL BE MAINTAINED DAILY. THESE FACILITIES SHALL CONTROL AND CONTAIN EROSION-CAUSED SILT DEPOSITS AND PROVIDE FOR THE SAFE DISCHARGE OF SILT FREE STORM WATER INTO EXISTING AND PROPOSED STORM DRAIN FACILITIES. DESIGN OF THESE FACILITIES MUST BE APPROVED AND UPDATED EACH YEAR BY THE ENGINEER (OCTOBER 1 TO APRIL 15).

3. ALL EROSION AND SEDIMENT CONTROL MEASURES SHALL BE CONSTRUCTED AND MAINTAINED IN ACCORDANCE WITH THE PROVISIONS OF THE ENGINEERING DIVISION OF THE PUBLIC SERVICES DEPARTMENT OR CITY OF SAN FRANCISCO DEPARTMENT OF PUBLIC WORKS. CONTROL MEASURES ARE SUBJECT TO THE INSPECTION AND APPROVAL OF THE ENGINEERING DIVISION OF THE PUBLIC SERVICES DEPARTMENT OR CITY OF SAN FRANCISCO DEPARTMENT OF PUBLIC WORKS.

4. THE CONTRACTOR IS RESPONSIBLE FOR ENSURING THAT ALL SUB-CONTRACTORS AND SUPPLIERS ARE AWARE OF ALL STORM WATER QUALITY MEASURES & IMPLEMENT SUCH MEASURES. FAILURE TO COMPLY WITH THE APPROVED CONSTRUCTION WILL RESULT IN THE ISSUANCE OF CORRECTION NOTICES, CITATIONS, AND/OR A PROJECT STOP ORDER.

5. THE SITE SHALL BE MAINTAINED SO AS TO MINIMIZE SEDIMENT LADEN RUNOFF TO ANY STORM DRAIN SYSTEM.

6. IF EXISTING DRIVEWAY IS REMOVED DURING CONSTRUCTION, THE CONTRACTOR SHALL PLACE DRAIN ROCK AS A GRAVEL ROADWAY (8" MINIMUM THICKNESS FOR THE FULL WIDTH AND LENGTH OF SITE EGRESS AREA AS DEFINED IN THESE PLANS) AT ENTRANCE TO THE SITE. LOCATION TO BE APPROVED BY CITY ENGINEER IN THE FIELD. CONSTRUCTION EGRESS SHALL BE EQUIPPED WITH A TRUCK WASHING STATION. ALL TRUCKS SHALL WASH TIRES AND UNDERSIDE OF VEHICLES AS APPROPRIATE WHEN LEAVING THE SITE. ANY MUD THAT IS TRACKED ONTO PUBLIC STREETS SHALL BE REMOVED THE SAME DAY AS REQUIRED BY THE CITY ENGINEER.

7. DURING THE RAINY SEASON, ALL PAVED AREAS ARE TO BE KEPT CLEAR OF EARTH MATERIAL AND DEBRIS. THE SITE IS TO BE MAINTAINED SO AS TO MINIMIZE SEDIMENT RUNOFF TO ANY STORM DRAIN SYSTEM.

8. DURING PERIODS WHEN STORMS ARE FORECAST:

A. EXCAVATED SOILS SHOULD NOT BE PLACED IN STREETS OR ON PAVED AREAS.

B. ANY EXCAVATED SOILS SHOULD BE REMOVED FROM THE SITE BY THE END OF THE DAY.

C. WHERE STOCKPILING IS NECESSARY, USE A TARPULIN OR SURROUND THE STOCKPILED MATERIAL WITH FIBER ROLLS, GRAVEL, SEDIMENT BARRIER, SILT FENCE, OR OTHER RUNOFF CONTROLS.

D. USE INLET CONTROLS AS NEEDED (E.G. BLOCK & GRAVEL, SEDIMENT BARRIER) FOR STORM DRAIN ADJACENT TO THE PROJECT SITE OR STOCKPILED SOIL.

9. THOROUGHLY SWEEP ALL PAVED AREAS EXPOSED TO SOIL EXCAVATION AND PLACEMENT.

10. STAND-BY CREWS SHALL BE ALERTED BY THE PERMIT APPLICANT OR CONTRACTOR FOR EMERGENCY WORK DURING RAINSTORMS.

11. AFTER OCTOBER 1ST TO APRIL 15TH, ALL EROSION CONTROL MEASURES WILL BE INSPECTED DAILY AND AFTER EACH STORM. BREACHES IN DIKES AND TEMPORARY SWALES WILL BE REPAIRED AT THE CLOSE OF EACH DAY AND WHENEVER RAIN IS FORECAST.

12. AS A PART OF THE EROSION CONTROL MEASURES, UNDERGROUND STORM DRAIN FACILITIES SHALL BE INSTALLED COMPLETE AS SHOWN ON THE IMPROVEMENT PLANS.

13. BORROW AREAS AND TEMPORARY STOCKPILES SHALL BE PROTECTED WITH APPROPRIATE EROSION CONTROL MEASURES TO THE SATISFACTION OF THE CITY ENGINEER.

14. SANDBAGS SHALL BE STOCKPILED ON SITE AND PLACED AT INTERVALS SHOWN ON EROSION CONTROL PLANS, WHEN THE RAIN FORECAST IS 40% OR GREATER, OR WHEN DIRECTED BY THE INSPECTOR.

15. SANDBAGS REFERRED TO IN THE PRECEDING ITEMS MUST BE FULL APPROVED SANDBAG FILL MATERIALS ARE SAND, DECOMPOSED GRANITE AND/OR GRAVEL, OR OTHER MATERIALS APPROVED BY THE INSPECTOR.

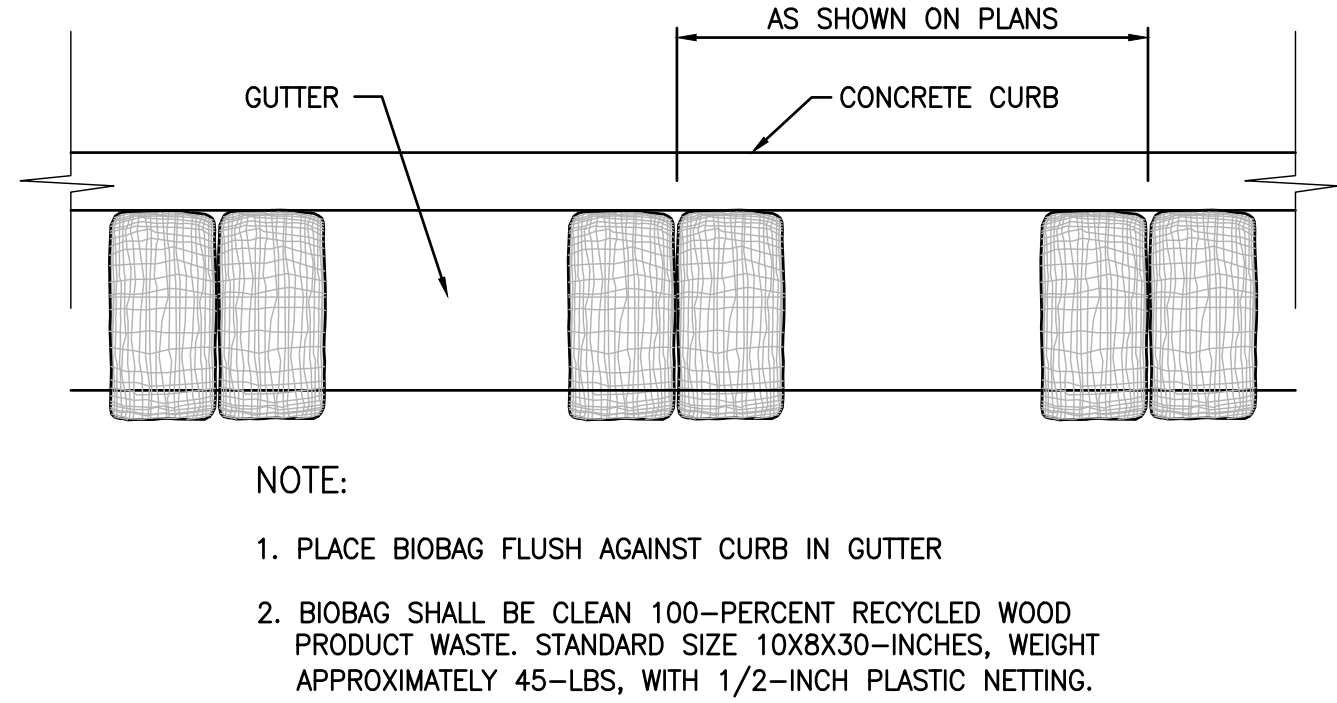
16. CONTRACTOR SHALL BE RESPONSIBLE FOR ENSURING SAFETY OF VEHICLES OPERATING IN THE ROADWAY ADJACENT TO EROSION CONTROL FACILITIES.

17. AFTER RAINSTORMS CONTRACTOR SHALL CHECK FOR AND REMOVE SEDIMENT TRAPPED BY SAND BAGS AT STAGING AREA. REPLACE SAND BAGS IF DETRIORATION IS EVIDENT.

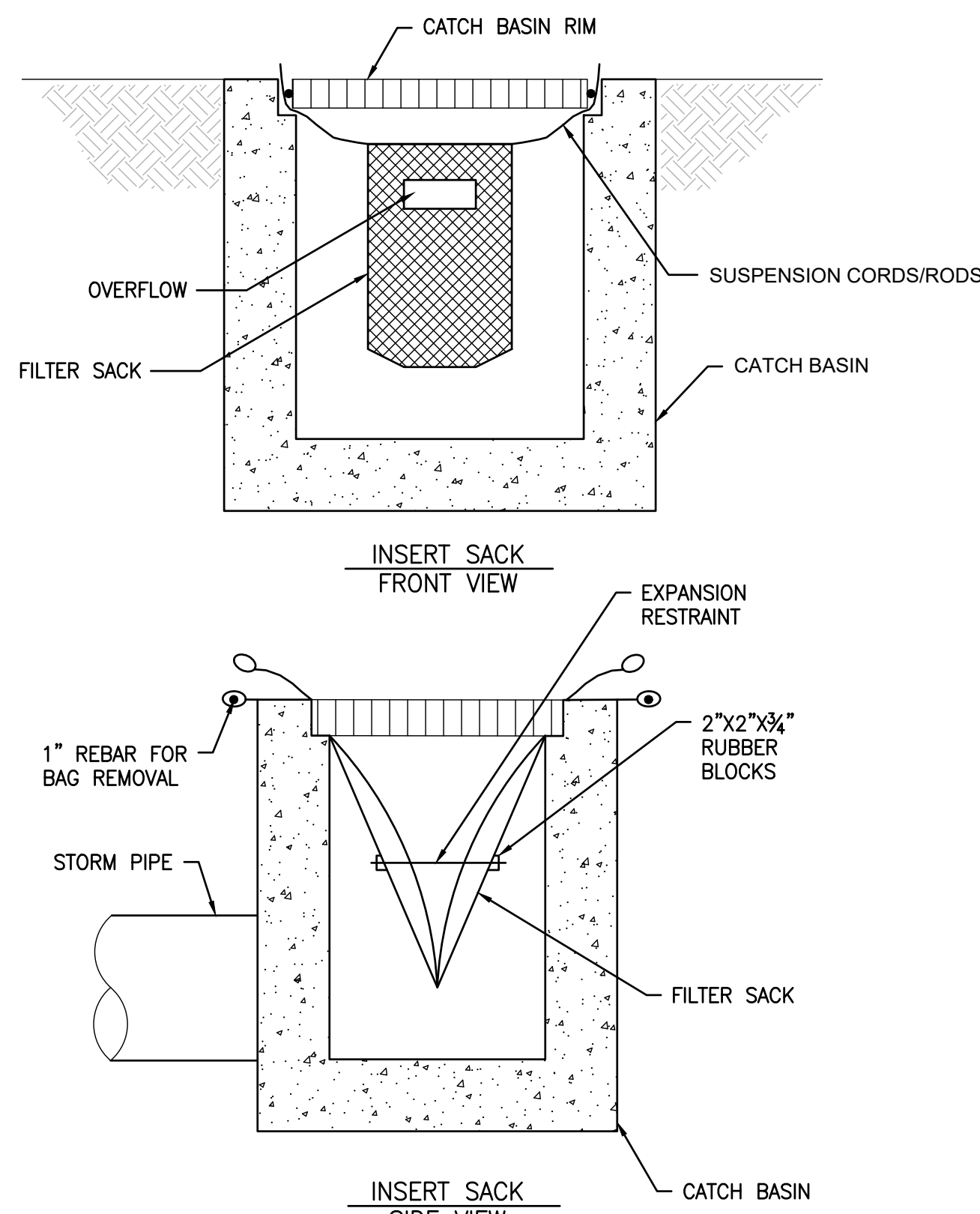
18. DUST CONTROL SHOULD BE PRACTICED ON ALL CONSTRUCTION SITES WITH EXPOSED SOILS AS NEEDED. IT IS IMPORTANT IN WINDY OR WIND-PRONE AREAS. DUST CONTROL IS CONSIDERED A TEMPORARY MEASURE AND AS AN INTERMEDIATE TREATMENT BETWEEN SITE DISTURBANCE AND CONSTRUCTION, PAVING, OR REVEGETATION. REFER TO EROSION CONTROL AND SEDIMENT CONTROL FIELD MANUAL, 3RD EDITION, PREPARED BY THE CALIFORNIA REGIONAL WATER QUALITY CONTROL BOARD, SAN FRANCISCO BAY REGION.
1. THE BUREAU OF ENVIRONMENTAL REGULATION AND MANAGEMENT MUST BE NOTIFIED 48 HOURS PRIOR TO COMMENCEMENT OF CONSTRUCTION.

2. REVIEW AND/OR APPROVAL OF THE EROSION CONTROL PLAN SHOULD NOT RELIEVE THE CONTRACTOR FROM HIS OR HER RESPONSIBILITIES WITH THE REQUIREMENTS OF THE CONSTRUCTION SITE RUNOFF CONTROL ORDINANCE, NOR SHOULD AN APPROVED EROSION CONTROL PLAN RELIEVE THE CONTRACTOR FROM ERRORS OR OMISSIONS IN THE APPROVED PLAN.

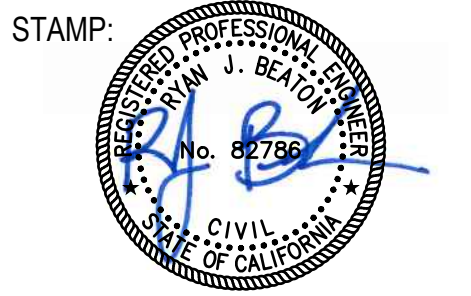
3. IF THE APPROVED PLAN NEEDS TO BE MODIFIED ADDITIONAL SEDIMENT AND STORMWATER CONTROL MEASURES MAY BE REQUIRED AS DEEMED NECESSARY BY THE SFPUC.
1. _____ CERTIFY THAT ALL LAND CLEARING, CONSTRUCTION AND DEVELOPMENT SHALL BE DONE PURSUANT TO THE APPROVED PLAN.



1 CURB GUTTER CONTAINMENT
N.T.S.



2 DRAIN INLET PROTECTION
N.T.S.



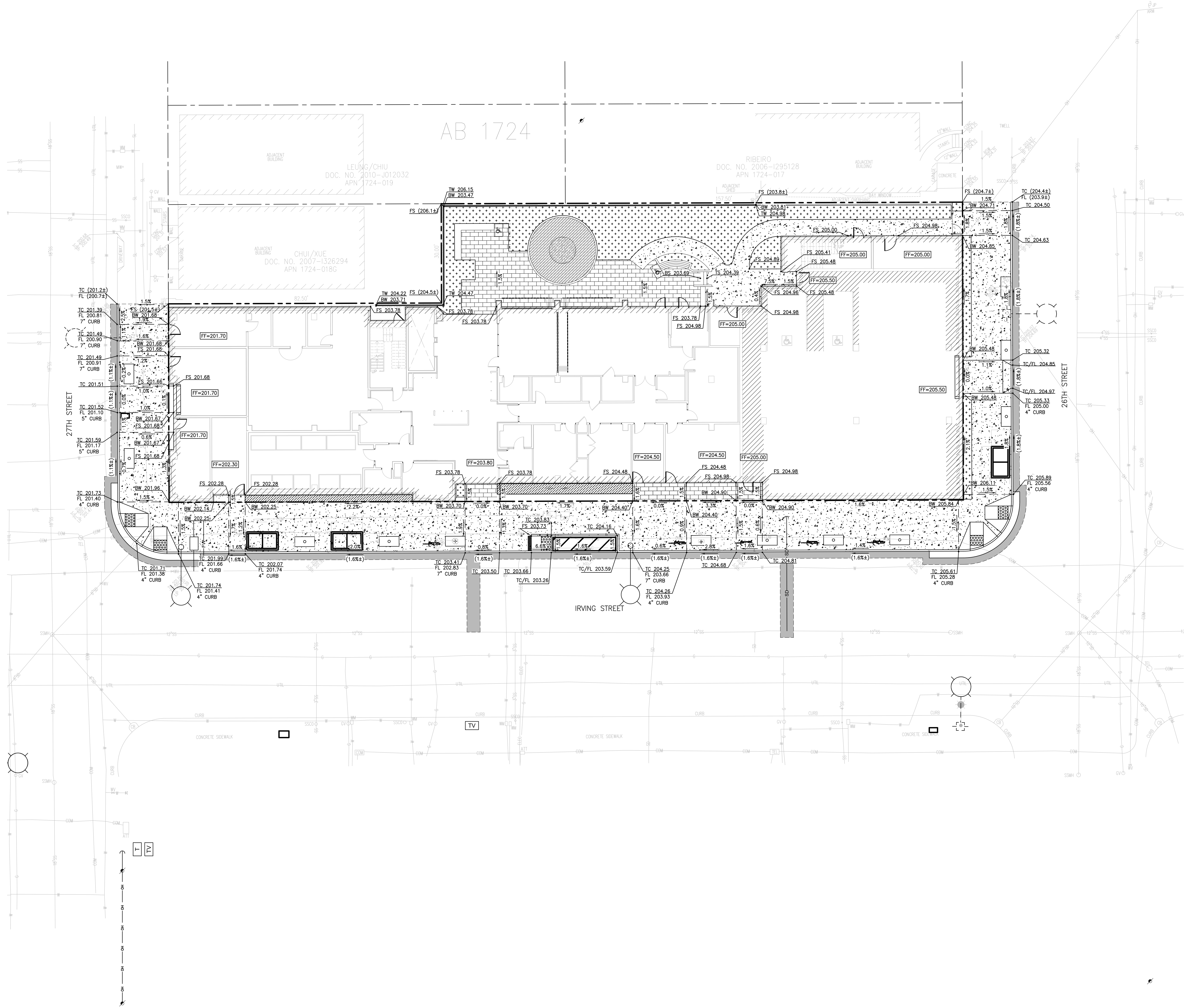
REVISION SCHEDULE	
NO. ISSUE	DATE

JOB NUMBER:	1941
DRAWN BY:	JK
CHECKED BY:	RB
ISSUE DATE:	4/27/2022
SCALE:	PER PLAN

TITLE:
EROSION CONTROL PLAN NOTES

SHEET:

C1.2



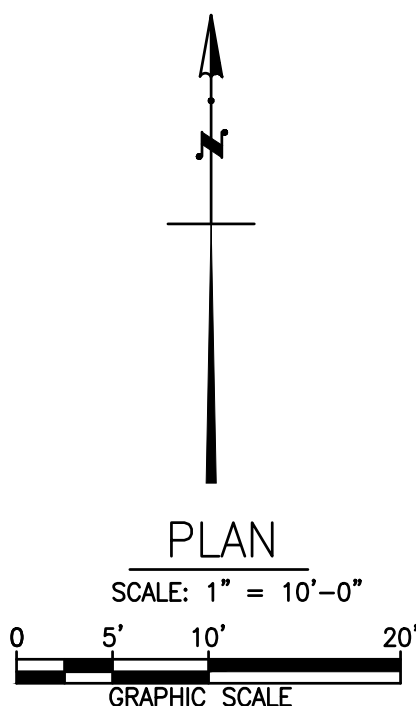
- GRADING GENERAL NOTES:
1. PROVIDE STRAIGHT LINE GRADING BETWEEN SPOT ELEVATIONS AND CONTOUR LINES.
 2. SURFACE CROSS SLOPES OF SIDEWALKS SHALL NOT EXCEED 2%.
 3. COORDINATE WITH ARCHITECT/LANDSCAPE ARCHITECT PLAN FOR SIDEWALK FINISH.
 4. ELEVATIONS SHOWN ARE TO TOP OF PAVEMENT, UNLESS NOTED OTHERWISE.
 5. ADJUST ALL UTILITY VAULTS AND LIDS WITHIN THE WORK AREA TO MATCH THE NEW PAVEMENT AND FINISHED GRADE ELEVATIONS AND SLOPES.
 6. FOR EXTERIOR LANDINGS, SEE WATERPROOFING DRAWINGS, SEE ARCHITECTURE DRAWINGS.
 7. UNLESS OTHERWISE SPECIFIED, THE NOMINAL SPECIFIED HEIGHT OF CURB MEASURED FROM GUTTER TO TOP OF CURB SHALL BE 6".

LEGEND:

FS 12.00	PROPOSED ELEVATION
(EG 12.00)	EXISTING ELEVATION
1.0%	PROPOSED SLOPE
(1.0%)	EXISTING SLOPE
•	CONFORM TO EXISTING PAVEMENT GRADE
[Pattern]	2" ASPHALT OVER 6" CONCRETE PER CITY AND COUNTY STANDARDS
[Pattern]	4" CONCRETE SIDEWALK PER CITY AND COUNTY STANDARDS
---	GRADE BREAK
---	PROPERTY LINE
[Pattern]	BUILDING FACE

ABBREVIATIONS:

AD	AREA DRAIN
BS	BOTTOM OF STEP
BW	BACK OF WALK
CS	COMBINED SYSTEM
EXIST. OR EX.	EXISTING
FF	FINISHED FLOOR
FL	FLOW LINE
FS	FINISHED SURFACE
SDCO	STORM DRAIN CLEANOUT
SS	SANITARY SEWER
SSCO	SANITARY SEWER CLEANOUT
TC	TOP OF CURB
TW	TOP OF WALL
VF	VERIFY IN FIELD

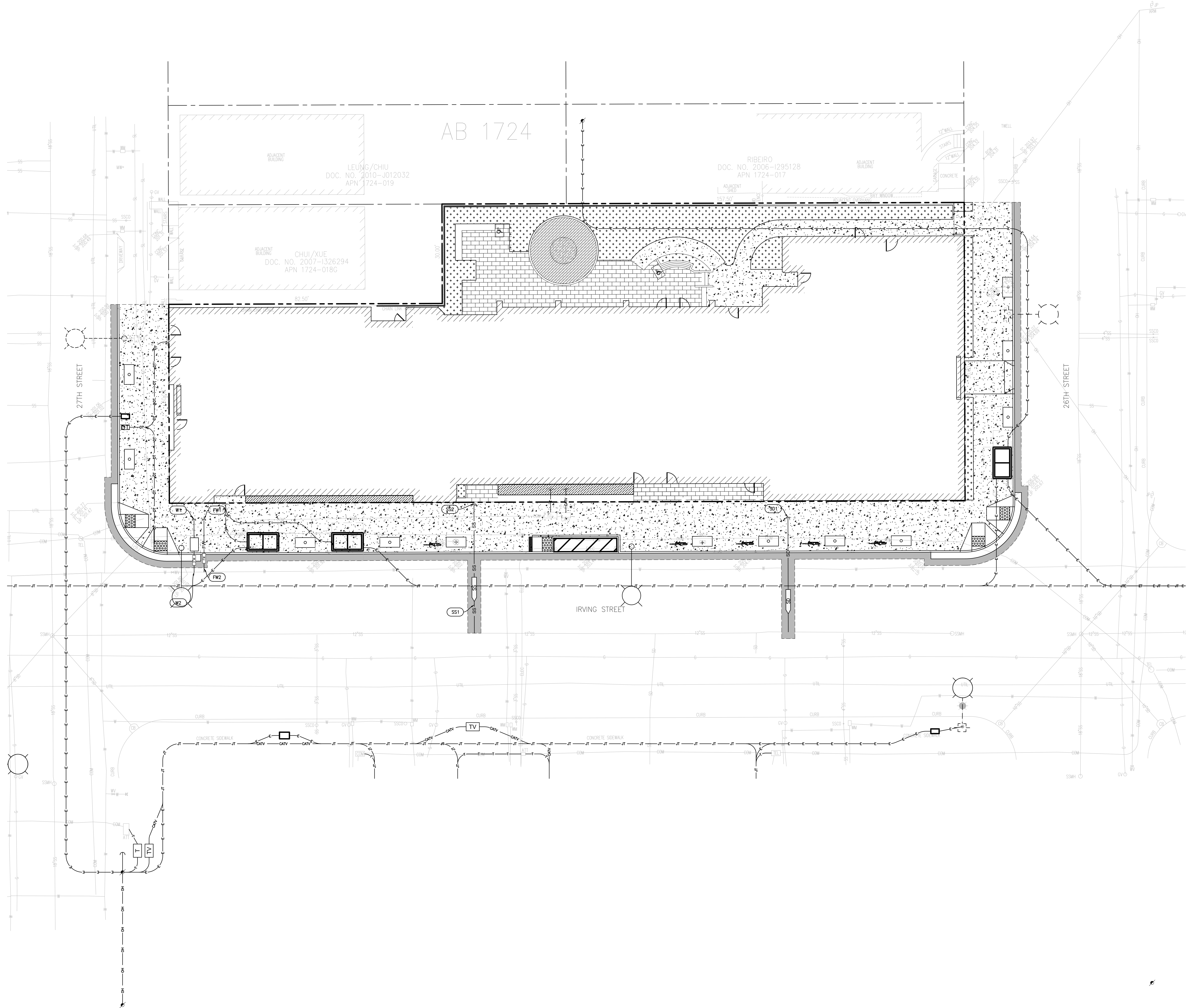


REVISION SCHEDULE
NO. | ISSUE | DATE

JOB NUMBER: 1941
DRAWN BY: JK
CHECKED BY: RB
ISSUE DATE: 4/27/2022
SCALE: PER PLAN
TITLE:
GRADING AND DRAINAGE PLAN

SHEET:

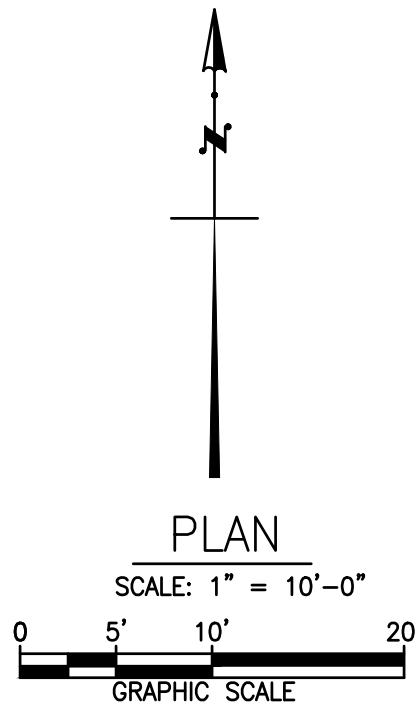
C3.1



- UTILITY NOTES:
- EXISTING UTILITIES SHOWN FOR INFORMATION ONLY.
 - PRIOR TO CONSTRUCTION, CONTRACTOR SHALL POTHOLE EXISTING SEWER CONNECTION(S) TO CONFIRM EXISTING INVERT ELEVATION IS AT, OR BELOW, THE PROPOSED CONNECTION ELEVATION. CONTRACTOR SHALL NOTIFY ENGINEER OF ANY DISCREPANCIES.
 - WATER/SEWER CROSSINGS SHALL MAINTAIN 12" MINIMUM VERTICAL CLEARANCE.
 - SEE DETAIL 3 - SHEET C5.1 FOR UTILITY TRENCHING DETAIL.
 - CONTRACTOR SHALL BE RESPONSIBLE FOR TRENCH PATCHING PAVEMENT WHERE TRENCHES EXTEND INTO THE PUBLIC RIGHT-OF-WAY.

- LEGEND:
- | | |
|------|--|
| --- | PROPERTY LINE |
| —W— | DIP DOMESTIC WATER LINE, SIZE PER PLAN |
| —FW— | DIP FIRE WATER LINE, SIZE PER PLAN |
| —SS— | VCP SANITARY SEWER LATERAL, SIZE PER PLAN |
| —SD— | VCP STORM DRAIN LATERAL, SIZE PER PLAN |
| —E— | ELECTRICAL LINE, SEE JOINT TRENCH PLANS |
| —JT— | JOINT TRENCH, SEE JOINT TRENCH PLANS |
| —T— | TELECOM LINE, SEE JOINT TRENCH PLANS |
| ⌵ | FIRE DEPARTMENT CONNECTION |
| ⊗ | TYTON JOINT DUCTILE IRON TAPPING GATE VALVE PER PLAN CDD-LP-203A |
| WM | 3" WATER METER - CDD TO INSTALL PER PLAN CDD-LP-203D |
| Av | AIR VENT AND TRAP |

- KEY NOTES:
- SS1 INSTALL SANITARY SEWER LATERAL PER SFDPW STANDARD 87,196
 - SS2 STUB SANITARY SEWER LATERAL 5' FROM FACE OF BUILDING. SEE PLUMBING PLANS FOR CONNECTION TO BUILDING SERVICE.
 - SD1 STUB STORM DRAIN LATERAL 5' FROM FACE OF BUILDING. SEE PLUMBING PLANS FOR CONNECTION TO BUILDING SERVICE.
 - W1 STUB DOMESTIC WATER LINE 5' FROM FACE OF BUILDING. SEE PLUMBING PLANS FOR CONNECTION TO BUILDING SERVICE.
 - W2 INSTALL PER CDD PLAN LP-203 A/B. CONTRACTOR TO COORDINATE WATER SERVICE INSTALLATION WITH CDD/SFDPW. CDD TO INSTALL WATER LATERAL, METER, AND STUB PAST METER.
 - FW1 STUB FIRE WATER LINE 5' FROM FACE OF BUILDING. SEE FIRE SPRINKLER PLANS FOR CONNECTION TO BUILDING SERVICE.
 - FW2 INSTALL PER CDD PLAN LP-203 A/B. CONTRACTOR TO COORDINATE WATER SERVICE INSTALLATION WITH CDD/SFDPW. CDD TO INSTALL WATER LATERAL 2' PAST CURB FACE.



REVISION SCHEDULE	DATE
NO. ISSUE	DATE

JOB NUMBER:	1941
DRAWN BY:	JK
CHECKED BY:	RB
ISSUE DATE:	4/27/2022
SCALE:	PER PLAN
TITLE:	UTILITY PLAN