

Location: User-specified polygonal location  
 Ring (buffer): 0-mile radius  
 Description: 106 South Park

Summary of ACS Estimates		2013 - 2017	
Population			676
Population Density (per sq. mile)			10,935
Minority Population			298
% Minority			44%
Households			500
Housing Units			549
Housing Units Built Before 1950			130
Per Capita Income			81,763
Land Area (sq. miles) (Source: SF1)			0.06
% Land Area			100%
Water Area (sq. miles) (Source: SF1)			0.00
% Water Area			0%

	2013 - 2017 ACS Estimates	Percent	MOE (±)
<b>Population by Race</b>			
Total	676	100%	272
Population Reporting One Race	610	90%	508
White	378	56%	215
Black	86	13%	102
American Indian	0	0%	12
Asian	131	19%	146
Pacific Islander	5	1%	11
Some Other Race	10	1%	22
Population Reporting Two or More Races	66	10%	74
Total Hispanic Population	10	1%	22
Total Non-Hispanic Population	666		
White Alone	378	56%	215
Black Alone	86	13%	102
American Indian Alone	0	0%	12
Non-Hispanic Asian Alone	131	19%	146
Pacific Islander Alone	5	1%	11
Other Race Alone	0	0%	12
Two or More Races Alone	66	10%	74
<b>Population by Sex</b>			
Male	475	70%	243
Female	201	30%	151
<b>Population by Age</b>			
Age 0-4	0	0%	12
Age 0-17	38	6%	60
Age 18+	638	94%	280
Age 65+	0	0%	12

**Data Note:** Detail may not sum to totals due to rounding. Hispanic population can be of any race.

N/A means not available. **Source:** U.S. Census Bureau, American Community Survey (ACS) 2013 - 2017

Location: User-specified polygonal location

Ring (buffer): 0-mile radius

Description: 106 South Park

	2013 - 2017 ACS Estimates	Percent	MOE (±)
<b>Population 25+ by Educational Attainment</b>			
Total	585	100%	257
Less than 9th Grade	0	0%	12
9th - 12th Grade, No Diploma	93	16%	83
High School Graduate	101	17%	102
Some College, No Degree	78	13%	97
Associate Degree	0	0%	12
Bachelor's Degree or more	313	54%	206
<b>Population Age 5+ Years by Ability to Speak English</b>			
Total	676	100%	272
Speak only English	545	81%	241
Non-English at Home <sup>1+2+3+4</sup>	131	19%	107
<sup>1</sup> Speak English "very well"	54	8%	66
<sup>2</sup> Speak English "well"	38	6%	60
<sup>3</sup> Speak English "not well"	39	6%	61
<sup>4</sup> Speak English "not at all"	0	0%	12
<sup>3+4</sup> Speak English "less than well"	39	6%	61
<sup>2+3+4</sup> Speak English "less than very well"	77	11%	85
<b>Linguistically Isolated Households*</b>			
Total	39	100%	61
Speak Spanish	0	0%	12
Speak Other Indo-European Languages	0	0%	12
Speak Asian-Pacific Island Languages	39	100%	60
Speak Other Languages	0	0%	12
<b>Households by Household Income</b>			
Household Income Base	500	100%	208
< \$15,000	219	44%	155
\$15,000 - \$25,000	91	18%	109
\$25,000 - \$50,000	0	0%	12
\$50,000 - \$75,000	0	0%	12
\$75,000 +	190	38%	156
<b>Occupied Housing Units by Tenure</b>			
Total	500	100%	208
Owner Occupied	54	11%	88
Renter Occupied	446	89%	192
<b>Employed Population Age 16+ Years</b>			
Total	638	100%	266
In Labor Force	322	50%	196
Civilian Unemployed in Labor Force	0	0%	12
Not In Labor Force	316	50%	175

**Data Note:** Detail may not sum to totals due to rounding. Hispanic population can be of anyrace.

N/A means not available. **Source:** U.S. Census Bureau, American Community Survey (ACS)

\*Households in which no one 14 and over speaks English "very well" or speaks English only.

Location: User-specified polygonal location

Ring (buffer): 0-mile radius

Description: 106 South Park

	2013 - 2017 ACS Estimates	Percent	MOE (±)
<b>Population by Language Spoken at Home*</b>			
Total (persons age 5 and above)	933	100%	1,377
English	589	63%	1,283
Spanish	35	4%	307
French	13	1%	482
French Creole	N/A	N/A	N/A
Italian	N/A	N/A	N/A
Portuguese	N/A	N/A	N/A
German	14	1%	171
Yiddish	N/A	N/A	N/A
Other West Germanic	N/A	N/A	N/A
Scandinavian	N/A	N/A	N/A
Greek	N/A	N/A	N/A
Russian	N/A	N/A	N/A
Polish	N/A	N/A	N/A
Serbo-Croatian	N/A	N/A	N/A
Other Slavic	N/A	N/A	N/A
Armenian	N/A	N/A	N/A
Persian	N/A	N/A	N/A
Gujarathi	N/A	N/A	N/A
Hindi	N/A	N/A	N/A
Urdu	N/A	N/A	N/A
Other Indic	N/A	N/A	N/A
Other Indo-European	68	7%	489
Chinese	110	12%	664
Japanese	N/A	N/A	N/A
Korean	8	1%	123
Mon-Khmer, Cambodian	N/A	N/A	N/A
Hmong	N/A	N/A	N/A
Thai	N/A	N/A	N/A
Laotian	N/A	N/A	N/A
Vietnamese	11	1%	178
Other Asian	27	3%	256
Tagalog	5	1%	97
Other Pacific Island	N/A	N/A	N/A
Navajo	N/A	N/A	N/A
Other Native American	N/A	N/A	N/A
Hungarian	N/A	N/A	N/A
Arabic	0	0%	19
Hebrew	N/A	N/A	N/A
African	N/A	N/A	N/A
Other and non-specified	38	4%	540
Total Non-English	344	37%	1,882

**Data Note:** Detail may not sum to totals due to rounding. Hispanic population can be of any race.

N/A means not available. **Source:** U.S. Census Bureau, American Community Survey (ACS) 2013 - 2017.

\*Population by Language Spoken at Home is available at the census tract summary level and up.

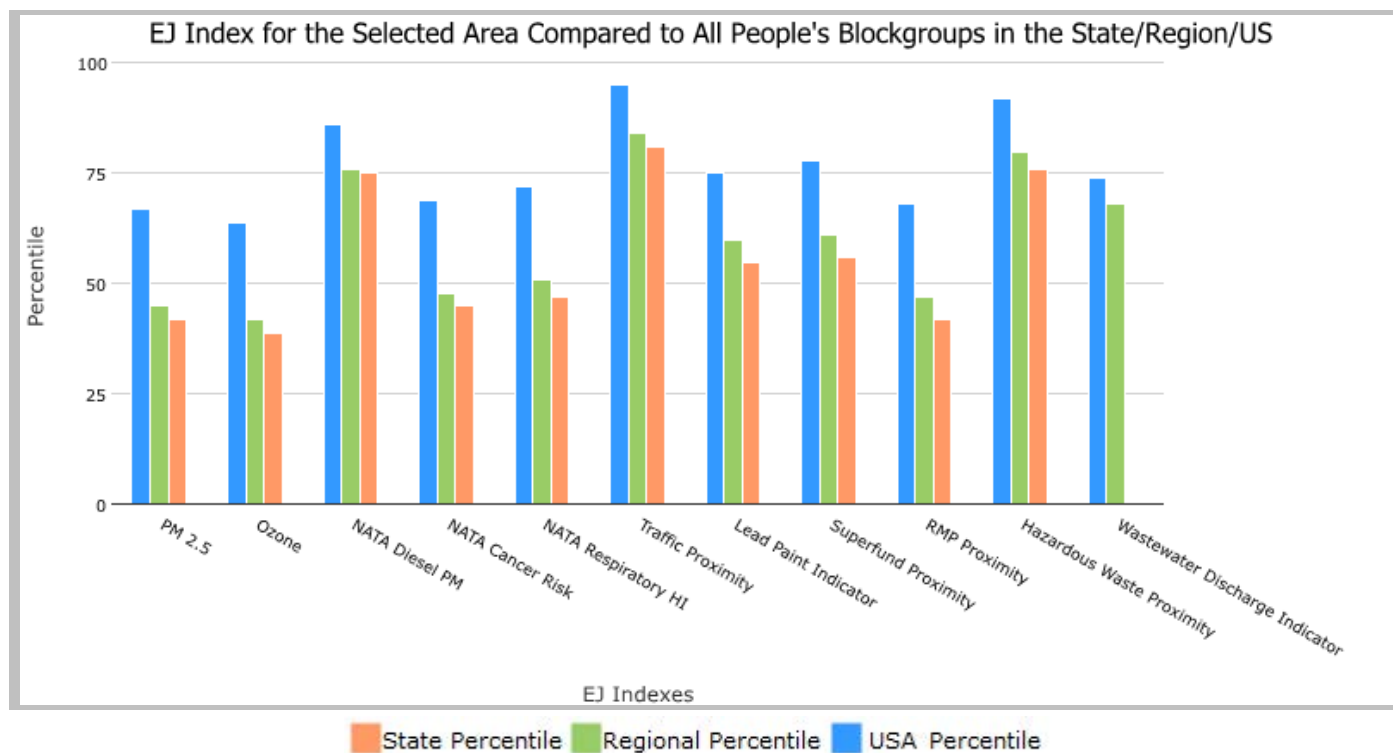
Blockgroup: 060750615005, CALIFORNIA, EPA Region 9

Approximate Population: 676

Input Area (sq. miles): 0.06

106 South Park

Selected Variables	State Percentile	EPA Region Percentile	USA Percentile
<b>EJ Indexes</b>			
EJ Index for PM2.5	42	45	67
EJ Index for Ozone	39	42	64
EJ Index for NATA* Diesel PM	75	76	86
EJ Index for NATA* Air Toxics Cancer Risk	45	48	69
EJ Index for NATA* Respiratory Hazard Index	47	51	72
EJ Index for Traffic Proximity and Volume	81	84	95
EJ Index for Lead Paint Indicator	55	60	75
EJ Index for Superfund Proximity	56	61	78
EJ Index for RMP Proximity	42	47	68
EJ Index for Hazardous Waste Proximity	76	80	92
EJ Index for Wastewater Discharge Indicator	N/A	68	74



This report shows the values for environmental and demographic indicators and EJSCREEN indexes. It shows environmental and demographic raw data (e.g., the estimated concentration of ozone in the air), and also shows what percentile each raw data value represents. These percentiles provide perspective on how the selected block group or buffer area compares to the entire state, EPA region, or nation. For example, if a given location is at the 95th percentile nationwide, this means that only 5 percent of the US population has a higher block group value than the average person in the location being analyzed. The years for which the data are available, and the methods used, vary across these indicators. Important caveats and uncertainties apply to this screening-level information, so it is essential to understand the limitations on appropriate interpretations and applications of these indicators. Please see EJSCREEN documentation for discussion of these issues before using reports.

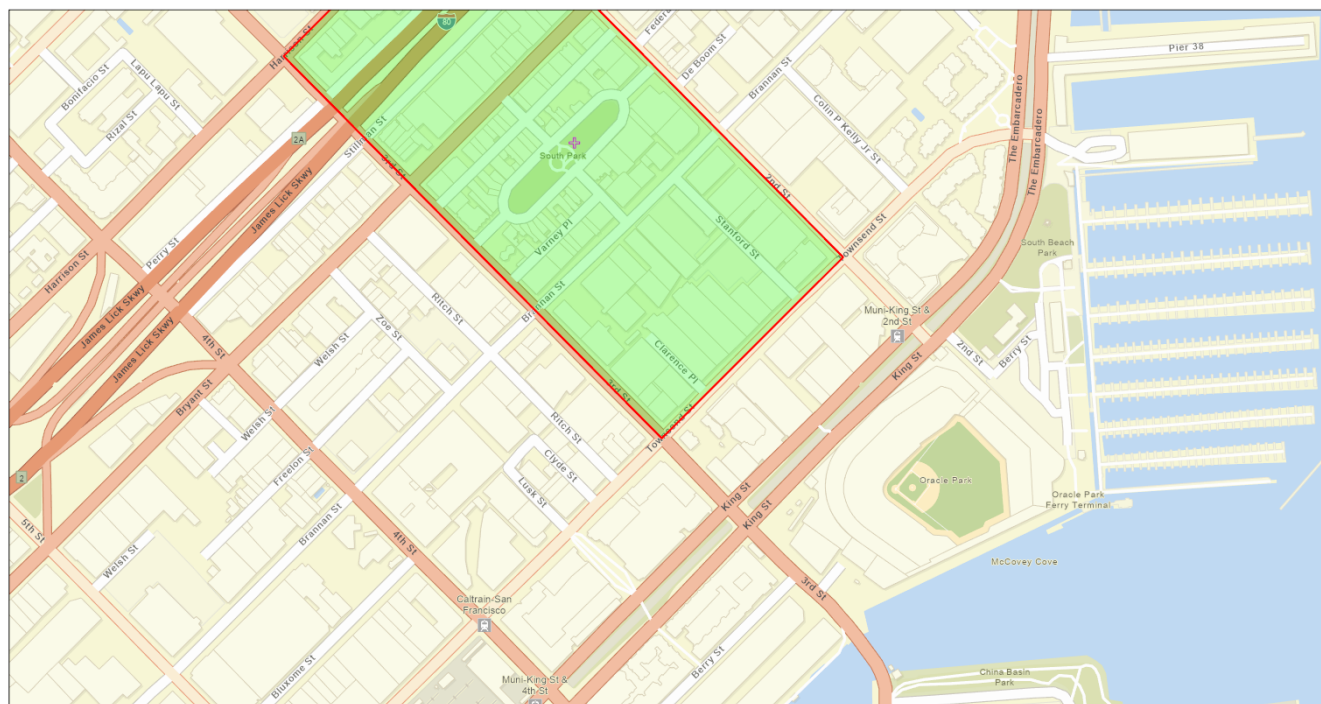


**Blockgroup: 060750615005, CALIFORNIA, EPA Region 9**

**Approximate Population: 676**

**Input Area (sq. miles): 0.06**

**106 South Park**



January 28, 2020

106 South Park  
Project 1

14,514  
0 0.04 0.09 0.18 mi  
0 0.05 0.1 0.2 km

Sources: Esri, HERE, Garmin, FAO, NOAA, USGS, OpenStreetMap contributors, and the GIS User Community

#### Sites reporting to EPA

Superfund NPL

0

Hazardous Waste Treatment, Storage, and Disposal Facilities (TSDF)

0

## EJSCREEN Report (Version 2019)

Blockgroup: 060750615005, CALIFORNIA, EPA Region 9

Approximate Population: 676

Input Area (sq. miles): 0.06

106 South Park

Selected Variables	Value	State Avg.	%ile in State	EPA Region Avg.	%ile in EPA Region	USA Avg.	%ile in USA
<b>Environmental Indicators</b>							
Particulate Matter (PM 2.5 in $\mu\text{g}/\text{m}^3$ )	8.07	9.78	25	9.21	36	8.3	40
Ozone (ppb)	26.8	48.2	0	48.9	0	43	0
NATA* Diesel PM ( $\mu\text{g}/\text{m}^3$ )	2.34	0.468	99	0.479	95-100th	0.479	95-100th
NATA* Cancer Risk (lifetime risk per million)	40	36	70	35	60-70th	32	80-90th
NATA* Respiratory Hazard Index	0.72	0.55	91	0.53	90-95th	0.44	95-100th
Traffic Proximity and Volume (daily traffic count/distance to road)	10000	2000	97	1700	97	750	99
Lead Paint Indicator (% Pre-1960 Housing)	0.24	0.29	53	0.24	60	0.28	56
Superfund Proximity (site count/km distance)	0.17	0.18	78	0.15	81	0.13	82
RMP Proximity (facility count/km distance)	0.33	1.1	36	0.99	42	0.74	51
Hazardous Waste Proximity (facility count/km distance)	15	3.4	97	2.9	97	4	96
Wastewater Discharge Indicator (toxicity-weighted concentration/m distance)	0	17	N/A	31	54	14	37
<b>Demographic Indicators</b>							
Demographic Index	54%	48%	60	47%	62	36%	77
Minority Population	44%	62%	29	59%	33	39%	62
Low Income Population	64%	34%	88	34%	88	33%	90
Linguistically Isolated Population	8%	9%	55	8%	60	4%	79
Population With Less Than High School Education	16%	18%	55	17%	58	13%	70
Population Under 5 years of age	0%	6%	3	6%	4	6%	4
Population over 64 years of age	0%	13%	0	14%	0	15%	0

\* The National-Scale Air Toxics Assessment (NATA) is EPA's ongoing, comprehensive evaluation of air toxics in the United States. EPA developed the NATA to prioritize air toxics, emission sources, and locations of interest for further study. It is important to remember that NATA provides broad estimates of health risks over geographic areas of the country, not definitive risks to specific individuals or locations. More information on the NATA analysis can be found at: <https://www.epa.gov/national-air-toxics-assessment>.

For additional information, see: [www.epa.gov/environmentaljustice](http://www.epa.gov/environmentaljustice)

EJSCREEN is a screening tool for pre-decisional use only. It can help identify areas that may warrant additional consideration, analysis, or outreach. It does not provide a basis for decision-making, but it may help identify potential areas of EJ concern. Users should keep in mind that screening tools are subject to substantial uncertainty in their demographic and environmental data, particularly when looking at small geographic areas. Important caveats and uncertainties apply to this screening-level information, so it is essential to understand the limitations on appropriate interpretations and applications of these indicators. Please see EJSCREEN documentation for discussion of these issues before using reports. This screening tool does not provide data on every environmental impact and demographic factor that may be relevant to a particular location. EJSCREEN outputs should be supplemented with additional information and local knowledge before taking any action to address potential EJ concerns.



FEMA

(<http://www.fema.gov/>)

Navigation

Search

Languages

MSC Home ([/portal/](#))MSC Search by Address  
([/portal/search](#))MSC Search All Products  
([/portal/advanceSearch](#))▼ MSC Products and Tools  
([/portal/resources/productsandtools](#))Hazus  
([/portal/resources/hazus](#))LOMC Batch Files  
([/portal/resources/lomc](#))Product Availability  
([/portal/productAvailability](#))MSC Frequently Asked  
Questions (FAQs)  
([/portal/resources/faq](#))MSC Email Subscriptions  
([/portal/subscriptionHome](#))Contact MSC Help  
([/portal/resources/contact](#))

# FEMA Flood Map Service Center: Search By Address

Enter an address, place, or coordinates: ?

106 South Park San Francisco CA

Search

Users may experience download failures on the Flood Map Service Center (MSC) website when working with large files. If you are working with files larger than 100MB, try downloading during non-peak hours.

Whether you are in a high risk zone or not, you may need [flood insurance](https://www.fema.gov/national-flood-insurance-program) (<https://www.fema.gov/national-flood-insurance-program>) because most homeowners insurance doesn't cover flood damage. If you live in an area with low or moderate flood risk, you are 5 times more likely to experience flood than a fire in your home over the next 30 years. For many, a National Flood Insurance Program's flood insurance policy could cost less than \$400 per year. Call your insurance agent today and protect what you've built.

Learn more about [steps you can take](https://www.fema.gov/what-mitigation) (<https://www.fema.gov/what-mitigation>) to reduce flood risk damage.

## Search Results—Products for **SAN FRANCISCO, CITY AND COUNTY** OF

Show ALL Products » (<https://msc.fema.gov/portal/availabilitySearch?addcommunity=060298&communityName=SAN>)

FEMA has not completed a study to determine flood hazard for the selected location; therefore, a flood map has not been published at this time. You can contact your community or the FEMA FMIX for more information about flood risk and flood insurance in your community.

*You can choose a new flood map or move the location pin by selecting a different location on the locator map below or by entering a new location in the search field above. It may take a minute or more during peak hours to generate a dynamic FIRMette. If you are a person with a disability, are blind, or have low vision, and need assistance, please contact a map specialist (<https://msc.fema.gov/portal/resources/contact>).*



 Share This Page.

 (<https://www.facebook.com/sharer/sharer.php?u=https://msc.fema.gov/portal/search?AddressQuery=106%20South%20Park%20San%20Francisco%20CA>)  (<https://twitter.com/intent/tweet?text=FEMA+Flood+Map+Service+Center&url=https://msc.fema.gov/portal/search?AddressQuery=106%20South%20Park%20San%20Francisco%20CA&via=fema>)  (<https://www.linkedin.com/shareArticle?mini=true&url=https://msc.fema.gov/portal/search?AddressQuery=106%20South%20Park%20San%20Francisco%20CA&title=FEMA+Flood+Map+Service+Center&summary=&source=>)  (<https://plus.google.com/share?url=https://msc.fema.gov/portal/search?AddressQuery=106%20South%20Park%20San%20Francisco%20CA>)  (<http://www.tumblr.com/share/link?url=https://msc.fema.gov/portal/search?AddressQuery=106%20South%20Park%20San%20Francisco%20CA&name=FEMA+Flood+Map+Service+Center&description=>)

[Home \(/www.fema.gov/\)](https://www.fema.gov/) [Download Plug-ins \(/www.fema.gov/download-plug-ins\)](#) [About Us \(/www.fema.gov/about-agency\)](#) [Privacy Policy \(/www.fema.gov/privacy-policy\)](#) [FOIA \(/www.fema.gov/foia\)](#) [Office of the Inspector General \(/www.oig.dhs.gov\)](#) [Strategic Plan \(/www.fema.gov/fema-strategic-plan\)](#) [Whitehouse.gov \(/www.whitehouse.gov\)](#) [DHS.gov \(/www.dhs.gov\)](#) [Ready.gov \(/www.ready.gov\)](#) [USA.gov \(/www.usa.gov\)](#) [DisasterAssistance.gov \(/www.disasterassistance.gov\)](#)



(<https://www.oig.dhs.gov/hotline>)



Official website of the Department of Homeland Security





Search

#### Area of Interest

Import AOI
------------

## Quick Navigation

Address
---------

View

Address 106 South Park San Francisco  
CA

Show location marker ☒

View

State and County

Soil Survey Area

Latitude and Longitude or Current Location

PLSS (Section, Township, Range)
---------------------------------

Bureau of Land Management

Department of Defense

Forest Service

National Park Service

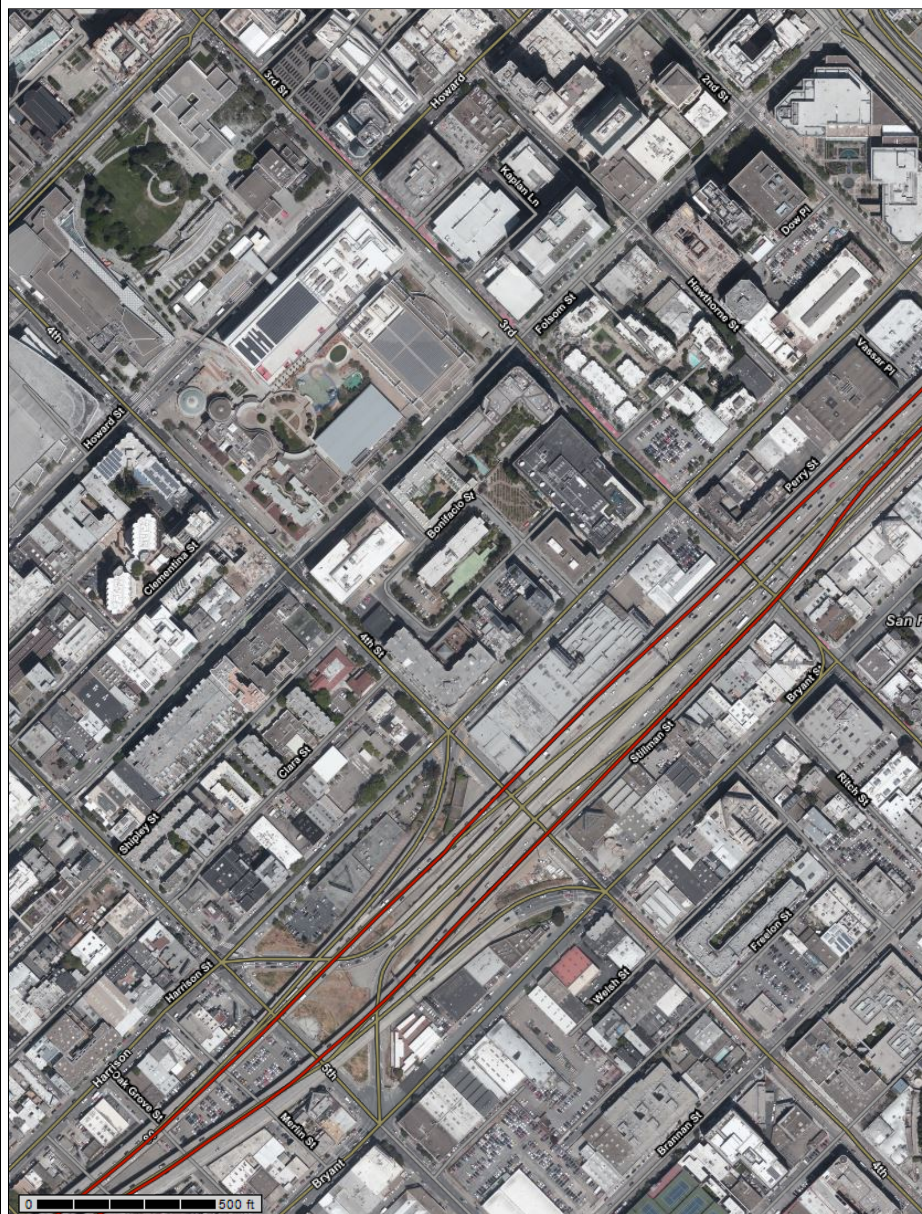
Hydrologic Unit

### Area of Interest Interactive Map



View Extent Contiguous U.S.

Scale



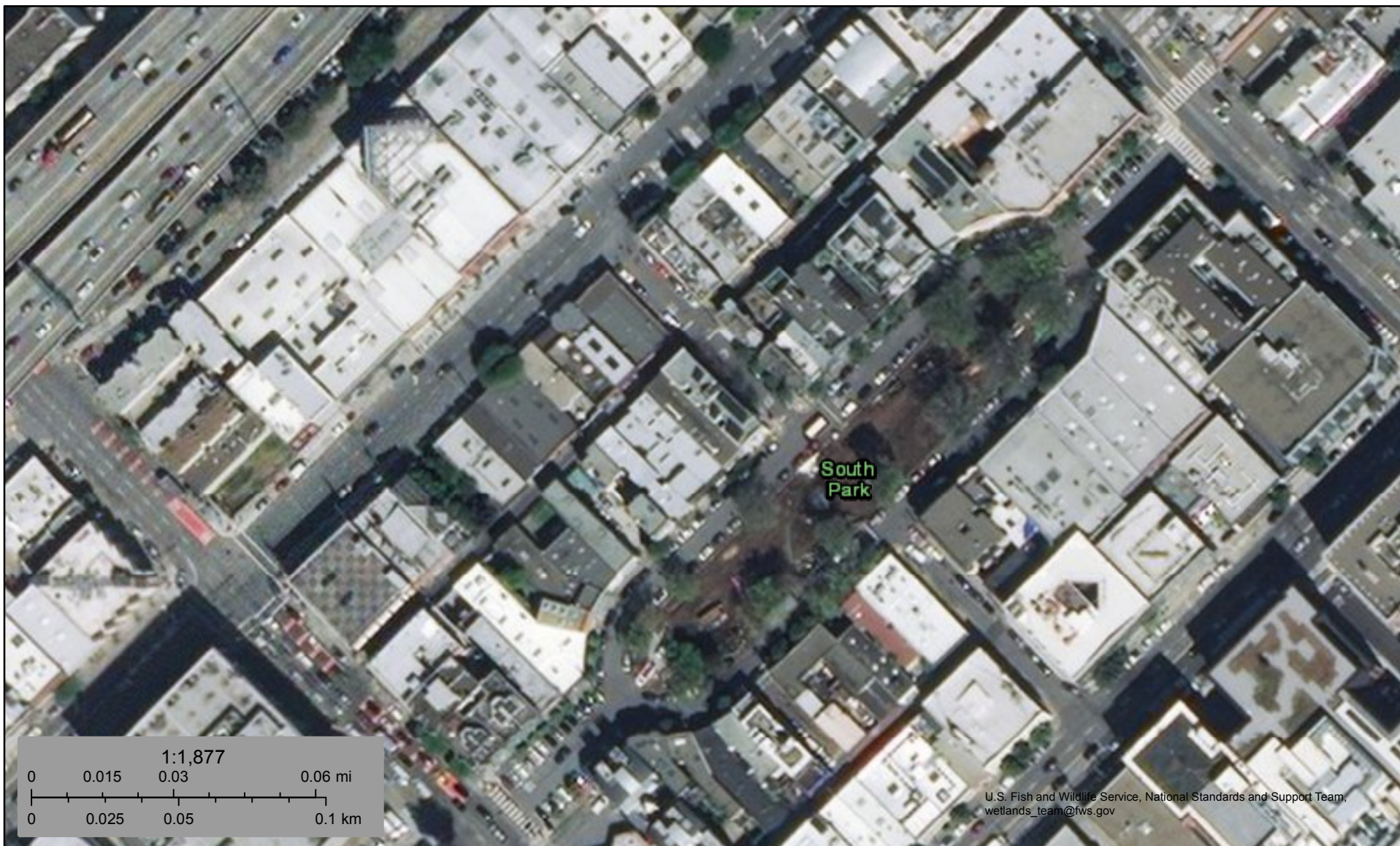




U.S. Fish and Wildlife Service

# National Wetlands Inventory

106 South Park



January 28, 2020

## Wetlands

- Estuarine and Marine Deepwater
- Estuarine and Marine Wetland

- Freshwater Emergent Wetland
- Freshwater Forested/Shrub Wetland
- Freshwater Pond

- Lake
- Other
- Riverine

This map is for general reference only. The US Fish and Wildlife Service is not responsible for the accuracy or currentness of the base data shown on this map. All wetlands related data should be used in accordance with the layer metadata found on the Wetlands Mapper web site.