



Figure 3.
Muni Upper Yard and Vicinity
San Francisco, California 94112

LEE Incorporated, San Francisco, California
 email: pstudemeister@leei.com



TABLES

1. Review of Historical Aerial Photographs
2. Review of Historical Sanborn® Maps

**Table 1: Review of Aerial Photos,
Muni Upper Yard, San Francisco, California 94112**

Site and Address	Current Conditions	Aerial Photo Description		
		2010	2009	2005
		Good Resolution	Good Resolution	Good Resolution
Muni Upper Yard (<i>subject property</i>)	The <i>subject property</i> is a paved vehicle parking lot. Not currently in service, railtracks extend from the vehicle access gate at the south end to track barriers at the north end. The vehicle access is about the intersection of San Jose Avenue and BART's Kiss-&-Ride Area.	<i>Subject property</i> features resemble current conditions.	<i>Subject property</i> features resemble conditions in 2010.	The <i>subject property</i> is used for the storage of railcars.
Adjoining Sites to the West				
Balboa Park BART Station Kiss-&-Ride Area	A paved roadway extends from San Jose Avenue at the intersection with Niagara Avenue to Geneva Avenue at the Balboa Park BART Station. Narrow landscaping occurs along the west perimeter between the BART and Highway 280 ROWs.	Site features resemble current conditions.	Site features resemble conditions in 2010.	Site features resemble conditions in 2009.
Balboa Park BART Station	BART station, around the intersection of BART's Kiss-&-Ride Area, Geneva Avenue, and Highway 280 North Bound Off-Ramp, includes a station building and auxiliary storage building and concrete paved area.	Site features resemble current conditions.	Site features resemble conditions in 2010.	Site features resemble conditions in 2009.
Highway 280 ROW	North-bound off-ramp to Geneva Avenue followed by the north bound and south bound lanes of traffic of the Highway 280.	Highway features resemble current conditions.	Highway features resemble conditions in 2010.	Highway features resemble conditions in 2009.
Adjoining Sites to the South				
Intersection of BART's Kiss-&-Ride Road, San Jose Avenue and Niagara Avenue	Paved roadway with sidewalks. Railtracks extend from San Jose Avenue into the <i>subject property</i> via the access gate at the south end.	Area features resemble current conditions.	The area resembles conditions in 2010.	The area resembles conditions in 2009.
BART ROW	A landscaped area (lawn, bushes and trees) occurs along the BART ROW between San Jose Avenue and Highway 280.	Site features resemble current conditions.	Site features resemble conditions in 2010.	Site features resemble conditions in 2009.
2401 San Jose Avenue	Parcel consisting of a 2-story single-family residential dwelling fronting San Jose Avenue; an adjoining, L-shaped, concrete surfaced parking area fronts Niagara Avenue. Residential parcels occupy the block bound by San Jose Avenue, Niagara Avenue, Delano Avenue, and Shawnee Avenue.	Site features and building layout resemble current conditions.	Site features and building layout resemble conditions in 2010.	Site features and building layout resemble conditions in 2009.
Adjoining Sites to the East				
2377 San Jose Avenue	L-shaped parcel occupied by two buildings with a concrete surfaced area at the NE corner of the intersection of San Jose Avenue and Niagara Avenue. The concrete area leads into underground parking below the parcel's main building.	Site features and building layout resemble current conditions.	Site features and building layout resemble conditions in 2010.	Site features and building layout resemble conditions in 2009.
Muni Geneva Railyard (Cameron Beach Yard), 500 Geneva Avenue	The parcel corresponds to a railyard and maintenance and shop center for Muni's historical streetcars and Light Rail Vehicles (LRVs).	Site features resemble current conditions.	Site features resemble conditions in 2010, except the structure evident in 2010 in the central railyard was not present in 2009.	Site features and building layout resemble conditions in 2009.
Geneva Office Building and Power House, 2301 San Jose Avenue	Two (2) historical buildings currently vacant and in disuse, occur along San Jose Avenue to the SW of Geneva Avenue.	Site features and building layout resemble current conditions.	Site features and building layout resemble conditions in 2010.	Site features and building layout resemble conditions in 2009.
Adjoining Sites to the Northeast				
Intersection of San Jose Avenue and Geneva Avenue	Paved roadway and sidewalks at the intersection of San Jose Avenue and Geneva Avenue.	Street features resemble current conditions.	Street features resemble conditions in 2010.	Street features resemble conditions in 2009.
2275 San Jose Avenue	One-story commercial building with paved parking area fronting Geneva Avenue and San Jose Avenue, the commercial space is vacant and in disuse. Commercial parcels occur to the NE along San Jose Avenue. Residential parcels predominate to the east and NE in the block bound by Geneva Avenue, Delano Avenue, Seneca Avenue, and San Jose Avenue.	Site features and building layout resemble current conditions.	Site features and building layout resemble conditions in 2010.	Site features and building layout resemble conditions in 2009.
Adjoining Sites to the North and Northwest				
Geneva Avenue	Paved roadway and sidewalks of Geneva Avenue.	Street features resemble current conditions.	Street features resemble conditions in 2010.	Street features resemble conditions in 2009.
Muni Green Annex and Division	The Curtis E. Green Annex (425 Geneva Avenue) is a multi-story building fronting Geneva Avenue; the building houses administrative and dispatch functions for both Muni's LRV fleet and its fleet of historical streetcars. Paved areas and railtracks extend from Geneva Avenue to connect the Balboa Park BART Station. To the NE, Muni's Green Division Light Rail Facility (2200 San Jose Avenue) extends along San Jose Avenue between Geneva Avenue and Ocean Avenue.	Site features and building layout resemble current conditions.	Gross features and building layout resemble conditions in 2010.	Gross features and building layout of the MUNI facility resemble conditions in 2009.
BART ROW	The Balboa Park BART Station with Muni connection occurs between Muni's Green Division and Annex to the east and Highway 280 to the west.	Site features resemble current conditions.	Site features resemble conditions in 2010.	Site features resemble conditions in 2009.

**Table 1: Review of Aerial Photos,
Muni Upper Yard, San Francisco, California 94112**

Site and Address	Aerial Photo Description			
	1998	1993	1982	1974
	Moderate Resolution	Moderate Resolution	Poor Resolution	Poor Resolution
Muni Upper Yard (<i>subject property</i>)	<i>Subject property</i> features resemble conditions in 2005.	At the time, the <i>Subject property</i> apparently was used for parking of vehicles.	Detail features of the <i>subject property</i> are not discernible because of the limited resolution.	Detail features of the <i>subject property</i> are not discernible because of the limited resolution.
Adjoining Sites to the West				
Balboa Park BART Station Kiss-&-Ride Area	Site features resemble conditions in 2005.	Site features resemble conditions in 1998.	Within the limited resolution, gross features resemble conditions in 1993.	Area details are not discernible because of the limited resolution.
Balboa Park BART Station	Site features resemble conditions in 2005.	Site features resemble conditions in 1998.	Within the limited resolution, gross features resemble conditions in 1993.	Within the limited resolution, the gross layout of the station resembles conditions in 1982.
Highway 280 ROW	Highway features resemble conditions in 2005.	Highway features resemble conditions in 1998.	Within the limited resolution, gross features resemble conditions in 1993.	Within the limited resolution, the gross layout of the highway resembles conditions in 1982.
Adjoining Sites to the South				
Intersection of BART's Kiss-&-Ride Road, San Jose Avenue and Niagara Avenue	The area resembles conditions in 2005.	The area resembles conditions in 1998.	Within the limited resolution, the area generally resembles conditions in 1993.	Area detail are not discernible because of the limited resolution.
BART ROW	Site features resemble conditions in 2005.	Site features resemble conditions in 1998.	Gross site features resemble conditions in 1993.	Within the limited resolution, the gross layout of the station resembles conditions in 1982.
2401 San Jose Avenue	Site features and building layout resemble conditions in 2005.	Within the limited resolution, the building layout resembles conditions in 1998.	Site details are not discernible because of the limited resolution.	Site detail are not discernible because of the limited resolution.
Adjoining Sites to the East				
2377 San Jose Avenue	Site features and building layout resemble conditions in 2005.	The building layout resembles conditions in 1998.	Site details are not discernible because of the limited resolution.	Site detail are not discernible because of the limited resolution.
Muni Geneva Railyard (Cameron Beach Yard), 500 Geneva Avenue	site features and building layout resemble conditions in 2005.	Site features and building layout resemble conditions in 1998.	Site details are not discernible because of the limited resolution.	Within the limited resolution, the site appears to be a railyard.
Geneva Office Building and Power House, 2301 San Jose Avenue	Site features and building layout resemble conditions in 2005.	Within the limited resolution, the building layout resembles conditions in 1998.	Site details are not discernible because of the limited resolution.	Site detail are not discernible because of the limited resolution.
Adjoining Sites to the Northeast				
Intersection of San Jose Avenue and Geneva Avenue	Street features resembles conditions in 2005.	Street features resembles conditions in 1998.	Gross street features resembles conditions in 1993.	Gross street features resemble conditions in 1982.
2275 San Jose Avenue	Site features and building layout resemble conditions in 2005.	Site details are not discernible because of the limited resolution.	Site details are not discernible because of the limited resolution.	Site details are not discernible because of the limited resolution.
Adjoining Sites to the North and Northwest				
Geneva Avenue	Street features resemble conditions in 2005.	Gross street features resemble conditions in 1998.	Gross street features resemble conditions in 1993.	Gross street features resemble conditions in 1982.
Muni Green Annex and Division	Site features and building layout resemble conditions in 2005.	Gross features and building layout resemble conditions in 1998.	The Green Annex and Division are not present. Site details are not discernible because of the limited resolution.	The Green Annex and Division are not present. The gross layout of buildings of the adjoining maintenance facility (2200 San Jose Avenue) differs from conditions in 1982.
BART ROW	Site features resemble conditions in 2005.	Gross site features resemble conditions in 1998.	Within the limited resolution, gross features resemble conditions in 1993.	Station details are not discernible because of the limited resolution.

**Table 1: Review of Aerial Photos,
Muni Upper Yard, San Francisco, California 94112**

Site and Address	Aerial Photo Description			
	1968	1956	1946	1943
	Good Resolution	Moderate Resolution	Good Resolution	Good Resolution
Muni Upper Yard (<i>subject property</i>)	<i>Subject property</i> was used as a storage or parking yard for long vehicles, resembling buses from the limited photo resolution. Vehicle access was via San Jose Avenue along the east side, and Geneva Avenue at the north end.	As in 1968, the <i>subject property</i> apparently was used for storage or parking of long vehicles, resembling buses from the limited photo resolution.	The <i>subject property</i> consisted of a series of contiguous parcels fronting San Jose Avenue and Geneva Avenue, the parcels each contained at least one building.	<i>Subject property</i> features resembled conditions in 1946.
Adjoining Sites to the West				
Balboa Park BART Station Kiss-&-Ride Area	The area appeared to be paved and contain a structure whose details are not discernible.	The area is occupied by a large rectangular building with several small adjoining structures and a yard.	The area west to northwest of the <i>subject property</i> resembled conditions in 1956.	The area resembles conditions in 1946.
Balboa Park BART Station	BART station was not in existence at the time - detail features of the site are not discernible. The site may be a landscaped area near the Highway 280 off-ramp at Geneva Avenue.	The area appears to include landscaped area and possibly used for storage.	The area appears undeveloped, resembling conditions in 1956.	The area resembles conditions in 1946.
Highway 280 ROW	The gross highway features resemble conditions in 1974.	The highway ROW consists of an industrial developed, NNE-SSW railroad tracks alignment that includes buildings and is followed to the west by vacant and improved parcels fronting Tara Avenue and Niagara Avenue.	The area resembles conditions in 1956.	The area resembles conditions in 1946.
Adjoining Sites to the South				
Intersection of BART's Kiss-&-Ride Road, San Jose Avenue and Niagara Avenue	The area appears to be cleared, possibly under construction and/or used as an access route from the San Jose Avenue vs. Niagara Avenue intersection to the facility adjoining the west side of the <i>subject property</i> .	Niagara Avenue continues west of San Jose Avenue. Niagara Avenue and intersection with San Jose Avenue provide access to the <i>subject property</i> and the adjoining facility to the west.	Area features generally resembled conditions in 1956.	Area features resembled conditions in 1946.
BART ROW	Area appears to be cleared, vehicles or small structures (not discernible) are noted to the west of the San Jose Avenue vs. Niagara Avenue intersection.	The SW corner area of the Niagara Avenue vs. San Jose Avenue intersection is occupied by various structures or buildings not discernible because of the limited resolution.	Site features resembled conditions in 1956.	Gross features resemble conditions in 1946.
2401 San Jose Avenue	The site may have a small structure. The block bound by San Jose Avenue, Niagara Avenue, Shawnee Avenue, and Delano Avenue appears subdivided into parcels resembling a residential development.	Site and vicinity features resemble conditions in 1968.	Site and vicinity features resemble conditions in 1956.	Site and vicinity features resemble conditions in 1946.
Adjoining Sites to the East				
2377 San Jose Avenue	Gross features and building layout resemble conditions in 1993.	Gross features and building layout resemble conditions in 1968.	In contrast to 1956, the property appears to be vacant. Residential like development is evident along Niagara Avenue to the SE of San Jose Avenue intersection.	Site features resemble conditions in 1946.
Muni Geneva Railyard (Cameron Beach Yard), 500 Geneva Avenue	The site appears to be largely comprised of a paved yard.	Site features resemble conditions in 1968.	Site features generally resemble conditions in 1956.	Site features resemble conditions in 1946.
Geneva Office Building and Power House, 2301 San Jose Avenue	Gross features and building layout resemble conditions in 1993.	Site features and building layout resemble conditions in 1968.	Site features and building layout resemble conditions in 1956.	Site features and building layout resemble conditions in 1946.
Adjoining Sites to the Northeast				
Intersection of San Jose Avenue and Geneva Avenue	Gross features resembles conditions in 1974.	Gross street features resemble conditions in 1968.	Gross street features resemble conditions in 1956.	Gross street features resemble conditions in 1946.
2275 San Jose Avenue	Gross site features and building layout resemble conditions in 1993.	The parcel appeared to be part of a larger property with no buildings, and possibly under construction, at the east corner area of the San Jose Avenue vs. Geneva Avenue intersection.	The parcel appears to be vacant open ground, part of a larger undeveloped area occupying the NE corner of the San Jose Avenue vs. Geneva Avenue intersection.	Site features resemble conditions in 1946.
Adjoining Sites to the North and Northwest				
Geneva Avenue	Gross street features resemble conditions in 1974.	Geneva Avenue extended along the northeast side of the <i>subject property</i> and adjoining facility, continuing NW from the San Jose Avenue intersection to Tara Avenue.	Geneva Avenue continues NW of San Jose Avenue, extending along the north side of the <i>subject property</i> . Not reaching Tara Avenue, Geneva Avenue merges into a road that turns NNE towards the NNE-SSW railroad tracks alignment and railyard facility.	Street features resemble conditions in 1946.
Muni Green Annex and Division	Gross features of the railyards and building layout resemble conditions in 1974. Much of the area on the east side of Geneva Avenue is used for storage of long vehicles that resemble buses.	Gross railyard features and building layout of the MUNI facility resemble conditions in 1968. Storage of long vehicles, resembling buses, and possibly railroad ties are noted on the NE side of Geneva Avenue.	The area appeared to be part of a large yard that extends to the Muni facility that occupies the area NE of Geneva Avenue between San Jose Avenue and the NNE-SSW railroad tracks alignment.	Similar to conditions in 1946, the area was part of a railyard and storage area. Not discernible because of limited resolution, buildings or structures occupy the north corner area of San Jose Avenue vs. Geneva Avenue intersection.
BART ROW	The area of the Balboa Park BART Station and BART ROW may be under construction, and appears to be used as a roadway for access to the west side of the Muni maintenance facility.	The area was part of the yard and industrial facility along the NNE-SSW railroad tracks alignment.	Gross features of the area and vicinity generally resemble conditions in 1956, except Geneva Avenue does not extend to Tara Avenue.	Gross features resemble conditions in 1946.
Highway 280 ROW	The gross features of the highway resemble conditions in 1974.	The highway ROW consists of the industrial, NNE-SSW railroad tracks alignment followed by vacant and improved parcels fronting Geneva Avenue and Tara Avenue.	Gross features of the area resemble conditions in 1956.	Gross features resemble conditions in 1946.

**Table 2: Review of Sanborn® Maps,
Muni Upper Yard, San Francisco, California 94112**

Site and Address	Current Conditions	Sanborn® Map Description		
		1999	1991	1989
Muni Upper Yard (<i>subject property</i>)	The <i>subject property</i> is a paved vehicle parking lot. Not currently in service, railtracks extend from the vehicle access gate at the south end to track barriers at the north end. The vehicle access gate is about the intersection of San Jose Avenue and BART's Kiss-&-Ride Area.	No structures are evident on the parcel. The area encompassing the parcel between San Jose Avenue, Geneva Avenue, and Highway 280 is labeled "Bus Storage Yard."	<i>Subject property</i> features resemble conditions in 1999.	<i>Subject property</i> features resemble conditions in 1991.
Adjoining Sites West				
Balboa Park BART Station Kiss-&-Ride Area	A paved roadway extends from San Jose Avenue at the intersection with Niagara Avenue to Geneva Avenue at the Balboa Park BART Station. Narrow landscaping occurs along the west perimeter between the BART and Highway 280 ROWs.	No structures are shown.	Site features resemble conditions in 1999.	Site features resemble conditions in 1991.
Balboa Park BART Station	BART station, around the intersection of BART's Kiss-&-Ride Area, Geneva Avenue, and Highway 280 North Bound Off-Ramp, includes a station building and auxiliary storage building and concrete paved area.	Resembling the current layout, the station area is labeled "Balboa Park Station BART."	Site features resemble conditions in 1999.	Site features resemble conditions in 1991.
Highway 280 ROW	North-bound off-ramp to Geneva Avenue followed by the north bound and south bound lanes of traffic of Highway 280.	Gross layout of the highway resemble current conditions.	Gross layout of the highway resembles conditions in 1999.	Gross layout of the highway resembles conditions in 1999.
Adjoining Sites to the South				
Intersection of BART's Kiss-&-Ride Road, San Jose Avenue and Niagara Avenue	Paved roadway with sidewalks. Railtracks extend from San Jose Avenue into the <i>subject property</i> via the vehicle access gate at the south end.	No structures or detail are shown in this area. The intersection of San Jose Avenue and Niagara Avenue resembles current conditions.	The area resembles conditions in 1999.	The area resembles conditions in 1991.
BART ROW	A landscaped area (lawn, bushes and trees) occurs along the BART ROW between San Jose Avenue and Highway 280.	No structures or details are shown.	Site features resemble conditions in 1999.	Site features resemble conditions in 1991.
2401 San Jose Avenue	Parcel consisting of a 2-story single-family residential dwelling fronting San Jose Avenue; an adjoining, L-shaped, concrete surfaced parking area fronts Niagara Avenue. Residential parcels occupy the block bound by San Jose Avenue, Niagara Avenue, Delano Avenue, and Shawnee Avenue.	Parcel features and building layout resemble current conditions; the 1-story building is labeled as residential.	Parcel features and building layout resemble conditions in 1999. The 1-story building is labeled "Dwelling"	Parcel features and building layout resemble conditions in 1991.
Adjoining Sites to the East				
2377 San Jose Avenue	L-shaped parcel occupied by two buildings with a concrete surfaced area at the NE corner of the intersection of San Jose Avenue and Niagara Avenue. The concrete area leads into underground parking below the parcel's main building.	Labeled "Turko Persian Rug Company," site features and building layout resemble current conditions. The main building has areas labeled "Rug Dry Room" and "Rug Cleaning." The adjoining building is labeled "Rug Storage."	Property features and building layout resemble conditions in 1999.	Property features and building layout resemble conditions in 1991.
Muni Geneva Railyard (Cameron Beach Yard), 500 Geneva Avenue	The parcel corresponds to a railyard and maintenance and shop center for Muni's historical streetcars and Light Rail Vehicles (LRVs).	Property features and building layout resemble current conditions. The central yard is labeled "MUNI - Car Storage Yard," and the 2-story building at the SW end "MUNI Car Repair Shop & Power Plant, 1984." A small 1-story structure on the SW side is labeled "Control HO, 1984."	Property features and building layout resemble conditions in 1999.	Property features and building layout resemble conditions in 1991.
Geneva Office Building and Power House, 2301 San Jose Avenue	Two (2) historical buildings currently vacant and in disuse, occur along San Jose Avenue to the SW of Geneva Avenue.	Site features and building layout resemble current conditions. The larger 2-story building is labeled "Offices 1st, Club Rms 2nd," and adjoining building to the SW, "Power House."	Property features and building layout resemble conditions in 1999.	Property features and building layout resemble conditions in 1991.
Adjoining Properties to the Northeast				
Intersection of San Jose Avenue and Geneva Avenue	Paved roadway and sidewalks at the intersection of San Jose Avenue and Geneva Avenue.	The street intersection resembles current conditions.	The street intersection resembles conditions in 1999.	The street intersection resembles conditions in 1991.
2275 San Jose Avenue	One-story commercial building with paved parking area fronting Geneva Avenue and San Jose Avenue; the commercial space is vacant and in disuse. Commercial parcels occur to the NE along San Jose Avenue. Residential parcels predominate to the east and NE in the block bound by Geneva Avenue, Delano Avenue, Seneca Avenue, and San Jose Avenue.	Parcel features and building layout resemble current conditions. The building is divided into two areas, one area labeled "Restaurant" and the other "Store" The area between the building and Geneva Avenue is labeled "Parking."	Parcel features and building layout resemble conditions in 1999.	Parcel features and building layout resemble conditions in 1991.
Adjoining Properties to the North and Northwest				
Geneva Avenue	Paved roadway and sidewalks of Geneva Avenue.	Street features resemble current conditions.	Street features resemble conditions in 1999.	Street features resemble conditions in 1991.
MUNI Green Annex and Division	The Curtis E. Green Annex (425 Geneva Avenue) is a multi-story building fronting Geneva Avenue; the building houses administrative and dispatch functions for both Muni's LRV fleet and its fleet of historical streetcars. Paved areas and railtracks extend from Geneva Avenue to connect the Balboa Park BART Station. To the NE, Muni's Green Division Light Rail Facility (2200 San Jose Avenue) extends along San Jose Avenue between Geneva Avenue and Ocean Avenue.	Gross features and building layout of the MUNI facility resemble current conditions. The 2-story building fronting Geneva Avenue is labeled "Muni Rail Center, 1984." The large complex to the NE fronting San Jose Avenue is labeled "Muni Railways, 1976."	Gross features and building layout resemble conditions in 1999.	Gross features and building layout resemble conditions in 1991.
BART ROW	The Balboa Park BART Station with Muni connection occurs between Muni's Green Division and Annex to the east and Highway 280 to the west.	The Balboa Park BART Station and BART ROW are shown, resembling the current layout.	The Balboa Park BART Station and BART ROW are shown, resembling conditions in 1999.	The Balboa Park BART Station and BART ROW are shown, resembling conditions in 1991.
Highway 280 ROW	North-bound on-ramp from Geneva Avenue followed by the north-bound and sound-bound lanes of traffic of Highway 280.	Gross layout of the highway resemble current conditions.	Gross layout of the highway resemble conditions in 1999.	Gross layout of the highway resemble conditions in 1991.

**Table 2: Review of Sanborn® Maps,
Muni Upper Yard, San Francisco, California 94112**

Site and Address	Sanborn® Map Description			
	1975	1972	1950	1915
Muni Upper Yard (<i>subject property</i>)	<i>Subject property</i> features resemble conditions in 1989.	<i>Subject property</i> features resemble conditions in 1975.	<i>Subject property</i> features resemble conditions in 1972.	<i>Subject property</i> is subdivided into parcels fronting San Jose Avenue and Geneva Avenue. The parcel at the south end (2382 San Jose Avenue) is improved with 2 small 1-story buildings. The next parcel (2332 San Jose Avenue) includes a 1-story dwelling and several small structures, one representing a water tank. The remaining parcels fronting San Jose Avenue (2326 to 2306 San Jose Avenue) are each improved with a 1-story dwelling; some also have a small shed. The parcel at the NE end fronting Geneva Avenue (424 Geneva Avenue) is improved with a 1-story dwelling and shed.
Adjoining Sites West				
Balboa Park BART Station Kiss-&-Ride Area	Site features resemble conditions in 1989.	Site features resemble conditions in 1975.	The area immediately to the northwest of the <i>subject property</i> is designated "San Francisco Municipal Railways Paint Shop" and includes a rectangular building with an adjoining shed. Building areas are labeled "Painting and Varnishing" and "Washing." A small building adjoining the south end is labeled "Painting" and "Storage."	Site features and building layout resemble conditions in 1950, except the facility is designated as "United Railroads Paint Shop."
Balboa Park BART Station	Site features resemble conditions in 1989.	Site features resemble conditions in 1975.		
Highway 280 ROW	Gross layout of the highway resembles conditions in 1989.	Gross layout of the highway resembles conditions in 1975.	The highway ROW west of the paint shop facility consists of a NNE-SSW alignment with railroad tracks and labeled "San Francisco Glass Co." Facility structures include "Sheet Metal Shop," "Shower Door Assembly," "Carpentry Shop," and "Storage." To the west of the NNE-SSW alignment and glass facility, there is a residential neighborhood dominated by parcels with 1-story dwellings fronting Tara Avenue and Niagara Avenue.	As in 1950, the NNE-SSW alignment occurs to the west of the paint shop. However, structures of the San Francisco Glass Co. facility are not present in 1915. To the west of the NNE-SSW alignment is a block bound by Geneva Avenue, Tara Avenue and Niagara Avenue with no structures except at the north corner. The corner area of Tara Avenue vs. Geneva Avenue has several structures labeled "Blanchard & Brown Asphaltum Plant."
Adjoining Sites to the South				
Intersection of BART's Kiss-&-Ride Road, San Jose Avenue and Niagara Avenue	The area resembles conditions in 1989.	The area resembles conditions in 1975.	The intersection of San Jose Avenue with Niagara Avenue resembles conditions in 1975. However, Niagara Avenue continues to the west of San Jose Avenue and into the residential neighborhood that lies west of the NNE-SSW alignment.	Gross features of the area resemble conditions in 1950.
BART ROW	Site features resemble conditions in 1989.	Site features resemble conditions in 1975.	The area consists of the Niagara Avenue ROW. A contractors yard with small buildings ("Office" and "Storage") occupies the SW corner lot at Niagara Avenue vs. San Jose Avenue.	Gross street features of the area resemble conditions in 1950, except no structures are shown in the west corner lot of the Niagara Avenue vs. San Jose Avenue intersection.
2401 San Jose Avenue	Parcel features and building layout resemble conditions in 1989.	Parcel features and building layout resemble conditions in 1975.	Parcel features and building layout resemble conditions in 1972.	The parcel and vicinity was part of a lumber yard and used for storage of lumber and shingles. The lumber yard occupies the area to the south of the intersection of San Jose Avenue and Niagara Avenue.
Adjoining Sites to the East				
2377 San Jose Avenue	Site features and building layout resemble conditions in 1989.	Site features and building layout resemble conditions in 1975.	Site features and building layout resemble conditions in 1972.	Except for a 1-story dwelling at the east corner of the San Jose Avenue vs. Niagara Avenue intersection, no structures are shown as compared to 1950.
Muni Geneva Railyard (Cameron Beach Yard), 500 Geneva Avenue	The site is "San Francisco Municipal Railway Geneva Avenue Cab Barns & Shops." The SW portion has a railyard yard and car barns, and NW portion has a garage and metal work shops.	Gross features and building layout resemble conditions in 1975.	Gross features and building layout resemble conditions in 1972.	Gross features and building layout resemble conditions in 1950, except the site is labeled "United Railroads of San Francisco, Geneva Avenue Car Barns and Shops."
Geneva Office Building and Power House, 2301 San Jose Avenue	Gross features and building layout resemble conditions in 1989.	Gross features and building layout resemble conditions in 1975.	Gross features and building layout resemble conditions in 1972.	Gross features and building layout resemble conditions in 1950.
Adjoining Sites to the Northeast				
Intersection of San Jose Avenue and Geneva Avenue	The street intersection resembles conditions in 1989.	The street intersection resembles conditions in 1975.	The street intersection resembles conditions in 1972.	The street intersection resembles conditions in 1950
2275 San Jose Avenue	Parcel features and building layout resemble conditions in 1989.	Parcel features and building layout resemble conditions in 1975.	No structures are shown in the area.	In contrast to 1950, no structures are shown in the east corner area of the San Jose Avenue vs. Geneva Avenue intersection.
Adjoining Sites to the North and Northwest				
Geneva Avenue	Street features resemble current conditions.	Street features resemble conditions in 1975.	The street to the NE of the <i>subject property</i> and adjoining paint shop is used for storage, labeling reads "Piles of Railroad Iron."	Geneva Avenue extends along the NE side of the <i>subject property</i> and adjoining paint shop; labeling reads "Not Opened."
MUNI Green Annex and Division	The Muni facility at 425 Geneva Avenue is not present; the area is a yard with no structures labeled "Bus Storage Yard." A bus maintenance facility occurs to the NE along San Jose Avenue, differing in building layout from the facility in 1989.	No structures or buildings are shown - the area appears to be part of a "Bus Storage Yard."	Gross features resemble conditions in 1972.	A restaurant occupies the north corner of San Jose Avenue vs. Geneva Avenue followed to the NW by a 1-story dwelling. The remainder of the NE side of Geneva Avenue consists of a railyard used for storage of railroad iron and contiguous with a rail maintenance facility between San Jose Avenue and the NNE-SSW alignment.
BART ROW	The layout of the Balboa Park BART Station resembles conditions in 1989.	The layout of the Balboa Park BART Station and BART ROW resembles conditions in 1975.	The area is part of the Muni storage yard that extends from San Jose Avenue to the NNE-SSW railroad tracks alignment.	The area is part of the railyard that extends along the NE side of Geneva Avenue between San Jose Avenue and the NNE-SSW railroad tracks alignment.
Highway 280 ROW	Gross layout of the highway resembles conditions in 1989.	Gross layout of the highway resembles conditions in 1975.	The highway ROW to the west of the railyard consists of the NNE-SSW alignment labeled "San Francisco Glass Co" with a "Carpentry Shop" and "Machine Shop," followed by a residential neighborhood of parcels with 1-story dwellings.	The highway ROW to the west of the railyard is part of the NNE-SSW railroad tracks alignment. San Francisco Glass Co. facilities are not present in 1915. Further to the west is an area partially developed, mixed commercial and residential.



Phase I Site Assessment Report
Muni Upper Yard, San Francisco, California 94112

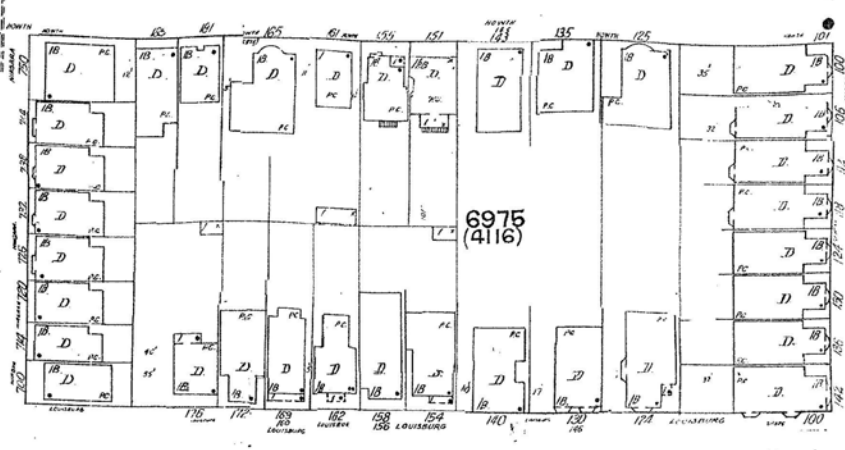
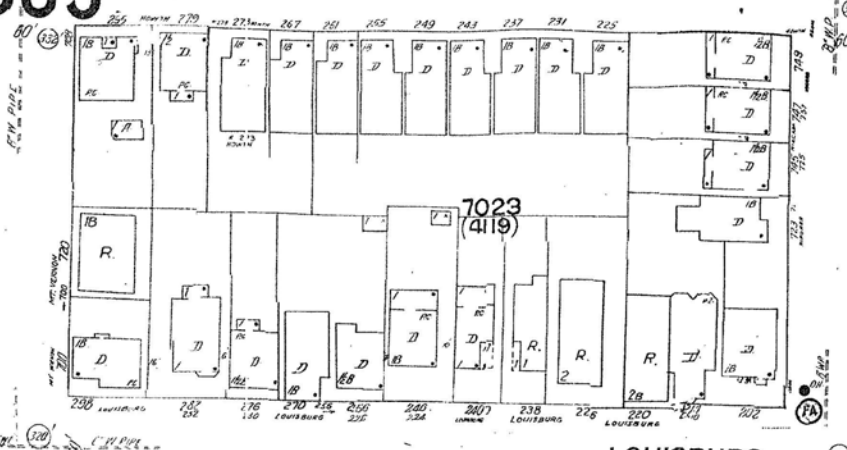
APPENDIX A

San Francisco Planning Department Records

963

946

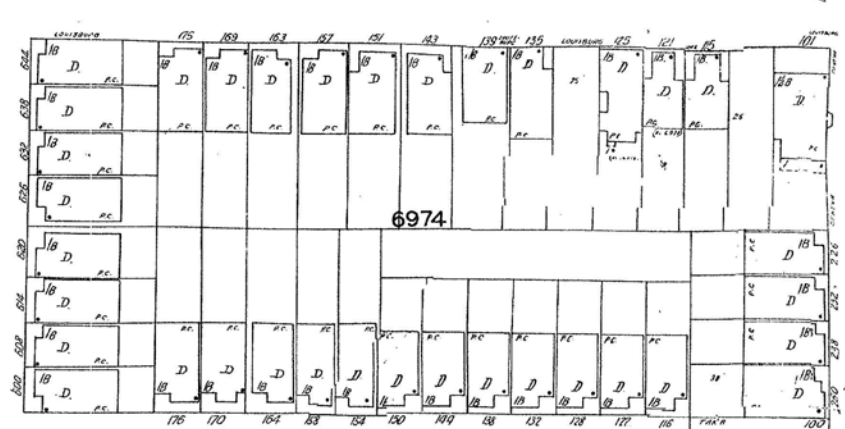
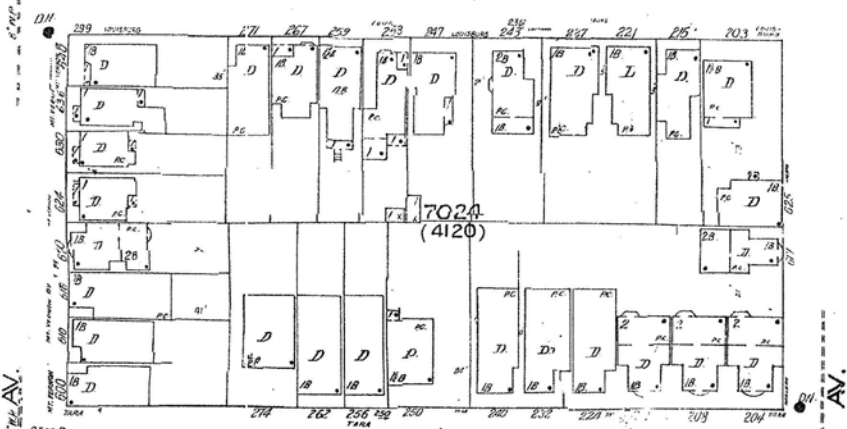
962



LOUISBURG

7023
(419)

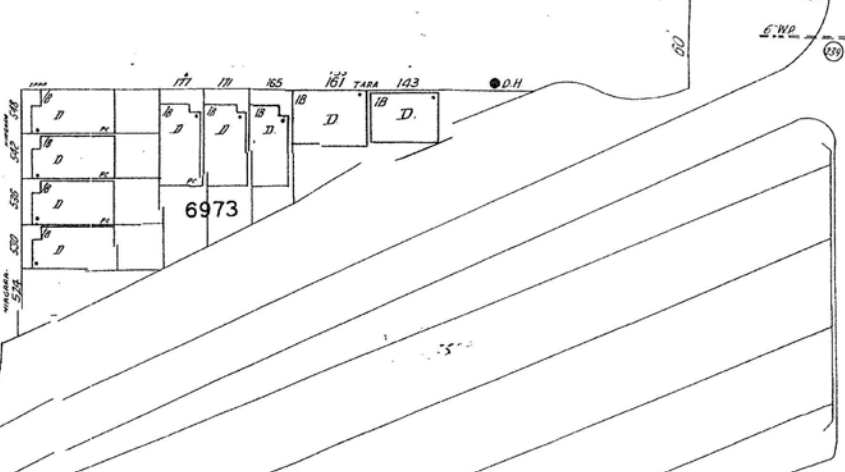
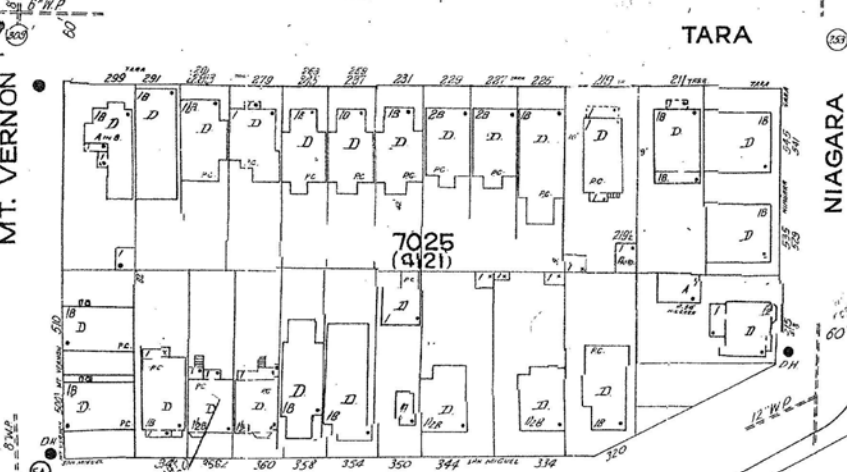
6976
(416)



TARA

6974

7024
(420)



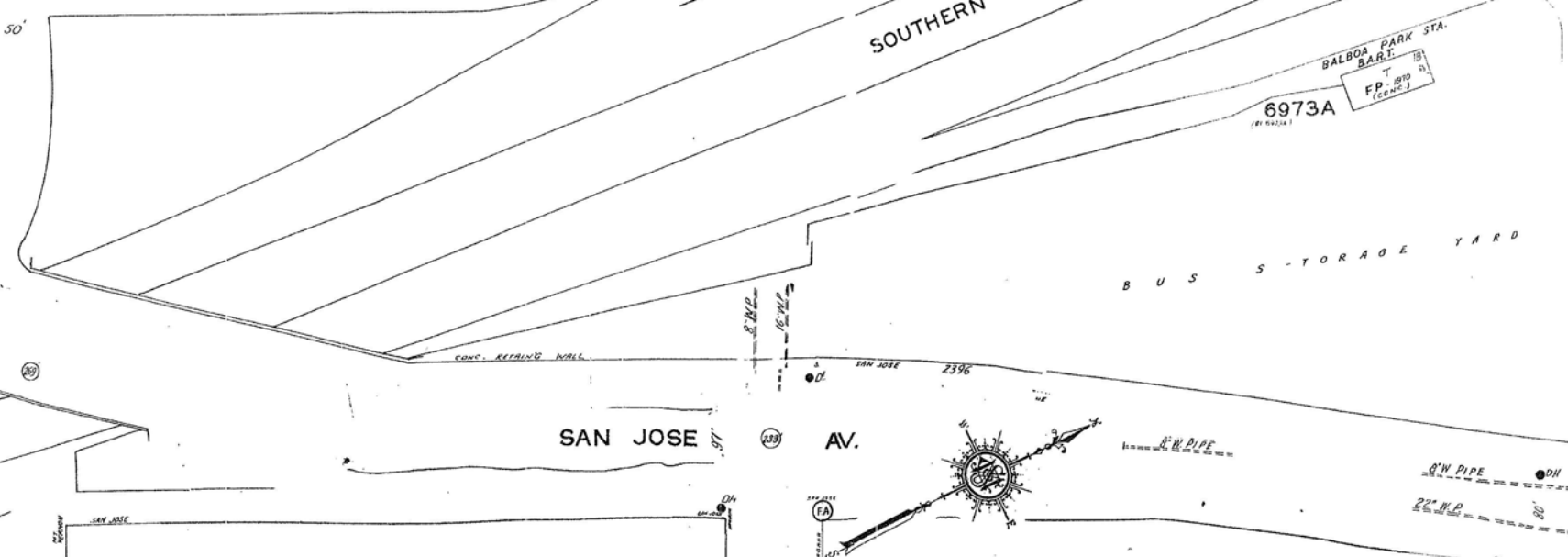
NIAGARA

6973

7025
(421)



SAN MIGUEL



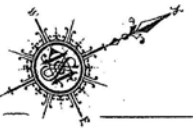
SOUTHERN FREEWAY

6973A
(421A)

BUS STORAGE YARD

SAN JOSE AV.

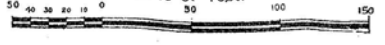
AV.



974

975

Scale of Feet.



964

GENEVA AV.

MT. VERNON

962

963

964

965

966

967

968

969

970

971

972

973

974

975

976

977

978

979

980



APPENDIX B

User Provided Information

**ASTM E-1527 PHASE I ENVIRONMENTAL SITE ASSESSMENT
PRE-SURVEY QUESTIONNAIRE AND DISCLOSURE STATEMENT**

Paul Stulemeister 650-234-1030

Borrower: Please complete this questionnaire before the Consultant's site visit. For those questions that are not applicable to the subject please respond with an "N/A". This document must be signed by the Owner or his/her representative (Item No. 2). If you have any questions about how to answer any of the questions please call us. If additional pages for response are necessary please attach them to this form. Clearly mark all references to the appropriate question number(s). This document and your written response to same will be an exhibit in ~~PHI~~ report.

(Tab from field to field to enter data)

1. PROPERTY INFORMATION:

Property Name: <i>SFMTA UPPER YARD</i>		
Property Address: <i>Corner of San Jose Ave (east); Geneva Ave (North)</i>		
City: <i>San Francisco</i>	State: <i>CA</i>	Zip: <i>94112</i>
Assessor's Parcel Number: <i>6973/039</i>		

2. COMPLETED BY

Signature <i>Jason Gallegos</i>	Date <i>2/26/13</i>
Printed Name <i>JASON GALLEGOS</i>	Title <i>Real Estate Development Manager</i>

3. ASTM-REQUIRED INQUIRIES

Property Owner: Name: <i>City/County of San Francisco/SFMTA</i> Phone: <i>(415) 701-4622</i> Fax:	
Key Site Manager (Site contact): Name: <i>N/A</i> Phone: Fax:	
If not residential Property, please provide list of tenants, including contact names and phone numbers.	
Can you provide a Current Title Abstract for the Property, including a chain of Title? If so, please send documents along with completed questionnaire	<input type="checkbox"/> Yes <input checked="" type="checkbox"/> No
Do you have knowledge of any environmental liens recorded against the Property, or environmentally related Activity and Use Limitations of the Property?	<input type="checkbox"/> Yes <input checked="" type="checkbox"/> No
Do you have any specialized knowledge that would be material in identifying recognized environmental conditions in connection with the Property?	<input type="checkbox"/> Yes <input checked="" type="checkbox"/> No
Are you aware of a reduction in the property value due to environmental issues?	<input type="checkbox"/> Yes <input checked="" type="checkbox"/> No
Are you aware of any relationship between the Purchase Price of the Property to the actual value of the Property due to environmental issues?	<input type="checkbox"/> Yes <input checked="" type="checkbox"/> No
Please attach explanation of all affirmative answers	
8) Please state reason for procuring this Phase 1 ESA:	
<input type="checkbox"/> Qualify for Innocent Landowner, Contiguous Property Owner, or Bona Fide Prospective Purchaser defense to CERCLA Liability.	
<input type="checkbox"/> Lender requirement.	
If the reason for this ESA is because of a lender requirement, may we contact the lender? Yes ___ No ___	

If yes, please provide the following:

Name of Lender _____

Address _____

City, State _____

Phone Number _____

Contact person _____

Other: (state below)
Internal discussions

4. PLEASE PROVIDE A GENERAL SITE DESCRIPTION BY COMPLETING THE FOLLOWING TABLE:

Legal description/ boundary survey/ plat available (please send _____ if "yes")	<input type="checkbox"/> Yes <input checked="" type="checkbox"/> No
Total Property Size	<i>30,750 SF</i>
Total number of buildings	<i>NONE → Unimproved</i>
Total square footage of buildings	<i>N/A</i>
Date of construction	<i>Unknown</i>
Dates of significant renovation	<i>Unknown</i>
Waste water discharge	<input type="checkbox"/> Municipal Sanitary Sewer <input type="checkbox"/> On-site septic system <input type="checkbox"/> Other <i>N/A</i>
Potable water source	<input type="checkbox"/> Community Water Supplier <input type="checkbox"/> On-site well <input type="checkbox"/> Other <i>N/A</i>
Please describe prior use of property, if known: <i>Currently serves as an employee parking lot and previous use was as a storage yard for light rail and historic rail vehicles on an inconsistent basis. Fully paved w/ numerous sidings rail lines and overhead lines.</i>	

5. PREVIOUS INVESTIGATIONS:

Have any previous environmental investigations been performed at the site?	<input type="checkbox"/> Yes <input checked="" type="checkbox"/> No
INVESTIGATION TYPE If yes, please describe conclusions, and attach copy of report(s)	
<input type="checkbox"/> Phase 1 ESA	
<input type="checkbox"/> Phase 2 ESA	
<input type="checkbox"/> Tank Tightness Testing	
<input type="checkbox"/> Asbestos Survey/ O&M	
<input type="checkbox"/> Radon	
<input type="checkbox"/> Lead-based Paint	

Have any previous environmental investigations been performed at the site?

Yes No

INVESTIGATION TYPE

If yes, please describe conclusions, and attach copy of report(s)

<input type="checkbox"/>	Lead in Water	
<input type="checkbox"/>	Operations & Maintenance Plan(s)	
<input type="checkbox"/>	Other	

6. ON SITE OPERATIONS

Are you aware of any of the following conditions, either past or present, on the site?

Condition	Response	If yes, please describe
1. Stored Chemicals	<input type="checkbox"/> Yes <input checked="" type="checkbox"/> No	
2. Underground Storage Tanks	<input type="checkbox"/> Yes <input checked="" type="checkbox"/> No	
3. Aboveground Storage Tanks	<input type="checkbox"/> Yes <input checked="" type="checkbox"/> No	
4. Spills or Releases	<input type="checkbox"/> Yes <input checked="" type="checkbox"/> No	
5. Dump Areas/ Landfills	<input type="checkbox"/> Yes <input checked="" type="checkbox"/> No	
6. Waste Treatment Systems	<input type="checkbox"/> Yes <input checked="" type="checkbox"/> No	
7. Clarifiers/ Separators	<input type="checkbox"/> Yes <input checked="" type="checkbox"/> No	
8. Air stacks/ Vents/ Odors	<input type="checkbox"/> Yes <input checked="" type="checkbox"/> No	
9. Floor Drains/Sumps	<input type="checkbox"/> Yes <input checked="" type="checkbox"/> No	
10. Stained Soil/ Impacted Vegetation	<input type="checkbox"/> Yes <input checked="" type="checkbox"/> No	
11. On-site OWNED Electrical Transformers	<input type="checkbox"/> Yes <input checked="" type="checkbox"/> No	
12. Hydraulic lifts/ Elevators	<input type="checkbox"/> Yes <input checked="" type="checkbox"/> No	
13. Dry Cleaning Operations	<input type="checkbox"/> Yes <input checked="" type="checkbox"/> No	
14. Wetlands/ Flooding	<input type="checkbox"/> Yes <input checked="" type="checkbox"/> No	
15. Oil/ Gas/ Water/ Monitoring Wells	<input type="checkbox"/> Yes <input checked="" type="checkbox"/> No	
16. Environmental Cleanups	<input type="checkbox"/> Yes <input checked="" type="checkbox"/> No	
17. Environmental Permits	<input type="checkbox"/> Yes <input checked="" type="checkbox"/> No	If yes, please describe and ATTACH ALL COPIES of permits. Please attach last three waste manifests.
a) Industrial Discharge	<input type="checkbox"/> Yes <input type="checkbox"/> No	
b) POTW (NPDES)	<input type="checkbox"/> Yes <input type="checkbox"/> No	
c) Hazardous Waste Generator	<input type="checkbox"/> Yes <input type="checkbox"/> No	
d) Air Quality	<input type="checkbox"/> Yes <input type="checkbox"/> No	
e) Flammable Materials	<input type="checkbox"/> Yes <input type="checkbox"/> No	
f) AST/UST	<input type="checkbox"/> Yes <input type="checkbox"/> No	
g) Waste Manifest(s)	<input type="checkbox"/> Yes <input type="checkbox"/> No	
h) Other	<input type="checkbox"/> Yes <input type="checkbox"/> No	

7. OFF SITE ENVIRONMENTAL CONCERNS

Are you aware of any of the following conditions, either past or present, Adjacent to the site?		
Condition	Response	If yes, please describe
Gasoline Stations	<input type="checkbox"/> Yes <input checked="" type="checkbox"/> No	
Dry Cleaners	<input type="checkbox"/> Yes <input checked="" type="checkbox"/> No	
Industrial Uses	<input checked="" type="checkbox"/> Yes <input type="checkbox"/> No	Site located near Cameron Beach / Green Rail yards.
Other	<input checked="" type="checkbox"/> Yes <input type="checkbox"/> No	Adjacent to BART station & tunnel



Phase I Site Assessment Report
Muni Upper Yard, San Francisco, California 94112

APPENDIX C

EDR City Directory Abstract

Balboa Park Upper Yard

2344 San Jose Avenue
San Francisco, CA 94112

Inquiry Number: 3521878.6
February 18, 2013

The EDR-City Directory Abstract

TABLE OF CONTENTS

SECTION

Executive Summary

Findings

Thank you for your business.
Please contact EDR at 1-800-352-0050
with any questions or comments.

Disclaimer - Copyright and Trademark Notice

This Report contains certain information obtained from a variety of public and other sources reasonably available to Environmental Data Resources, Inc. It cannot be concluded from this Report that coverage information for the target and surrounding properties does not exist from other sources. **NO WARRANTY EXPRESSED OR IMPLIED, IS MADE WHATSOEVER IN CONNECTION WITH THIS REPORT. ENVIRONMENTAL DATA RESOURCES, INC. SPECIFICALLY DISCLAIMS THE MAKING OF ANY SUCH WARRANTIES, INCLUDING WITHOUT LIMITATION, MERCHANTABILITY OR FITNESS FOR A PARTICULAR USE OR PURPOSE. ALL RISK IS ASSUMED BY THE USER. IN NO EVENT SHALL ENVIRONMENTAL DATA RESOURCES, INC. BE LIABLE TO ANYONE, WHETHER ARISING OUT OF ERRORS OR OMISSIONS, NEGLIGENCE, ACCIDENT OR ANY OTHER CAUSE, FOR ANY LOSS OR DAMAGE, INCLUDING, WITHOUT LIMITATION, SPECIAL, INCIDENTAL, CONSEQUENTIAL, OR EXEMPLARY DAMAGES. ANY LIABILITY ON THE PART OF ENVIRONMENTAL DATA RESOURCES, INC. IS STRICTLY LIMITED TO A REFUND OF THE AMOUNT PAID FOR THIS REPORT.** Purchaser accepts this Report "AS IS". Any analyses, estimates, ratings, environmental risk levels or risk codes provided in this Report are provided for illustrative purposes only, and are not intended to provide, nor should they be interpreted as providing any facts regarding, or prediction or forecast of, any environmental risk for any property. Only a Phase I Environmental Site Assessment performed by an environmental professional can provide information regarding the environmental risk for any property. Additionally, the information provided in this Report is not to be construed as legal advice.

Copyright 2013 by Environmental Data Resources, Inc. All rights reserved. Reproduction in any media or format, in whole or in part, of any report or map of Environmental Data Resources, Inc. or its affiliates is prohibited without prior written permission.

EDR and its logos (including Sanborn and Sanborn Map) are trademarks of Environmental Data Resources, Inc. or its affiliates. All other trademarks used herein are the property of their respective owners.

EXECUTIVE SUMMARY

DESCRIPTION

Environmental Data Resources, Inc.'s (EDR) City Directory Abstract is a screening tool designed to assist environmental professionals in evaluating potential liability on a target property resulting from past activities. EDR's City Directory Abstract includes a search and abstract of available city directory data. For each address, the directory lists the name of the corresponding occupant at five year intervals.

Business directories including city, cross reference and telephone directories were reviewed, if available, at approximately five year intervals for the years spanning 1910 through 2012. This report compiles information gathered in this review by geocoding the latitude and longitude of properties identified and gathering information about properties within 332 feet of the target property.

A summary of the information obtained is provided in the text of this report.

RESEARCH SUMMARY

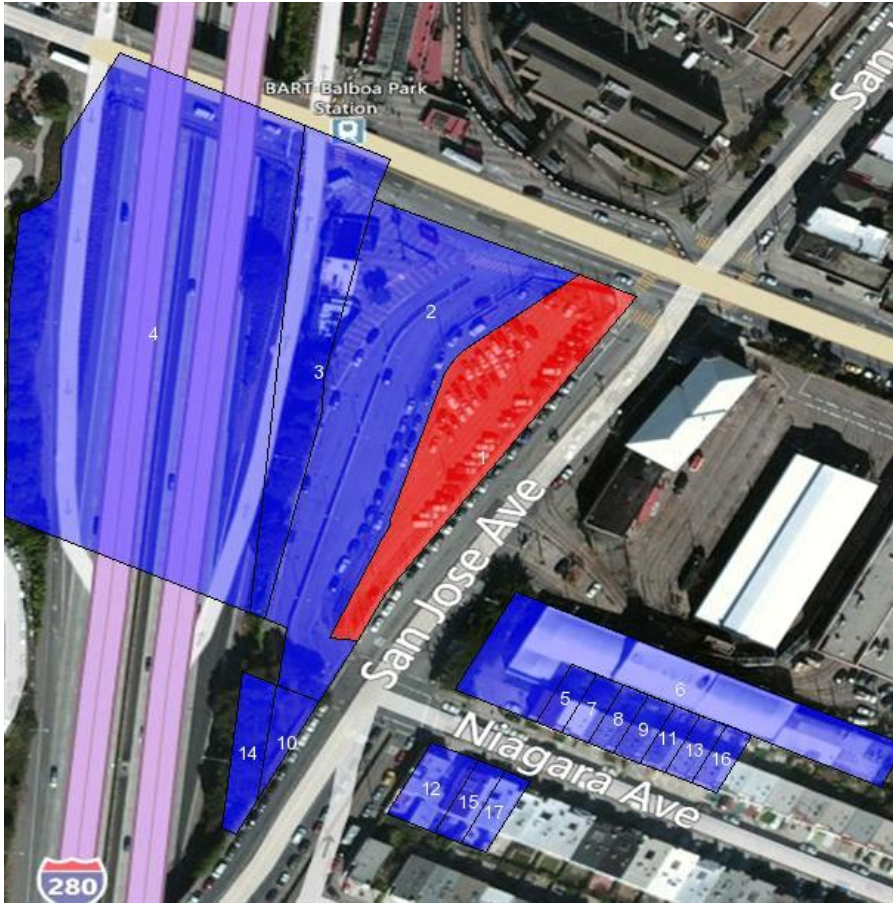
The following research sources were consulted in the preparation of this report. An "X" indicates where information was identified in the source and provided in this report.

<u>Year</u>	<u>Source</u>	<u>TP</u>	<u>Adjoining</u>	<u>Text Abstract</u>	<u>Source Image</u>
2012	Cole Information Services	-	-	-	-
	Cole Information Services	-	X	X	-
2007	Cole Information Services	-	X	X	-
2006	Haines Company, Inc.	-	X	X	-
2000	Haines & Company	-	X	X	-
1993	Pacific Bell	-	X	X	-
1990	Pacific Bell	-	X	X	-
1985	Pacific Bell	-	X	X	-
1982	R. L. Polk & Co.	-	X	X	-
1977	Pacific Telephone	-	X	X	-
1971	Pacific Telephone	-	X	X	-
1966	R. L. Polk & Co.	-	X	X	-
1962	R. L. Polk & Co.	-	X	X	-
1958	R. L. Polk & Co.	-	X	X	-
1953	R. L. Polk & Co.	-	X	X	-
1949	R. L. Polk & Co.	-	X	X	-
1944	R. L. Polk & Co.	-	X	X	-
1940	R. L. Polk & Co.	-	X	X	-
1935	R. L. Polk & Co.	-	X	X	-
1930	R. L. Polk & Co.	-	X	X	-
1925	R. L. Polk & Co.	-	X	X	-
1920	Pacific Telephone	-	X	X	-
1915	H. S. Crocker Co.	-	X	X	-
1910	H. S. Crocker Co.	-	X	X	-

EXECUTIVE SUMMARY

MAP INFORMATION

The Overview Map provides information on nearby property parcel boundaries. Properties on this map that were selected for research are listed below the map.



SELECTED ADDRESSES

The following addresses were selected by the client. Detailed findings are contained in the findings section. An "X" indicates where information was identified.

<u>Address</u>	<u>Type</u>	<u>Findings</u>
2344 San Jose Avenue	Map ID: 1	
2401 SAN JOSE AVE	Map ID: 12	X
385 NIAGARA AVE	Map ID: 15	X
379 NIAGARA AVE	Map ID: 17	X
380 NIAGARA AVE	Map ID: 5	X
2377 SAN JOSE AVE	Map ID: 6	X
500 Geneva Ave	Client Entered	

EXECUTIVE SUMMARY

<u>Address</u>	<u>Type</u>	<u>Findings</u>
2275 San Jose Ave	Client Entered	X
2322 San Jose Ave	Client Entered	X
2174 San Jose Ave	Client Entered	

FINDINGS

TARGET PROPERTY INFORMATION

ADDRESS

2344 San Jose Avenue
San Francisco, CA 94112

FINDINGS DETAIL

Target Property research detail.

FINDINGS

ADJOINING PROPERTY DETAIL

The following Adjoining Property addresses were researched for this report. Detailed findings are provided for each address.

GENEVA AVE

400 GENEVA AVE

<u>Year</u>	<u>Uses</u>	<u>Source</u>
1910	Gardiner Charles C cond r	H. S. Crocker Co.

424 GENEVA AVE

<u>Year</u>	<u>Uses</u>	<u>Source</u>
1944	GARITITY GERTRUDE WAITER H	R. L. Polk & Co.
1930	GARRITY RICHD (GERTRUDE) CONDH	R. L. Polk & Co.
1915	Hackendorn J J elk r	H. S. Crocker Co.

425 GENEVA AVE

<u>Year</u>	<u>Uses</u>	<u>Source</u>
2007	SAN FRANCISCO MUNICIPAL RAILWAY	Cole Information Services
	CITY COUNTYSAN FRANCISCO	Cole Information Services
1940	BISHOP ELLEN DO CTRR	R. L. Polk & Co.
	BISHOP MILDRED ELK NATL DOLLAR STORESR	R. L. Polk & Co.
1935	ELLEN MACH OPR R	R. L. Polk & Co.
	MARSHALL SYLVAIN (EDNA) CAR REPRH	R. L. Polk & Co.
1930	BISHOP ELLA MACH OPR R	R. L. Polk & Co.
	BISHOP GERTRUDE MRSH	R. L. Polk & Co.
	HOWARD M MTRMN R	R. L. Polk & Co.
	STONER ISAAC CONDR	R. L. Polk & Co.
1925	DEVEAU JOS B CAR REPRR	R. L. Polk & Co.
	GUNDERSON LOUIS PR	R. L. Polk & Co.
	HARTER GEOR	R. L. Polk & Co.
	MOORE SAM (MARAT)R	R. L. Polk & Co.
	ROBBERS FREDR	R. L. Polk & Co.
	SLOANE LOUISR	R. L. Polk & Co.
	STONER JOHN PR	R. L. Polk & Co.
	WADE OLIVER R R	R. L. Polk & Co.
	CHRIS JOS SR	R. L. Polk & Co.
	CASTRO LOUISR	R. L. Polk & Co.
	CAMERON WMR	R. L. Polk & Co.

FINDINGS

<u>Year</u>	<u>Uses</u>	<u>Source</u>
1925	BISHOP GERTRUDE MRSH	R. L. Polk & Co.
	BOTOLPEN BOBTR	R. L. Polk & Co.
1915	Kinsley Jas B Lillian h	H. S. Crocker Co.
	Vizzard Mary I r	H. S. Crocker Co.
	Vizzard Thos F carp r	H. S. Crocker Co.

430 GENEVA AVE

<u>Year</u>	<u>Uses</u>	<u>Source</u>
1935	HENDRICKS MARTIN LABH	R. L. Polk & Co.

496 GENEVA AVE

<u>Year</u>	<u>Uses</u>	<u>Source</u>
1949	CONNELL GEO J (LORRAINE) ELECTNH	R. L. Polk & Co.

505 GENEVA AVE

<u>Year</u>	<u>Uses</u>	<u>Source</u>
2000	No Current Listings	Haines & Company
1990	TECHNICAL SERVICES	Pacific Bell
1985	BBITECHNICAL SERVICES	Pacific Bell

509 GENEVA AVE

<u>Year</u>	<u>Uses</u>	<u>Source</u>
1962	Munder Chas	R. L. Polk & Co.
1958	Kendzierski Theo A	R. L. Polk & Co.
1953	Vanck Chas G	R. L. Polk & Co.
1949	PARKER ALBT B (FREIDA L) BOTTLERH	R. L. Polk & Co.
	PARIKER YBLJ RI MLNR R	R. L. Polk & Co.
1940	ALBT B (FRIEDA) BOTTLER H	R. L. Polk & Co.
1935	OVERALL JAS O (ROBBIE) MTRMNH	R. L. Polk & Co.
1930	COSTELLA JAS (EVANGELINE)H	R. L. Polk & Co.

535 GENEVA AVE

<u>Year</u>	<u>Uses</u>	<u>Source</u>
1962	Reagan Margt C Mrs	R. L. Polk & Co.
	Ross Ella Mrs	R. L. Polk & Co.
	SChneider Bernard	R. L. Polk & Co.
1958	Castellanos Augustin R	R. L. Polk & Co.
	Schneider C Bernard	R. L. Polk & Co.
1953	Apartments	R. L. Polk & Co.
	Schneider C Bernard	R. L. Polk & Co.

FINDINGS

<u>Year</u>	<u>Uses</u>	<u>Source</u>
1953	Reagan Margt C	R. L. Polk & Co.
	Balkovich John F	R. L. Polk & Co.
1949	C BERNARD (FRANCES) CLK H	R. L. Polk & Co.
	BALKOVICH JOHN L (SOPHIE) STEELWKRH	R. L. Polk & Co.
	CAVANAGH JOHN L (MAURENE) LABH	R. L. Polk & Co.
	CAVANAGH JACK L DISPR CMTCOR	R. L. Polk & Co.
	R	R. L. Polk & Co.
1944	BARNER WM A (EVELYN) MACHR	R. L. Polk & Co.
1940	YOUNT ANDW T ELK HILLS BROS COFFEER	R. L. Polk & Co.
	YOUNT MARION EMP MSRYCOH	R. L. Polk & Co.
	YOUNT MARY B MRS	R. L. Polk & Co.
1935	ENSLEY JAS A (GEORGIA) CONDH	R. L. Polk & Co.
	MONTGOMERY H W CONDH	R. L. Polk & Co.

GENEVA/SAN JOSE

GENEVA/SAN JOSE

<u>Year</u>	<u>Uses</u>	<u>Source</u>
1966	GENEVA/SAN JOSE	R. L. Polk & Co.

GENEVA/SAN JOSE AV

GENEVA/SAN JOSE AV

<u>Year</u>	<u>Uses</u>	<u>Source</u>
1962	GENEVA/SAN JOSE AV	R. L. Polk & Co.
1958	GENEVA/SAN JOSE AV	R. L. Polk & Co.
1953	GENEVA/SAN JOSE AV	R. L. Polk & Co.

GENEVA/SAN JOSE ST

GENEVA/SAN JOSE ST

<u>Year</u>	<u>Uses</u>	<u>Source</u>
1982	GENEVA/SAN JOSE ST	R. L. Polk & Co.
1977	GENEVA/SAN JOSE ST	Pacific Telephone
1971	GENEVA/SAN JOSE ST	Pacific Telephone

FINDINGS

GENEVIEVE AVE

388 GENEVIEVE AVE

<u>Year</u>	<u>Uses</u>	<u>Source</u>
2006	KRONENBERGAnne	Haines Company, Inc.

396 GENEVIEVE AVE

<u>Year</u>	<u>Uses</u>	<u>Source</u>
2006	LECHLEITNER	Haines Company, Inc.
	Richard	Haines Company, Inc.

NIAGARA AVE

354 NIAGARA AVE

<u>Year</u>	<u>Uses</u>	<u>Source</u>
2006	:TATE Raymond	Haines Company, Inc.
2000	PANALAGAOLeo M	Haines & Company
	TATE Raymond	Haines & Company
1977	Hodges Wayne F	Pacific Telephone
1971	HODGES ADORNA MRS	Pacific Telephone
1958	Linney Edw J	R. L. Polk & Co.
1953	Balestrieri Mario	R. L. Polk & Co.
1949	MORECI JOHN (FLORENCE) DRH	R. L. Polk & Co.
1944	MCKENNA WM J (LOIS) HD GDNR CITY PARKS DEPTH	R. L. Polk & Co.

357 NIAGARA AVE

<u>Year</u>	<u>Uses</u>	<u>Source</u>
2006	a ARENAS Salvador	Haines Company, Inc.
2000	ARENASSalvador	Haines & Company
1977	Arenas Salvador L	Pacific Telephone
1971	BRIGNOLI LAURA M MRS	Pacific Telephone
1966	Brignoli John P	R. L. Polk & Co.
1962	Brignoli John P B	R. L. Polk & Co.
1958	Brignoli John P	R. L. Polk & Co.
1953	Brignoli John P	R. L. Polk & Co.
1949	BRIGNOLI JOHN P (LAURA) GDNRH	R. L. Polk & Co.
	BRIGNOLI JOHN A GDNRR	R. L. Polk & Co.
1944	CATH JOHN (LAURA)H	R. L. Polk & Co.
1940	DRIGNOLL JOHN (LAURA) GDNRH	R. L. Polk & Co.

FINDINGS

360 NIAGARA AVE

<u>Year</u>	<u>Uses</u>	<u>Source</u>
2006	WUNicky	Haines Company, Inc.
2000	WUNicky	Haines & Company
1990	HO PO YIN	Pacific Bell
1985	MENESES FLORENCE V	Pacific Bell
1977	Malong Marcario B	Pacific Telephone
1971	MALONE MACARIO	Pacific Telephone
1966	Sonneborn Henry	R. L. Polk & Co.
1962	Sonneborn Henry	R. L. Polk & Co.
1958	Sonneborn Henry	R. L. Polk & Co.
1953	Sonneborn Henry	R. L. Polk & Co.
1949	BULLARD RALPH J (JULIA) TRUCKING	R. L. Polk & Co.
1944	BORING DAVID M (MARJORIE) SHIPYDWKR H	R. L. Polk & Co.
	BORING MARJORIE E STEN PULLMAN COR	R. L. Polk & Co.

363 NIAGARA AVE

<u>Year</u>	<u>Uses</u>	<u>Source</u>
2006	VARNI Eugene JJr	Haines Company, Inc.
	Ve RN Eugene	Haines Company, Inc.
2000	VARNI Eugene	Haines & Company
1993	Varni Eugene	Pacific Bell
	Varni Eugene	Pacific Bell
1990	VAMI EUGENE	Pacific Bell
	VAMI EUGENE	Pacific Bell
1985	VARNI EUGENE	Pacific Bell
1977	Varni Eug A	Pacific Telephone
1971	VARNI EUG A	Pacific Telephone
1966	Varni Eug A	R. L. Polk & Co.
1962	Varni Eug A B	R. L. Polk & Co.
1958	Varni Eug A	R. L. Polk & Co.
1953	Ferguson Kenneth C	R. L. Polk & Co.
1949	SCHREMPP ADOLPH ELKR	R. L. Polk & Co.
	FERGUSON KENNETH C (EDNA) ELKH	R. L. Polk & Co.
1944	H	R. L. Polk & Co.
	R	R. L. Polk & Co.
1940	SCHREMPP N MARY B REP PT&TCOO	R. L. Polk & Co.
	BRIGGS OTIS H (MAGGIE)H	R. L. Polk & Co.

FINDINGS

<u>Year</u>	<u>Uses</u>	<u>Source</u>
1940	SCHREMPP HENRY PRS APR	R. L. Polk & Co.

366 NIAGARA AVE

<u>Year</u>	<u>Uses</u>	<u>Source</u>
2006	YUCarey	Haines Company, Inc.
2000	ZHENCarey	Haines & Company
1977	Rodriguez David	Pacific Telephone
1971	BONEQUI PAUL	Pacific Telephone
1966	Kalar Richd L	R. L. Polk & Co.
1962	Mc Dowell Mitchell W	R. L. Polk & Co.
1958	Stratton Page L	R. L. Polk & Co.
1953	OBrien Roy E	R. L. Polk & Co.
1949	BETTY L MRS STEN MORRIS PLAN CO R	R. L. Polk & Co.
	ROY E TMSTR H	R. L. Polk & Co.
1944	OKEDA EDW (OLGA) DEFENSEWKRR	R. L. Polk & Co.

369 NIAGARA AVE

<u>Year</u>	<u>Uses</u>	<u>Source</u>
2006	No Current Listing	Haines Company, Inc.
2000	TSE Yiu	Haines & Company
1977	Mazza Geo	Pacific Telephone
1971	MAZZA GEO	Pacific Telephone
1966	Mazza Geo	R. L. Polk & Co.
1962	Mazza Geo B	R. L. Polk & Co.
1958	Munder Chas	R. L. Polk & Co.
1953	Killinger Erwin O	R. L. Polk & Co.
1949	KILLINGER LOTTIE L CLK E (R) KILLINGERH	R. L. Polk & Co.
	KILLINGER ERWIN (R) (BERTHA) GRO	R. L. Polk & Co.
1944	KILLINGER LOTTIE L EMP OPAR KILLINGER ETWIN (R) (BERTHA) SHIPYDWKRH	R. L. Polk & Co. R. L. Polk & Co.

370 NIAGARA AVE

<u>Year</u>	<u>Uses</u>	<u>Source</u>
2006	GUARDADO Manuel	Haines Company, Inc.
2000	VILLAREALSophla OGUARDADO Manual	Haines & Company Haines & Company
1977	Guardado Manuel	Pacific Telephone
1971	HERNAN PEARL MRS	Pacific Telephone

FINDINGS

<u>Year</u>	<u>Uses</u>	<u>Source</u>
1966	Sares Mike S	R. L. Polk & Co.
1962	Sares Mike S B	R. L. Polk & Co.
1958	Sares Mike S	R. L. Polk & Co.
1953	Sares Mike S	R. L. Polk & Co.
1949	CARLI RENA M SLSWN WEINSTEIN COR	R. L. Polk & Co.
	KEIZER CYNTHIA M PRIV SEC WATERFRONT EMPLOYERS ASRI	R. L. Polk & Co.
	KEIZER EDW F (HENRIETTA) PILERANH	R. L. Polk & Co.
	KEIZER ERNEST F (CYNTHIA) MFRS AGTR3	R. L. Polk & Co.
1944	R SMITH) STEPH S (EVELYN) USCGH	R. L. Polk & Co. R. L. Polk & Co.

375 NIAGARA AVE

<u>Year</u>	<u>Uses</u>	<u>Source</u>
2006	LAMSilu	Haines Company, Inc.
2000	SLAM Siu	Haines & Company
1993	Bowles Chas A	Pacific Bell
1990	BOWLES CHAS A	Pacific Bell
1985	BOWLES CHAS A	Pacific Bell
1977	Bowles Charles A	Pacific Telephone
1971	BOWLES CHARLES A	Pacific Telephone
1966	Bowles Chas A	R. L. Polk & Co.
1962	Bowles Chas A B	R. L. Polk & Co.
1958	Bowles Chas A	R. L. Polk & Co.
1953	Bowles Chas A	R. L. Polk & Co.
1949	MORELLO FRANK C (EMMELENE) CIV ENG US ENGH	R. L. Polk & Co.
1944	MORELLO FRANK C (EMMELENE) ENG USENGH	R. L. Polk & Co.

376 NIAGARA AVE

<u>Year</u>	<u>Uses</u>	<u>Source</u>
2006	a FLOCCHINI Michael	Haines Company, Inc.
1977	Bullwinkel Henry F	Pacific Telephone
1971	BULLWINKEL HENRY F	Pacific Telephone
1966	Bullwinkel Henry F	R. L. Polk & Co.
1962	Bullwinkel Henry F B	R. L. Polk & Co.
1958	Bullwinkel Henry F	R. L. Polk & Co.
1953	Buliwinkel Henry F	R. L. Polk & Co.
1949	BULLWINKEL ENRY F (ANNA) ELKH	R. L. Polk & Co.

FINDINGS

<u>Year</u>	<u>Uses</u>	<u>Source</u>
1944	ROSSI DAVID V (ALICE) AUD U S INT REXH	R. L. Polk & Co.

378 NIAGARA AVE

<u>Year</u>	<u>Uses</u>	<u>Source</u>
1953	Iversen Gustav	R. L. Polk & Co.

379 NIAGARA AVE

Map ID: 17

<u>Year</u>	<u>Uses</u>	<u>Source</u>
2006	a TICZONEvangeline	Haines Company, Inc.
2000	TCZON Evangeline	Haines & Company
1993	Ticzon Evangeline	Pacific Bell
1990	TICZON EVANGELINE	Pacific Bell
1985	TICON EVANGELINE	Pacific Bell
1977	Rosco Juanito	Pacific Telephone
1971	FABBRI ALFIO	Pacific Telephone
1966	Fabbri Alfeo	R. L. Polk & Co.
1962	Fabbri Alfeo B	R. L. Polk & Co.
1958	Riewerts John M jr	R. L. Polk & Co.
1949	PORRAZZO VINCENT G (MYRTLE) PRINTER SF NEWSR	R. L. Polk & Co.
	VINCENT G (MARY) LAB H	R. L. Polk & Co.
1944	COOPER SHELDON G (DOROTHY) (COOPER & VANI SEE ON-SALE BEVERAGE COUNCIL INC	R. L. Polk & Co.

380 NIAGARA AVE

Map ID: 5

<u>Year</u>	<u>Uses</u>	<u>Source</u>
2006	e BENTONGeorgle	Haines Company, Inc.
2000	BENTONGeorgle	Haines & Company
1977	Benton Georgie Mrs	Pacific Telephone
1971	BENTON GEORGIE MRS	Pacific Telephone
1966	Quick Jas P	R. L. Polk & Co.
1962	Ralls Pearl Mrs B	R. L. Polk & Co.
1958	Quezada Ruben A	R. L. Polk & Co.
1953	Robertson Thos F	R. L. Polk & Co.
1949	MILLER DOROTHY A SLSWNR	R. L. Polk & Co.
1944	H	R. L. Polk & Co.

FINDINGS

385 NIAGARA AVE

Map ID: 15

<u>Year</u>	<u>Uses</u>	<u>Source</u>
2006	OUTIERREZ Elias	Haines Company, Inc.
2000	OGUTTIERREZ Elias	Haines & Company
1985	GUTIERREZ ELIAS	Pacific Bell
1977	Gutierrez Elias M	Pacific Telephone
1971	RUSTICE EVELYN G MRS	Pacific Telephone
1966	Rustice Evelyn G Mrs	R. L. Polk & Co.
1962	Rustice Jas F B	R. L. Polk & Co.
1958	Rustice Jas F	R. L. Polk & Co.
1953	Rustice Jas F	R. L. Polk & Co.
1944	RUSTICE JAS F (EVELYN) FIREMN SFFDH	R. L. Polk & Co.
1940	COLBERT WM C (ERMA) WTCHMNH	R. L. Polk & Co.

NIAGARA/SAN JOSE

NIAGARA/SAN JOSE

<u>Year</u>	<u>Uses</u>	<u>Source</u>
1966	NIAGARA/SAN JOSE	R. L. Polk & Co.
1962	NIAGARA/SAN JOSE	R. L. Polk & Co.

NIAGARA/SAN JOSE ST

NIAGARA/SAN JOSE ST

<u>Year</u>	<u>Uses</u>	<u>Source</u>
1977	NIAGARA/SAN JOSE ST	Pacific Telephone
1971	NIAGARA/SAN JOSE ST	Pacific Telephone

SAN JOSE

2298 SAN JOSE

<u>Year</u>	<u>Uses</u>	<u>Source</u>
1910	Satorius Lorenz liquors	H. S. Crocker Co.

2320 SAN JOSE

<u>Year</u>	<u>Uses</u>	<u>Source</u>
1944	DOROTHY R	R. L. Polk & Co.

FINDINGS

SAN JOSE AVE

2275 SAN JOSE AVE

<u>Year</u>	<u>Uses</u>	<u>Source</u>
2012	CAFE EXPRESS	Cole Information Services

San Jose Ave

2275 San Jose Ave

Client Entered

<u>Year</u>	<u>Uses</u>	<u>Source</u>
2006	GENEVASTATION	Haines Company, Inc.
2000	ALL STAR DONUT	Haines & Company
1993	VARNIS DONUT TIME	Pacific Bell
1990	VARNI S DONUT TIME	Pacific Bell
1985	VARNI S DONUT TIME	Pacific Bell
1977	Varnis Coffee Shop	Pacific Telephone
1971	NO RETURN	Pacific Telephone
1966	Donut Time restr	R. L. Polk & Co.

SAN JOSE AVE

2296 SAN JOSE AVE

<u>Year</u>	<u>Uses</u>	<u>Source</u>
1910	Cagis Joseph waiter r	H. S. Crocker Co.
	Sarandis John restaurant	H. S. Crocker Co.
	Malta Spiro waiter r	H. S. Crocker Co.

2298 SAN JOSE AVE

<u>Year</u>	<u>Uses</u>	<u>Source</u>
1944	SAMBRAILO JOHN (NORA) RESTR	R. L. Polk & Co.
1940	GENEVA RESTAURANT (JOHN SAMBRAILO MICHILLETAK)	R. L. Polk & Co.
1935	SAMBRAILO JOHN S (NORA) RESTR	R. L. Polk & Co.
1930	GENEVA CAFE (JOS GLAVICH JOHN CANBRAILS)	R. L. Polk & Co.
1925	SAMBRALLO & GLAVICH (JOHN SAMBRALIO JAS GLAVICH) RESTR	R. L. Polk & Co.

2301 SAN JOSE AVE

<u>Year</u>	<u>Uses</u>	<u>Source</u>
2000	No Current Listings	Haines & Company
1990	S F MUNI SHOPMENS CREDIT UNION	Pacific Bell

FINDINGS

<u>Year</u>	<u>Uses</u>	<u>Source</u>
1985	S F MUNI SHOPMENS CREDIT UNION	Pacific Bell
1977	San Francisco Muni Shopmens Credit Union	Pacific Telephone
	S F Muni Ry Elec Transit Supvr	Pacific Telephone
	S F Muni Ry Supt Of Equip	Pacific Telephone
	S F Muni Ry Div Supt	Pacific Telephone
	Rooms	Pacific Telephone
	Muni Ry Car Barn	Pacific Telephone
1971	S F MUNI RY ELEC TRANSIT SUPVR	Pacific Telephone
	S F MUNI RY SUPT OF EQUIP	Pacific Telephone
	S F MUNI RY DIV SUPT	Pacific Telephone
	ROOMS	Pacific Telephone
	MUNI RY CAR BARN	Pacific Telephone
	SAN FRANCISCO MUNICIPAL SHOPMENS CREDIT UNION	Pacific Telephone
	S F MUNI RY CONSTN ENGS	Pacific Telephone
1966	City Municipal Ry car barn	R. L. Polk & Co.
	SF Municipal Shopmens Credit Union	R. L. Polk & Co.
1962	City Municipal Ry car barn	R. L. Polk & Co.
	SF Municipal Shopmens Credit Union	R. L. Polk & Co.
1958	City Municipal Ry car barn	R. L. Polk & Co.
	City & County Civil Defense Battalion No 9	R. L. Polk & Co.
1953	SF City Mun Ry car barn	R. L. Polk & Co.
1949	SAN FRANCISCO CITY AND COUNTY GOVERNMENT	R. L. Polk & Co.
1940	MARKET STREET RAILWAY BARN	R. L. Polk & Co.
1930	STREET RAILWAY	R. L. Polk & Co.

2306 SAN JOSE AVE

<u>Year</u>	<u>Uses</u>	<u>Source</u>
1944	H	R. L. Polk & Co.
1940	SATORIUS LORENZ (CATH A) STOREKPR MS RY COH	R. L. Polk & Co.
1935	SATORIUS LORENZ (OATH) ELKH	R. L. Polk & Co.
	SATORIUS MARGT ELKR	R. L. Polk & Co.
1930	SATORIUS VERONICA TCHRR	R. L. Polk & Co.
	SATORIUS ROSE BKPRR	R. L. Polk & Co.
	SATORIUS MARGT ELKR	R. L. Polk & Co.
	SATORIUS LORENZ (CATH) REPRMN M S RY COH	R. L. Polk & Co.

FINDINGS

<u>Year</u>	<u>Uses</u>	<u>Source</u>
1925	R	R. L. Polk & Co.
	SATORIUS LORENZ (KATH) LABH	R. L. Polk & Co.
	SATORIUS JOS LABR	R. L. Polk & Co.
	MELLO ARTH F ELECTNR	R. L. Polk & Co.
	MELLO LOUIS LABR	R. L. Polk & Co.
1915	Claffey John J mach ir	H. S. Crocker Co.
1910	Nagle Paul cond r	H. S. Crocker Co.
	Kelly Helen Miss r	H. S. Crocker Co.
	Hartman Lester M mtrman U RR r	H. S. Crocker Co.

2312 SAN JOSE AVE

<u>Year</u>	<u>Uses</u>	<u>Source</u>
1944	SCHILLER JOS C (BERNICE) CONDH	R. L. Polk & Co.
1940	SCH JOS C (BERNICE B) CONDH	R. L. Polk & Co.
1935	MAGNUSON GUST N (EVY C) DISPRH	R. L. Polk & Co.
1930	DALE WM GH	R. L. Polk & Co.
1925	OLE OLE A LABR	R. L. Polk & Co.
	OLSON JACOB P SEAMNR	R. L. Polk & Co.
	OLSON CLARICE BKPR DAILY HERALDR	R. L. Polk & Co.
	OLE WALTER (CLARLCE) FORMN MARKET ST RYH	R. L. Polk & Co.
1920	OLOH WALTER C R	Pacific Telephone

2316 SAN JOSE AVE

<u>Year</u>	<u>Uses</u>	<u>Source</u>
1944	KONIG WM C MTRMNH	R. L. Polk & Co.
	ILECEN FR	R. L. Polk & Co.
1940	SPILLANE DANL (BLANCHE A)H	R. L. Polk & Co.
1935	BLAKE HENRY S LABH	R. L. Polk & Co.
1930	MIKESELL CLYDE G (LAURA) MACHH	R. L. Polk & Co.
1925	TAYLOR LILLIAN HAIRDRSR	R. L. Polk & Co.

2320 SAN JOSE AVE

<u>Year</u>	<u>Uses</u>	<u>Source</u>
1944	HARLEY N (HELEN) BARBER	R. L. Polk & Co.
	THOMAS DOROTHY M ELK RY EXP AGEYR	R. L. Polk & Co.
	THOMAS	R. L. Polk & Co.
1940	HARRISON P MATTLE E MRS NURSER	R. L. Polk & Co.
	THOMAS HARLEY N (HELEN) BARBER	R. L. Polk & Co.

FINDINGS

<u>Year</u>	<u>Uses</u>	<u>Source</u>
1935	CHASE ANDW (NORA) LABH	R. L. Polk & Co.
1930	CHASE ANDW J (CORA) MACH HDH	R. L. Polk & Co.
1925	CHASE ANDREW J (NORA D) LABH	R. L. Polk & Co.
	CHASE JORDAN ELKR	R. L. Polk & Co.
	CHASE KATH STENR	R. L. Polk & Co.

San Jose Ave

2322 San Jose Ave

Client Entered

<u>Year</u>	<u>Uses</u>	<u>Source</u>
1944	RAFTER GEO E (LENA M) WLDRH	R. L. Polk & Co.
1940	LAWRENCE E (MARIE) AMP M S BY CO H	R. L. Polk & Co.
1935	ROGERTS WM P (RACHEL)H	R. L. Polk & Co.
1930	RO RACHAEL MRS H	R. L. Polk & Co.
1925	ROGERS WM P (RACHEL) LABH	R. L. Polk & Co.
	ROGERS JAS C LABR	R. L. Polk & Co.

SAN JOSE AVE

2326 SAN JOSE AVE

<u>Year</u>	<u>Uses</u>	<u>Source</u>
1910	Burnett G C cond r	H. S. Crocker Co.
	Mc Grath J J mtrman r	H. S. Crocker Co.
	Barnett Garrett r	H. S. Crocker Co.

2332 SAN JOSE AVE

<u>Year</u>	<u>Uses</u>	<u>Source</u>
1944	HARRISON MATTIE R	R. L. Polk & Co.
	HAUG ALBT (MINNIE W) ELECTNH	R. L. Polk & Co.
1940	HALUGH ALBT (MINNIE W) FORMN M S RY COH	R. L. Polk & Co.
1935	R	R. L. Polk & Co.
	ROMA JULIO (AMANDA) LABH	R. L. Polk & Co.
1930	H	R. L. Polk & Co.
1925	HAUG ALBERT FORMN MKT ST BYR	R. L. Polk & Co.
1915	Nicora Pietro lab h	H. S. Crocker Co.
1910	Haynes Reuel S lab r	H. S. Crocker Co.
	Mc Donald Beecher cond r	H. S. Crocker Co.
	Wilder Gaylon C elk r	H. S. Crocker Co.
	Wilder Isaac L carp r	H. S. Crocker Co.

FINDINGS

2345 SAN JOSE AVE

<u>Year</u>	<u>Uses</u>	<u>Source</u>
1925	SCHIAVI LOUIS (ROSE) LABH	R. L. Polk & Co.

2364 SAN JOSE AVE

<u>Year</u>	<u>Uses</u>	<u>Source</u>
1940	CHASSEUR FRANKR	R. L. Polk & Co.

2377 SAN JOSE AVE

<u>Year</u>	<u>Uses</u>	<u>Source</u>
2012	DANIEL KILPATRICK STUDIO	Cole Information Services
	ARK NEON & ELECTRIC SIGN CO	Cole Information Services
2007	ARK NEON & ELECTRIC SIGN CO	Cole Information Services
	GALLERY X	Cole Information Services
2006	ARKNEON&ELC	Haines Company, Inc.
	SGNCO GAMEZFrancisco	Haines Company, Inc.
	GAMEZFRANCISCO	Haines Company, Inc.
	MCGONEGALShaun	Haines Company, Inc.
	SAMANIEGO Manuel	Haines Company, Inc.
2000	ARKNEON&ELCSGN	Haines & Company
	GAMEZFrancisco	Haines & Company
	KOOLKATZ	Haines & Company
	PRODUCTIONS	Haines & Company
	MCGONEGALShain	Haines & Company
	PEARSON LOUIS	Haines & Company
	STUDIOARCALIUS	Haines & Company
1993	MARSH THOMAS	Pacific Bell
	INCLINE GLASS	Pacific Bell
	Gamez Francisco	Pacific Bell
	ARK NEON & ELECTRIC SIGN CO	Pacific Bell
1990	BUTTONMANIA	Pacific Bell
	AMEAZ FRANCISCO	Pacific Bell
	MARSH THOMAS	Pacific Bell
	POPE BARBARA	Pacific Bell
	SHANABROOK DAVID H	Pacific Bell
	OLESFAMI CAMRAN	Pacific Bell
	SEGROVE UPHOLSTERY	Pacific Bell
1985	AJ MILEY ENTERTAINMENT SERVICE	Pacific Bell
	MARSH THOMAS	Pacific Bell
	POTK JAMES D	Pacific Bell

FINDINGS

<u>Year</u>	<u>Uses</u>	<u>Source</u>
1985	B P IRODUCTIONS	Pacific Bell
	ARK SIGN	Pacific Bell
	GLASSWEAR	Pacific Bell
	GAMEZ FRANCISCO	Pacific Bell
	FLEISCHER CHERE	Pacific Bell
1977	Turko Persian Rug Co clns	Pacific Telephone
1971	TURKO PERSIAN RUG CO CLNS	Pacific Telephone
1966	Turko Persian Rug Co cns	R. L. Polk & Co.
1962	Turko Persian Rug Co cns	R. L. Polk & Co.
1958	Turko Persian Rug Co cln dept	R. L. Polk & Co.
1953	Turko Persian Rug Co Plant	R. L. Polk & Co.

2396 SAN JOSE AVE

<u>Year</u>	<u>Uses</u>	<u>Source</u>
1925	WEST A C H	R. L. Polk & Co.

2400 SAN JOSE AVE

<u>Year</u>	<u>Uses</u>	<u>Source</u>
1953	Patt Jas	R. L. Polk & Co.
1940	BLAHNIK OATH MRS COAL	R. L. Polk & Co.
1935	BLAHNIK CATH A MRS COAL	R. L. Polk & Co.

2401 SAN JOSE AVE

<u>Year</u>	<u>Uses</u>	<u>Source</u>
2007	G & M MARKET INC	Cole Information Services
2006	CHAUKShu	Haines Company, Inc.
	LEICan Yao	Haines Company, Inc.
	a LIANGYu	Haines Company, Inc.
	WUAIYuan	Haines Company, Inc.
2000	LI Cal Qing	Haines & Company
	LIANG Yu	Haines & Company
1993	Kang Don Su	Pacific Bell
1990	KANG DON SU	Pacific Bell
1985	BUTLER JOHN	Pacific Bell
1977	Butler John P	Pacific Telephone
1971	BUTLER JOHN P	Pacific Telephone
1966	Butler John P	R. L. Polk & Co.
1962	Butler John P	R. L. Polk & Co.
1958	Butler John P	R. L. Polk & Co.

FINDINGS

<u>Year</u>	<u>Uses</u>	<u>Source</u>
1953	Richardson Fred A	R. L. Polk & Co.
1935	SPRING VALLEY LUMBER YARD E D CONOLLEY PRES H W BODE SEC	R. L. Polk & Co.
1930	SPRING VALLEY LUMBER YARD E D CONOLLEY MGR	R. L. Polk & Co.
	BODE GRAVEL CO H W BODE PRES	R. L. Polk & Co.

SAN JOSE/NIAGARA AV

SAN JOSE/NIAGARA AV

<u>Year</u>	<u>Uses</u>	<u>Source</u>
1977	SAN JOSE/NIAGARA AV	Pacific Telephone
1971	SAN JOSE/NIAGARA AV	Pacific Telephone
1966	SAN JOSE/NIAGARA AV	R. L. Polk & Co.
1962	SAN JOSE/NIAGARA AV	R. L. Polk & Co.
1958	SAN JOSE/NIAGARA AV	R. L. Polk & Co.
1953	SAN JOSE/NIAGARA AV	R. L. Polk & Co.

FINDINGS

TARGET PROPERTY: ADDRESS NOT IDENTIFIED IN RESEARCH SOURCE

The following Target Property addresses were researched for this report, and the addresses were not identified in the research source.

Address Researched

2344 San Jose Avenue

Address Not Identified in Research Source

2012, 2007, 2006, 2000, 1993, 1990, 1985, 1982, 1977, 1971, 1966, 1962, 1958, 1953, 1949, 1944, 1940, 1935, 1930, 1925, 1920, 1915, 1910

ADJOINING PROPERTY: ADDRESSES NOT IDENTIFIED IN RESEARCH SOURCE

The following Adjoining Property addresses were researched for this report, and the addresses were not identified in research source.

Address Researched

GENEVA/SAN JOSE

GENEVA/SAN JOSE AV

GENEVA/SAN JOSE ST

NIAGARA/SAN JOSE

NIAGARA/SAN JOSE ST

SAN JOSE/NIAGARA AV

2174 San Jose Ave

2275 San Jose Ave

2275 SAN JOSE AVE

2296 SAN JOSE AVE

2298 SAN JOSE

2298 SAN JOSE AVE

2301 SAN JOSE AVE

2306 SAN JOSE AVE

2312 SAN JOSE AVE

2316 SAN JOSE AVE

2320 SAN JOSE

2320 SAN JOSE AVE

2322 San Jose Ave

2326 SAN JOSE AVE

Address Not Identified in Research Source

2012, 2007, 2006, 2000, 1993, 1990, 1985, 1982, 1977, 1971, 1962, 1958, 1953, 1949, 1944, 1940, 1935, 1930, 1925, 1920, 1915, 1910

2012, 2007, 2006, 2000, 1993, 1990, 1985, 1982, 1977, 1971, 1966, 1949, 1944, 1940, 1935, 1930, 1925, 1920, 1915, 1910

2012, 2007, 2006, 2000, 1993, 1990, 1985, 1966, 1962, 1958, 1953, 1949, 1944, 1940, 1935, 1930, 1925, 1920, 1915, 1910

2012, 2007, 2006, 2000, 1993, 1990, 1985, 1982, 1977, 1971, 1958, 1953, 1949, 1944, 1940, 1935, 1930, 1925, 1920, 1915, 1910

2012, 2007, 2006, 2000, 1993, 1990, 1985, 1982, 1966, 1962, 1958, 1953, 1949, 1944, 1940, 1935, 1930, 1925, 1920, 1915, 1910

2012, 2007, 2006, 2000, 1993, 1990, 1985, 1982, 1949, 1944, 1940, 1935, 1930, 1925, 1920, 1915, 1910

2012, 2007, 2006, 2000, 1993, 1990, 1985, 1982, 1977, 1971, 1966, 1962, 1958, 1953, 1949, 1944, 1940, 1935, 1930, 1925, 1920, 1915, 1910

2012, 2007, 1982, 1962, 1958, 1953, 1949, 1944, 1940, 1935, 1930, 1925, 1920, 1915, 1910

2007, 2006, 2000, 1993, 1990, 1985, 1982, 1977, 1971, 1966, 1962, 1958, 1953, 1949, 1944, 1940, 1935, 1930, 1925, 1920, 1915, 1910

2012, 2007, 2006, 2000, 1993, 1990, 1985, 1982, 1977, 1971, 1966, 1962, 1958, 1953, 1949, 1944, 1940, 1935, 1930, 1925, 1920, 1915

2012, 2007, 2006, 2000, 1993, 1990, 1985, 1982, 1977, 1971, 1966, 1962, 1958, 1953, 1949, 1944, 1940, 1935, 1930, 1925, 1920, 1915

2012, 2007, 2006, 2000, 1993, 1990, 1985, 1982, 1977, 1971, 1966, 1962, 1958, 1953, 1949, 1920, 1915, 1910

2012, 2007, 2006, 1993, 1982, 1944, 1935, 1925, 1920, 1915, 1910

2012, 2007, 2006, 2000, 1993, 1990, 1985, 1982, 1977, 1971, 1966, 1962, 1958, 1953, 1949, 1920

2012, 2007, 2006, 2000, 1993, 1990, 1985, 1982, 1977, 1971, 1966, 1962, 1958, 1953, 1949, 1915, 1910

2012, 2007, 2006, 2000, 1993, 1990, 1985, 1982, 1977, 1971, 1966, 1962, 1958, 1953, 1949, 1920, 1915, 1910

2012, 2007, 2006, 2000, 1993, 1990, 1985, 1982, 1977, 1971, 1966, 1962, 1958, 1953, 1949, 1940, 1935, 1930, 1925, 1920, 1915, 1910

2012, 2007, 2006, 2000, 1993, 1990, 1985, 1982, 1977, 1971, 1966, 1962, 1958, 1953, 1949, 1920, 1915, 1910

2012, 2007, 2006, 2000, 1993, 1990, 1985, 1982, 1977, 1971, 1966, 1962, 1958, 1953, 1949, 1920, 1915, 1910

2012, 2007, 2006, 2000, 1993, 1990, 1985, 1982, 1977, 1971, 1966, 1962, 1958, 1953, 1949, 1944, 1940, 1935, 1930, 1925, 1920, 1915

FINDINGS

Address Researched

2332 SAN JOSE AVE

2345 SAN JOSE AVE

2364 SAN JOSE AVE

2377 SAN JOSE AVE

2377 SAN JOSE AVE

2396 SAN JOSE AVE

2400 SAN JOSE AVE

2401 SAN JOSE AVE

2401 SAN JOSE AVE

354 NIAGARA AVE

357 NIAGARA AVE

360 NIAGARA AVE

363 NIAGARA AVE

366 NIAGARA AVE

369 NIAGARA AVE

370 NIAGARA AVE

375 NIAGARA AVE

376 NIAGARA AVE

378 NIAGARA AVE

379 NIAGARA AVE

380 NIAGARA AVE

385 NIAGARA AVE

388 GENEVIEVE AVE

396 GENEVIEVE AVE

400 GENEVA AVE

424 GENEVA AVE

425 GENEVA AVE

425 GENEVA AVE

430 GENEVA AVE

496 GENEVA AVE

Address Not Identified in Research Source

2012, 2007, 2006, 2000, 1993, 1990, 1985, 1982, 1977, 1971, 1966, 1962, 1958, 1953, 1949, 1920

2012, 2007, 2006, 2000, 1993, 1990, 1985, 1982, 1977, 1971, 1966, 1962, 1958, 1953, 1949, 1944, 1940, 1935, 1930, 1920, 1915, 1910

2012, 2007, 2006, 2000, 1993, 1990, 1985, 1982, 1977, 1971, 1966, 1962, 1958, 1953, 1949, 1944, 1935, 1930, 1925, 1920, 1915, 1910

2012, 2007, 1982, 1949, 1944, 1940, 1935, 1930, 1925, 1920, 1915, 1910

2006, 2000, 1993, 1990, 1985, 1982, 1977, 1971, 1966, 1962, 1958, 1953, 1949, 1944, 1940, 1935, 1930, 1925, 1920, 1915, 1910

2012, 2007, 2006, 2000, 1993, 1990, 1985, 1982, 1977, 1971, 1966, 1962, 1958, 1953, 1949, 1944, 1940, 1935, 1930, 1920, 1915, 1910

2012, 2007, 2006, 2000, 1993, 1990, 1985, 1982, 1977, 1971, 1966, 1962, 1958, 1949, 1944, 1930, 1925, 1920, 1915, 1910

2012, 2007, 1982, 1949, 1944, 1940, 1925, 1920, 1915, 1910

2012, 2006, 2000, 1993, 1990, 1985, 1982, 1977, 1971, 1966, 1962, 1958, 1953, 1949, 1944, 1940, 1935, 1930, 1925, 1920, 1915, 1910

2012, 2007, 1993, 1990, 1985, 1982, 1966, 1962, 1940, 1935, 1930, 1925, 1920, 1915, 1910

2012, 2007, 1993, 1990, 1985, 1982, 1935, 1930, 1925, 1920, 1915, 1910

2012, 2007, 1993, 1982, 1940, 1935, 1930, 1925, 1920, 1915, 1910

2012, 2007, 1982, 1935, 1930, 1925, 1920, 1915, 1910

2012, 2007, 1993, 1990, 1985, 1982, 1940, 1935, 1930, 1925, 1920, 1915, 1910

2012, 2007, 1993, 1990, 1985, 1982, 1940, 1935, 1930, 1925, 1920, 1915, 1910

2012, 2007, 1993, 1990, 1985, 1982, 1940, 1935, 1930, 1925, 1920, 1915, 1910

2012, 2007, 1982, 1940, 1935, 1930, 1925, 1920, 1915, 1910

2012, 2007, 2000, 1993, 1990, 1985, 1982, 1940, 1935, 1930, 1925, 1920, 1915, 1910

2012, 2007, 2006, 2000, 1993, 1990, 1985, 1982, 1977, 1971, 1966, 1962, 1958, 1949, 1944, 1940, 1935, 1930, 1925, 1920, 1915, 1910

2012, 2007, 1982, 1953, 1940, 1935, 1930, 1925, 1920, 1915, 1910

2012, 2007, 1993, 1990, 1985, 1982, 1940, 1935, 1930, 1925, 1920, 1915, 1910

2012, 2007, 1993, 1990, 1982, 1949, 1935, 1930, 1925, 1920, 1915, 1910

2012, 2007, 2000, 1993, 1990, 1985, 1982, 1977, 1971, 1966, 1962, 1958, 1953, 1949, 1944, 1940, 1935, 1930, 1925, 1920, 1915, 1910

2012, 2007, 2000, 1993, 1990, 1985, 1982, 1977, 1971, 1966, 1962, 1958, 1953, 1949, 1944, 1940, 1935, 1930, 1925, 1920, 1915, 1910

2012, 2007, 2006, 2000, 1993, 1990, 1985, 1982, 1977, 1971, 1966, 1962, 1958, 1953, 1949, 1944, 1940, 1935, 1930, 1925, 1920, 1915

2012, 2007, 2006, 2000, 1993, 1990, 1985, 1982, 1977, 1971, 1966, 1962, 1958, 1953, 1949, 1940, 1935, 1925, 1920, 1910

2012, 2007, 2006, 2000, 1993, 1990, 1985, 1982, 1977, 1971, 1966, 1962, 1958, 1953, 1949, 1944, 1920, 1910

2012, 2006, 2000, 1993, 1990, 1985, 1982, 1977, 1971, 1966, 1962, 1958, 1953, 1949, 1944, 1940, 1935, 1930, 1925, 1920, 1915, 1910

2012, 2007, 2006, 2000, 1993, 1990, 1985, 1982, 1977, 1971, 1966, 1962, 1958, 1953, 1949, 1944, 1940, 1930, 1925, 1920, 1915, 1910

2012, 2007, 2006, 2000, 1993, 1990, 1985, 1982, 1977, 1971, 1966, 1962, 1958, 1953, 1944, 1940, 1935, 1930, 1925, 1920, 1915, 1910

FINDINGS

Address Researched

500 Geneva Ave

505 GENEVA AVE

509 GENEVA AVE

535 GENEVA AVE

Address Not Identified in Research Source

2012, 2007, 2006, 2000, 1993, 1990, 1985, 1982, 1977, 1971, 1966, 1962, 1958, 1953, 1949, 1944, 1940, 1935, 1930, 1925, 1920, 1915, 1910

2012, 2007, 2006, 1993, 1982, 1977, 1971, 1966, 1962, 1958, 1953, 1949, 1944, 1940, 1935, 1930, 1925, 1920, 1915, 1910


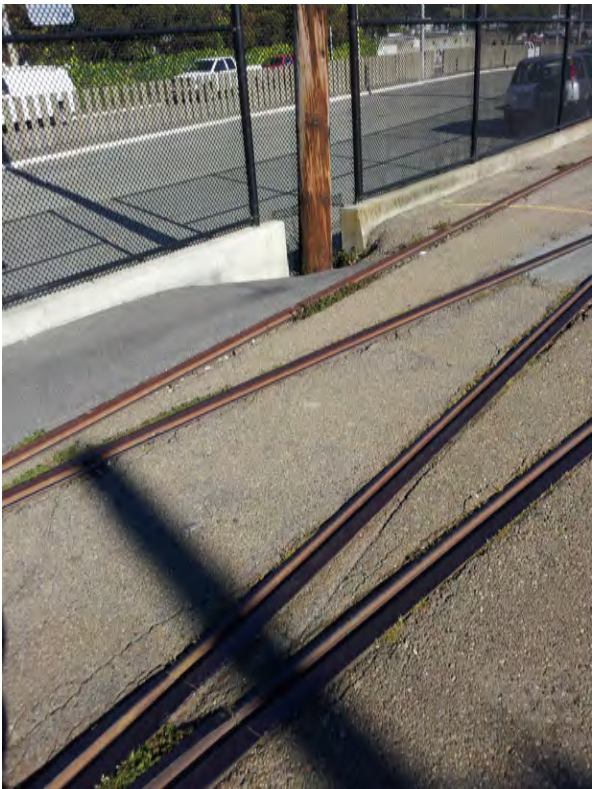
2012, 2007, 2006, 2000, 1993, 1990, 1985, 1982, 1977, 1971, 1966, 1944, 1925, 1920, 1915, 1910



2012, 2007, 2006, 2000, 1993, 1990, 1985, 1982, 1977, 1971, 1966, 1930, 1925, 1920, 1915, 1910







APPENDIX D

Site Photographs, February 26, 2013



Client: Asian Neighborhood Design		Project: SFMOH	
Name: Muni Upper Yard		Site Location: San Francisco, California	
Photograph ID: 1			
Photo Location: Muni Upper Yard			
Direction: North			
Survey Date: 02/26/2013			
Comments: View of subject property from south end looking north Note: Pavement with railtracks and overhead power cables			
Photograph ID: 2			
Photo Location: Muni Upper Yard			
Direction: Northwest			
Survey Date: 02/26/2013			
Comments: Dip in pavement and gap in the concrete berm to allow stormwater runoff to drain off the property, west property perimeter. Note: BART's Kiss-&-Ride area in background			

Client: Asian Neighborhood Design		Project: SFMOH
Name: Muni Upper Yard		Site Location: San Francisco, California
Photograph ID: 3		
Photo Location: Muni Upper Yard		
Direction: North		
Survey Date: 02/26/2013		
Comments: Train block at end of railtrack, NE end of the subject property Note: Geneva Avenue and Muni's Green Annex and Balboa Park BART Station in background		
Photograph ID: 4		
Photo Location: Muni Upper Yard		
Direction: Southwest		
Survey Date: 02/26/2013		
Comments: Train blocks on railtrack at NE end of the subject property. Note: BART's Kiss-&-Ride area and Balboa Park Station beyond the property fence in background		

Client: Asian Neighborhood Design		Project:	SFMOH
Name: Muni Upper Yard		Site Location:	San Francisco, California
Photograph ID: 5			
Photo Location: Muni Upper Yard			
Direction: Northeast			
Survey Date: 02/26/2013			
Comments: Storm drain catch basin at NE corner of subject property with the intersection of Geneva Avenue and San Jose Avenue in background			
Photograph ID: 6			
Photo Location: Muni Upper Yard			
Direction: Southwest			
Survey Date: 02/26/2013			
Comments: Car parking with railtracks and overhead power cables.			

Client: Asian Neighborhood Design		Project: SFMOH
Name: Muni Upper Yard		Site Location: San Francisco, California
Photograph ID: 7		
Photo Location: Muni Upper Yard		
Direction: West		
Survey Date: 02/26/2013		
Comments: Pedestrian access gate at north end of the subject property. Note: BART's Kiss-&-Ride and Balboa Park Station in background		
Photograph ID: 8		
Photo Location: Muni Upper Yard		
Direction: Southwest		
Survey Date: 02/26/2013		
Comments: View of parked cars along west perimeter fence		

Client: Asian Neighborhood Design		Project: SFMOH	
Name: Muni Upper Yard		Site Location: San Francisco, California	
Photograph ID: 9			
Photo Location: Muni Upper Yard			
Direction: North			
Survey Date: 02/26/2013			
Comments: Concrete berm along base of east perimeter fence near south end of subject property			
Photograph ID: 10			
Photo Location: Muni Upper Yard			
Direction: North			
Survey Date: 02/26/2013			
Comments: View of vehicle entrance at south end of the subject property. Note: Railtracks and overhead power lines extend into the subject property from San Jose Avenue			

Client: Asian Neighborhood Design		Project:	SFMOH
Name: Muni Upper Yard		Site Location:	San Francisco, California
Photograph ID: 11			
Photo Location: San Jose Avenue			
Direction: West			
Survey Date: 02/26/2013			
Comments: Outlet of drainage pipe in concrete retaining wall in front of sidewalk, east perimeter of subject property at San Jose Avenue			
Photograph ID: 10			
Photo Location: San Jose Avenue			
Direction: Southwest			
Survey Date: 02/26/2013			
Comments: View of concrete retaining wall and perimeter fence along San Jose Avenue			



Phase I Site Assessment Report
Muni Upper Yard, San Francisco, California 94112

APPENDIX E

EDR Historical Topographic Map Report



Balboa Park Upper Yard

2344 San Jose Avenue

San Francisco, CA 94112

Inquiry Number: 3521878.4

February 18, 2013

EDR Historical Topographic Map Report

EDR Historical Topographic Map Report

Environmental Data Resources, Inc.s (EDR) Historical Topographic Map Report is designed to assist professionals in evaluating potential liability on a target property resulting from past activities. EDRs Historical Topographic Map Report includes a search of a collection of public and private color historical topographic maps, dating back to the early 1900s.

Thank you for your business.
Please contact EDR at 1-800-352-0050
with any questions or comments.

Disclaimer - Copyright and Trademark Notice

This Report contains certain information obtained from a variety of public and other sources reasonably available to Environmental Data Resources, Inc. It cannot be concluded from this Report that coverage information for the target and surrounding properties does not exist from other sources. **NO WARRANTY EXPRESSED OR IMPLIED, IS MADE WHATSOEVER IN CONNECTION WITH THIS REPORT. ENVIRONMENTAL DATA RESOURCES, INC. SPECIFICALLY DISCLAIMS THE MAKING OF ANY SUCH WARRANTIES, INCLUDING WITHOUT LIMITATION, MERCHANTABILITY OR FITNESS FOR A PARTICULAR USE OR PURPOSE. ALL RISK IS ASSUMED BY THE USER. IN NO EVENT SHALL ENVIRONMENTAL DATA RESOURCES, INC. BE LIABLE TO ANYONE, WHETHER ARISING OUT OF ERRORS OR OMISSIONS, NEGLIGENCE, ACCIDENT OR ANY OTHER CAUSE, FOR ANY LOSS OF DAMAGE, INCLUDING, WITHOUT LIMITATION, SPECIAL, INCIDENTAL, CONSEQUENTIAL, OR EXEMPLARY DAMAGES. ANY LIABILITY ON THE PART OF ENVIRONMENTAL DATA RESOURCES, INC. IS STRICTLY LIMITED TO A REFUND OF THE AMOUNT PAID FOR THIS REPORT.** Purchaser accepts this Report AS IS. Any analyses, estimates, ratings, environmental risk levels or risk codes provided in this Report are provided for illustrative purposes only, and are not intended to provide, nor should they be interpreted as providing any facts regarding, or prediction or forecast of, any environmental risk for any property. Only a Phase I Environmental Site Assessment performed by an environmental professional can provide information regarding the environmental risk for any property. Additionally, the information provided in this Report is not to be construed as legal advice.

Copyright 2013 by Environmental Data Resources, Inc. All rights reserved. Reproduction in any media or format, in whole or in part, of any report or map of Environmental Data Resources, Inc., or its affiliates, is prohibited without prior written permission.

EDR and its logos (including Sanborn and Sanborn Map) are trademarks of Environmental Data Resources, Inc. or its affiliates. All other trademarks used herein are the property of their respective owners.

Historical Topographic Map



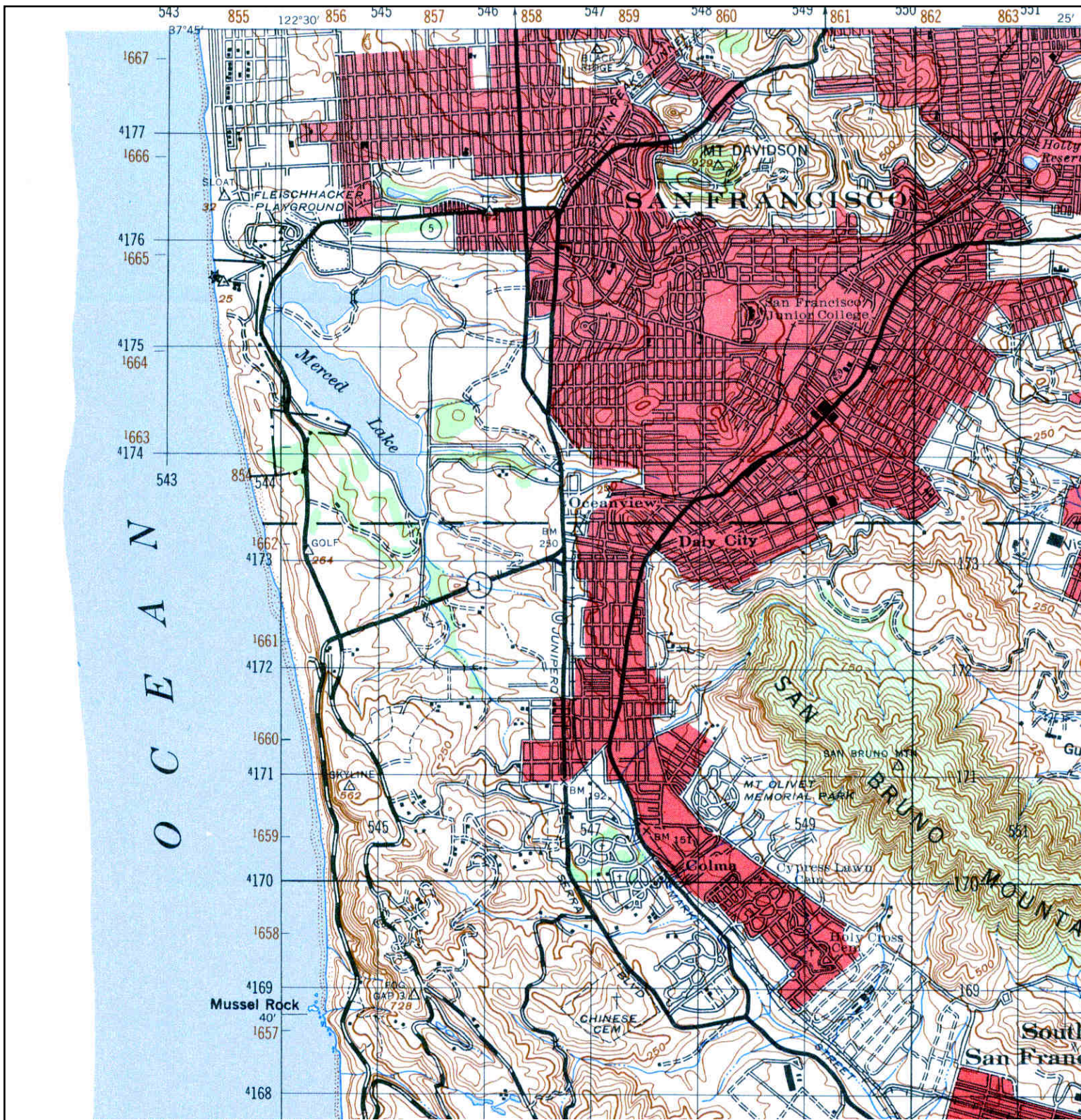
	TARGET QUAD NAME: SAN MATEO MAP YEAR: 1899	SITE NAME: Balboa Park Upper Yard ADDRESS: 2344 San Jose Avenue San Francisco, CA 94112 LAT/LONG: 37.7204 / -122.4472	CLIENT: LEE Incorporated ENVIRONMENTAL CONTACT: Paul Studemeister INQUIRY#: 3521878.4 RESEARCH DATE: 02/18/2013
	SERIES: 15 SCALE: 1:62500		

Historical Topographic Map



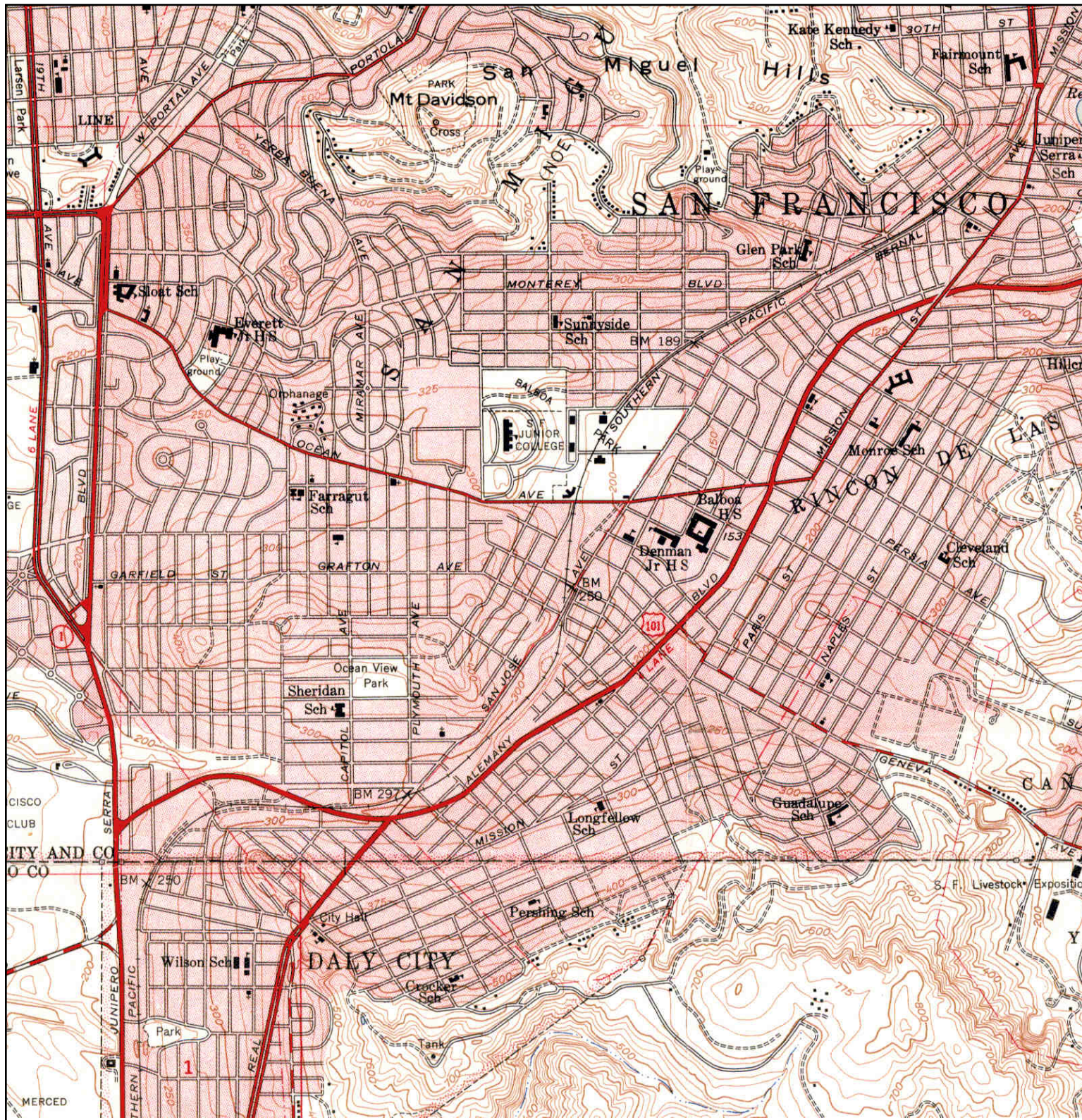
	TARGET QUAD	SITE NAME: Balboa Park Upper Yard	CLIENT: LEE Incorporated	
	NAME: SAN MATEO	ADDRESS: 2344 San Jose Avenue	CONTACT: Paul Studemeister	
	MAP YEAR: 1915	LAT/LONG: 37.7204 / -122.4472	INQUIRY#: 3521878.4	RESEARCH DATE: 02/18/2013
	SERIES: 15			
	SCALE: 1:62500			

Historical Topographic Map



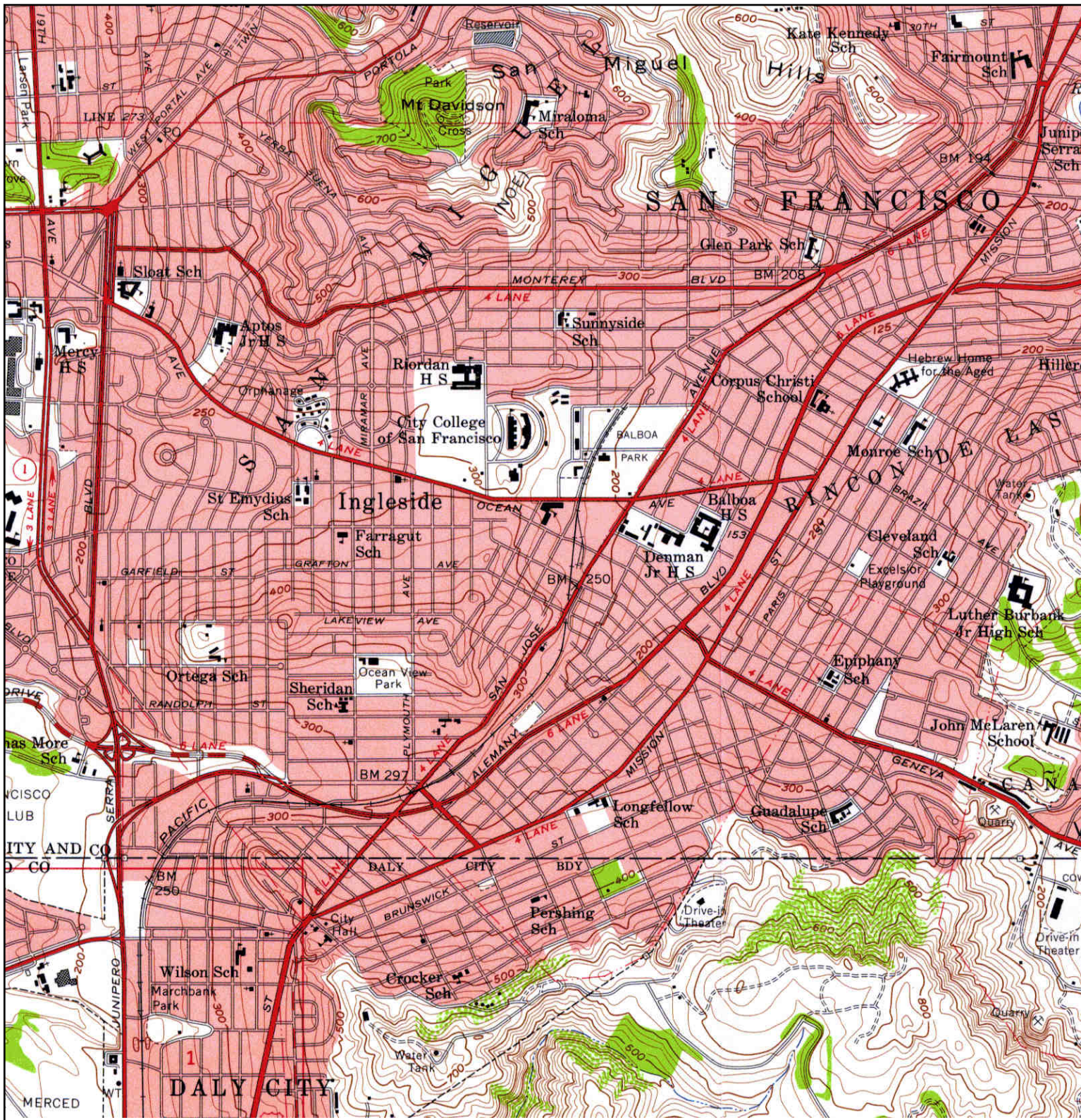
<p>N ↑</p>	<p>TARGET QUAD NAME: SAN MATEO MAP YEAR: 1947</p>	<p>SITE NAME: Balboa Park Upper Yard ADDRESS: 2344 San Jose Avenue San Francisco, CA 94112 LAT/LONG: 37.7204 / -122.4472</p>	<p>CLIENT: LEE Incorporated CONTACT: Paul Studemeister INQUIRY#: 3521878.4 RESEARCH DATE: 02/18/2013</p>
	<p>SERIES: 15 SCALE: 1:50000</p>		

Historical Topographic Map



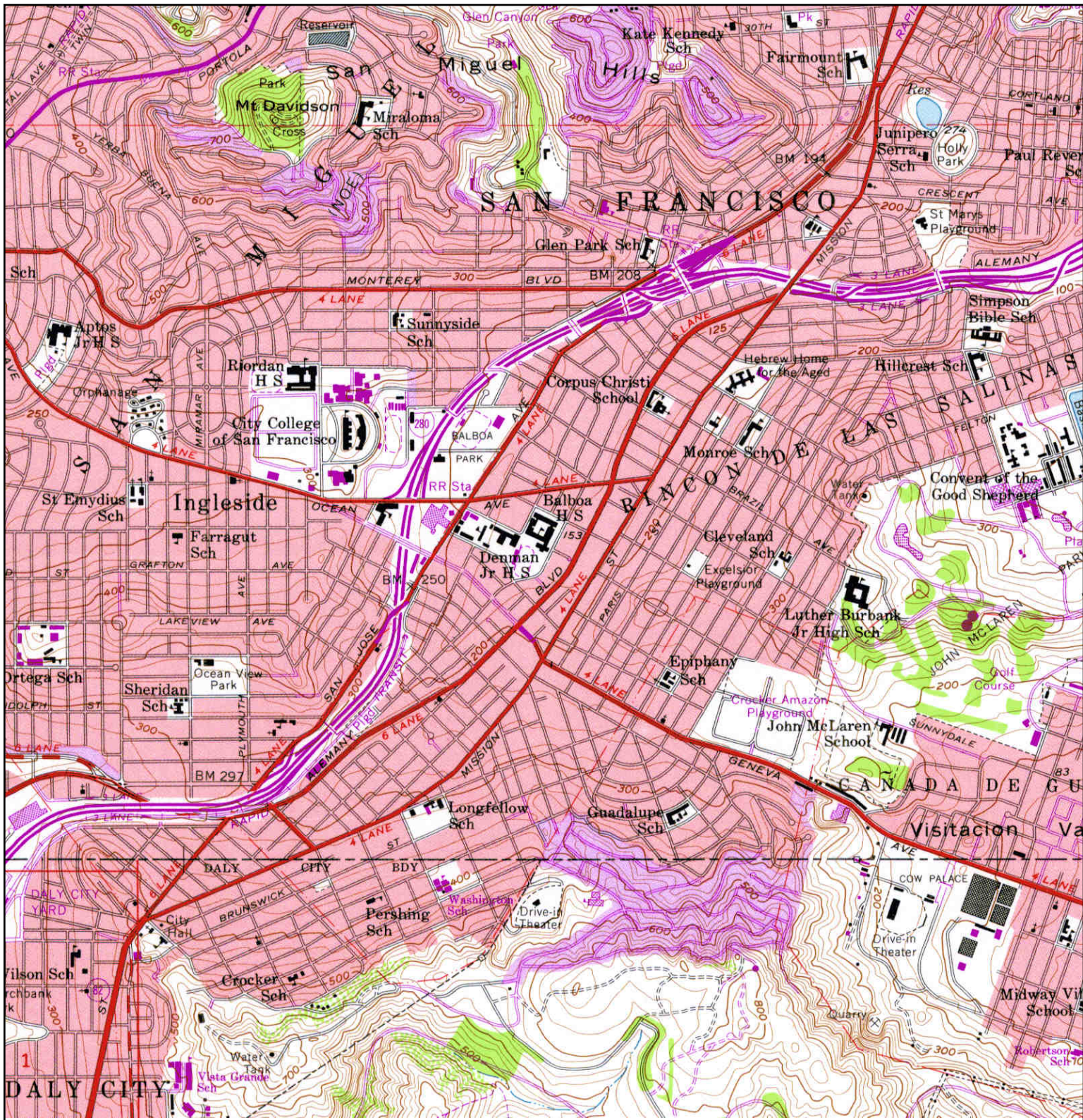
	TARGET QUAD	SITE NAME: Balboa Park Upper Yard	CLIENT: LEE Incorporated
	NAME: SAN FRANCISCO SOUTH	ADDRESS: 2344 San Jose Avenue San Francisco, CA 94112	CONTACT: Paul Studemeister
	MAP YEAR: 1950	LAT/LONG: 37.7204 / -122.4472	INQUIRY#: 3521878.4
	SERIES: 7.5		RESEARCH DATE: 02/18/2013
	SCALE: 1:24000		

Historical Topographic Map



<p>N</p>	<p>TARGET QUAD</p> <p>NAME: SAN FRANCISCO SOUTH</p> <p>MAP YEAR: 1956</p>	<p>SITE NAME: Balboa Park Upper Yard</p> <p>ADDRESS: 2344 San Jose Avenue San Francisco, CA 94112</p> <p>LAT/LONG: 37.7204 / -122.4472</p>	<p>CLIENT: LEE Incorporated</p> <p>CONTACT: Paul Studemeister</p> <p>INQUIRY#: 3521878.4</p> <p>RESEARCH DATE: 02/18/2013</p>
	<p>SERIES: 7.5</p> <p>SCALE: 1:24000</p>		

Historical Topographic Map



<p>N ↑</p>	<p>TARGET QUAD</p>	<p>SITE NAME: Balboa Park Upper Yard</p>	<p>CLIENT: LEE Incorporated</p>
	<p>NAME: SAN FRANCISCO SOUTH</p>	<p>ADDRESS: 2344 San Jose Avenue San Francisco, CA 94112</p>	<p>CONTACT: Paul Studemeister</p>
	<p>MAP YEAR: 1973</p>	<p>LAT/LONG: 37.7204 / -122.4472</p>	<p>INQUIRY#: 3521878.4</p>
	<p>PHOTOREVISED FROM : 1956</p>		<p>RESEARCH DATE: 02/18/2013</p>
	<p>SERIES: 7.5</p>		
	<p>SCALE: 1:24000</p>		